

(Cavaradossi dipinge con rapidità, soffermandosi spesso a riguar-
 (He begins to paint rapidly, often pausing to look at his own work,

AND.^{te} LENTO $\text{♩} = 48$

- lo - ri!
 17 colours!

AND.^{te} LENTO $\text{♩} = 48$

p *p*

dare il proprio lavoro, mentre il Sagrestano va e viene, poi riprende i pennelli che lava in una ca-
 while the Sacristan fidgets backwards and forwards, eventually picking up the brushes and dab-

pp

tinella ai piedi dell'impalcato)

(Cavaradossi ristà dal dipingere: leva di ta-
 bling them in a bucket at the foot of the scaffolding) (Cav. suddenly stops painting, takes out of

pp

sca un medaglione contenente una miniatura e gli occhi suoi vanno dal medaglione al quadro)
 his breast-pocket a medallion containing a miniature, and compares the latter with the picture on the

CAVAR.

pp easel)

Re - Strange

18

PIÙ LENTO

CAV. *con-di-ta ar-mo-ni-a di bel-lez-ze di-ver-sel...
har-mo-ny of con-trasts thus de-li-ciously blend-ing!...*

*PIÙ LENTO
dolciss.*

pp

f

CAV. *E bru-na, Flo-ri-a, l'ar-den-te a-man-te
My Flo-ria's dus-ky glow with peach-like bloom con-*

Sostenendo

pp *rall:.....*

Sostenendo

pp *rall:.....*

CAV. *mi-a, e
-tend-ing, Thou*

(a mezza voce come brontolando)

SAGR. *(grumbling under his breath)*

SAC. *pp*

*(s'allontana per prendere l'acqua onde pulire i pennelli)
(He fetches water wherewith to cleanse the brushes)*

*(Scherza ooi fanti e la-scia sta-re i san-ti...
(He scorns the saints and jests with the un-god-ly...)*

a tempo

m.d.

p

Ed.

CAV.

te bel - ta - - de i - - gno - - ta,.....
fuir - est Queen of Heav - - en,

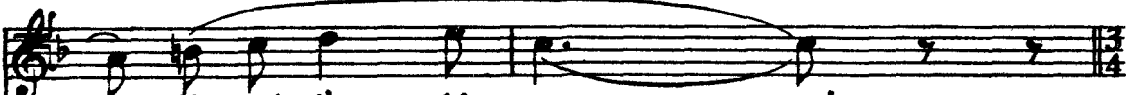
pp

CAV.

..... cin - ta di chio - me bion - - de!...
Gold are thy tres - ses and ra - diant - ly bright! Thine

CAV.

Tu az - zur - ro hai l'oc - - chio.....
eyes are blue and Tos - - ca's

CAV. 

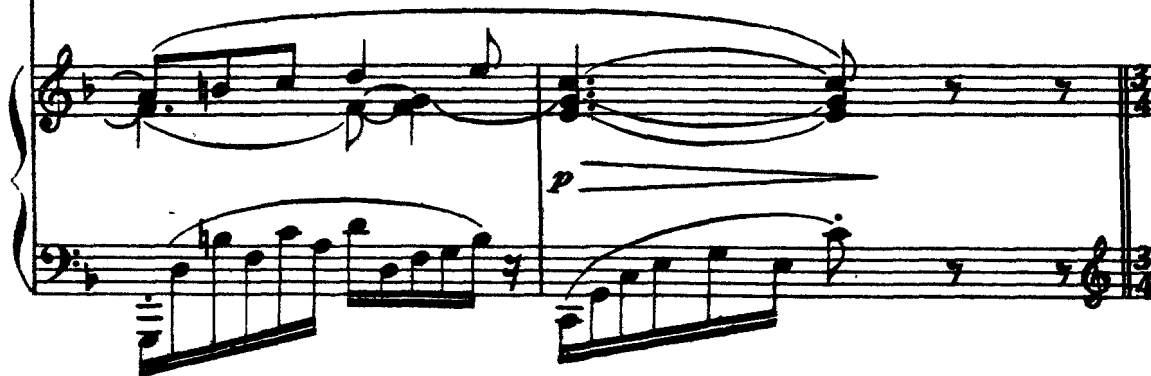
To-sca ha l'oc - chio ne - - - ro!
dark as a moon - less night.....

(ritornando dal fondo e sempre scandolezzato dice:)


SAGR. (*returns up the stage, murmuring:*)

SAC.

Scherza coi fan-ti e la-scia stare!
He scorns the saints and jests with the un-

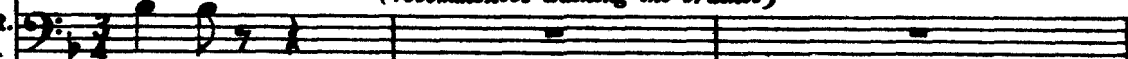


LO STESSO MOV.^{to}

CAV.  L'ar-te nel suo mi - ste - - ro le di -
Art, that po - tent ma - gi - - cian many

(riprende a lavare i pennelli)

(recommences washing the brushes)

SAGR. 

SAC.

san - ti!
 - god - ly!

LO STESSO MOV.^{to}

19 

rall:.....

CAV. 
 - ver - se bel - lez - ze in - siem con - fon - de: ma
beauties combines in one i - de - al: To

SAGR. 
 SAC. 

 *col canto*

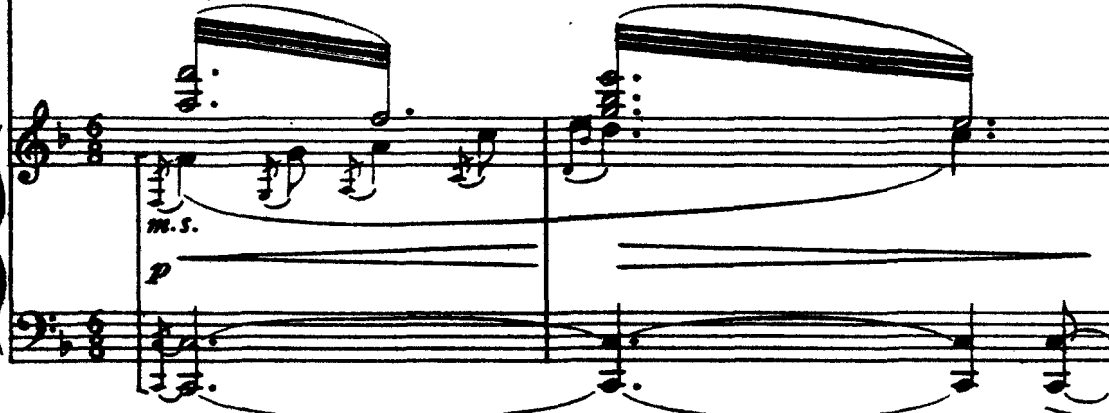
1.^o TEMPO

CAV. 
 nel ri - trar co - ste - - - - i....
me, be - lov - ed Tos - - - - ca....

SAGR.  *Opp.* 
 SAC. 

Que - ste di - ver - se gon - ne
These light - o' - loves per - ni - cious

1.^o TEMPO

 *m.s.*
p

CAV.
 il mio so - lo pen - - sie - - ro,
 when I limn thy bright vi - - sage,

SAGR.
 SAC.
 che fan - no con - cor - ren - za al - le Madon - ne mandan
 So fri - vo - lously vicious Delight in willing hu - man

CAV.
 ah! il mio sol pen - - sier sei tu! To - - sca sei
 Thou a - lone, a - - lone art real! Thou a - lone art

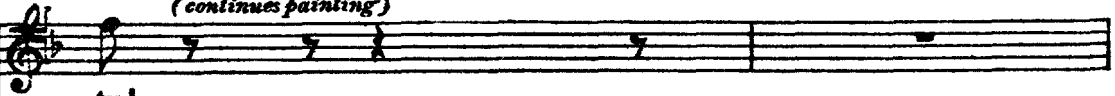
SAGR.
 SAC.
 tan - fo d'infer - no.
 souls to per - di - tion.

allarg.
rit.....

allarg. col canto

(continua a dipingere)
(continues painting)

CAV.



tu!

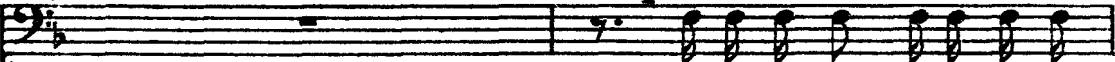
real! (asciuga i pennelli lavati, non senza continuare a borbottare)
(dries the cleaned brushes, and goes on muttering)

SAGR.
SAC.

Scherza coi fan-ti e la-scia sta-re i san - ti.
He scoffs at saints and jests with the un - god - ly.

Piano accompaniment for the first system, featuring a grand staff with treble and bass clefs. The right hand has a melodic line with a *dolciss.* marking and a *ppp* dynamic. The left hand has a bass line with a *p* dynamic. There are some rhythmic markings (7, 7) and a star symbol at the end of the system.

Piano accompaniment for the second system, featuring a grand staff with treble and bass clefs. The right hand has a melodic line with arched notes. The left hand has a bass line with arched notes.

SAGR.
SAC.*p cres.*

Ma con quei ca - ni di vol-ter -
And they, like hea - thenish un - be -

Piano accompaniment for the third system, featuring a grand staff with treble and bass clefs. The right hand has a melodic line with arched notes. The left hand has a bass line with arched notes. There is a *cres.* marking.