

ALDROVADINI

CESAREIN ALBESND

R. Conservatorio
di Musica-Napoli
BIBLIOTECA

Rari
6.
6. 10.
d' inventario



N



BIBLIOTECA DEL R. CONSERVATORIO

DI MUSICA DI NAPOLI

Sala *Rari* 33-6-11

Scaffale *II 6* Pluteo *6*

N. di Scaffale (Volume) *II 10*

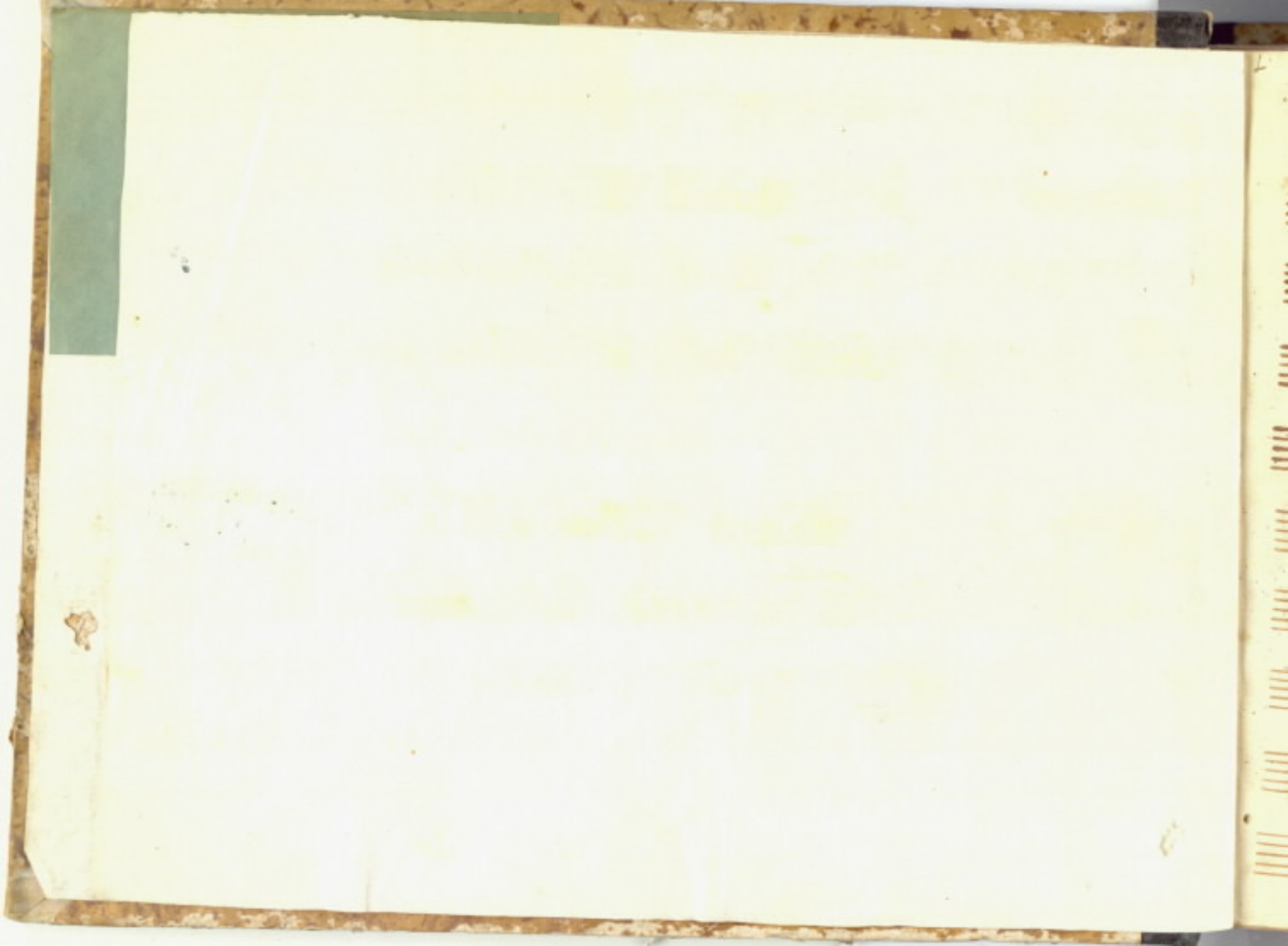
N. dei Manoscritti in copia

N. di biblioteca

quest' opera è stata regalata all' Archivio del Real
Collegio da S. E. il Sig. Duca di Paja Governatore

Napoli 14. Novemb. 1737

Francesco Florino Archivario





Opera Intitulata //

Cesare in Alexandria //

Poesia del sig. ^{Fran. Maria} Abbate paglia //

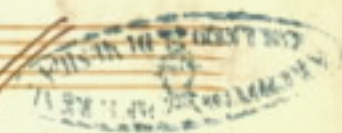
musica del sig. //

Giuseppe Morrandini //

fatta nell' anno //

1700

In Napoli nel Teatro di S. Bartolomeo



Handwritten musical score on four staves. The first staff begins with a treble clef and a common time signature (C). The second staff is labeled *Sinf.^{da} avanti l'opera* and also starts with a treble clef and common time. The third staff uses a bass clef, and the fourth staff uses a tenor clef. The notation includes various rhythmic values and rests.

Handwritten musical score on four staves. The first two staves begin with a treble clef and a common time signature (C). The third staff uses a bass clef, and the fourth staff uses a tenor clef. The notation includes various rhythmic values and rests.

Handwritten musical notation on four staves. The first staff is in treble clef and contains dense, repetitive rhythmic patterns. The second staff is also in treble clef and features similar patterns with some rests. The third staff is in bass clef and shows a more melodic line with some rests. The fourth staff is in bass clef and continues the melodic line. The notation is dense and characteristic of early manuscript notation.

Handwritten musical notation on four staves. The first staff is in treble clef and contains dense, repetitive rhythmic patterns. The second staff is also in treble clef and features similar patterns with some rests. The third staff is in bass clef and shows a more melodic line with some rests. The fourth staff is in bass clef and continues the melodic line. The notation is dense and characteristic of early manuscript notation.

Handwritten musical notation on four staves. The notation is dense and includes various rhythmic values and accidentals. The first staff begins with a treble clef and a common time signature. The second and third staves also use treble clefs. The fourth staff uses a bass clef. The notation is characteristic of early printed music.



Handwritten musical notation on four staves. The notation is dense and includes various rhythmic values and accidentals. The first staff begins with a treble clef and a common time signature. The second and third staves also use treble clefs. The fourth staff uses a bass clef. The notation is characteristic of early printed music.



Handwritten musical score for the first system, consisting of four staves. The top two staves are in treble clef, and the bottom two are in bass clef. The notation is dense with many beamed notes and rests.



Handwritten musical score for the second system, consisting of four staves. The top two staves are in treble clef, and the bottom two are in bass clef. The notation includes dynamic markings *Adagio* and *Presto* and time signature changes to 12/8.



Handwritten musical notation on four staves. The first two staves are in treble clef, and the last two are in bass clef. The notation consists of various rhythmic symbols, including vertical stems with flags and horizontal lines, typical of early manuscript notation. The first staff begins with a treble clef and a common time signature. The second staff also begins with a treble clef. The third and fourth staves begin with bass clefs. The notation is dense and fills most of the staves.

Handwritten musical notation on four staves. The first two staves are in treble clef, and the last two are in bass clef. The notation consists of various rhythmic symbols, including vertical stems with flags and horizontal lines, typical of early manuscript notation. The first staff begins with a treble clef and a common time signature. The second staff also begins with a treble clef. The third and fourth staves begin with bass clefs. The notation is dense and fills most of the staves.

Handwritten musical score for the first system, consisting of four staves. The notation includes various note values, rests, and bar lines, typical of 18th-century manuscript notation.



Handwritten musical score for the second system, consisting of four staves. The notation continues from the first system. The final staff includes the handwritten text "fine detta simf." written above the notes.





Atto P.^{mo} scena Prima

Campagna d' Alexandria co' veduta del Nilo, e Città

in lontananza. Nullo Cesare che riposa in un

Padiglione co' esercito numero so che dorme.

Cesare neghittoso e dormi ancora

forse Pompeo superbo di già posse in oblio le far-

salle sconfitte nei capi di tessaglia de le tue schiere in-

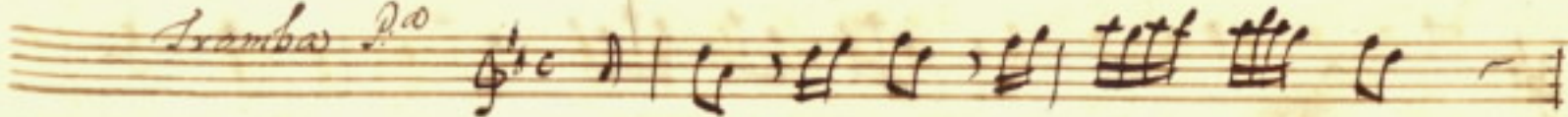
ultra l'armi co' gl'ozii suoi fida à battaglia già de' suoi fiori a-

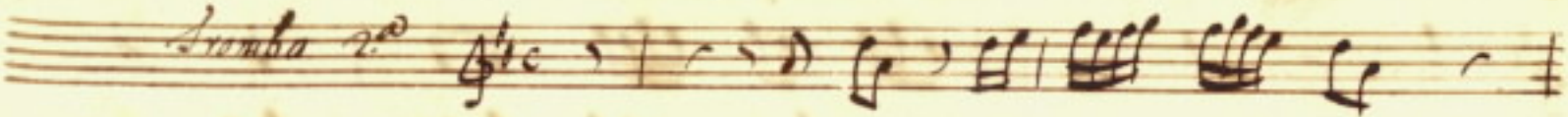
dorna spunta nel ciel l'aurore Cesare neghit-

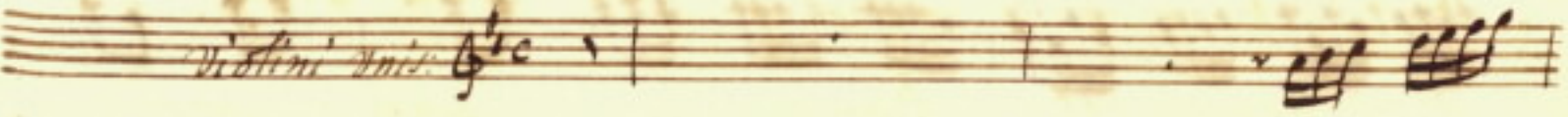
toso è dormi ancora su del gran fuggitivo

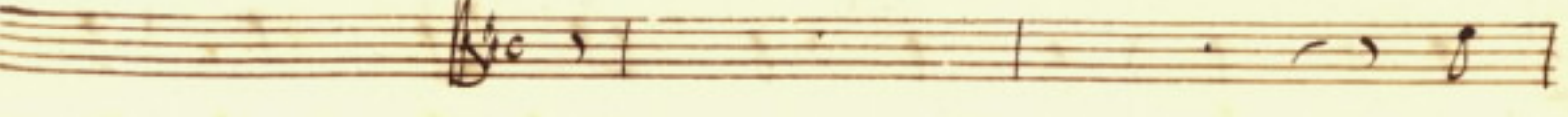
si rintraccino l'orme della mia spada al tempo l'orgo-

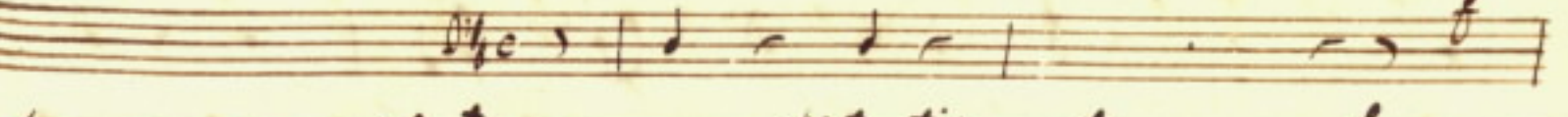
glioso nemico atterrito sarà si deiti il campo

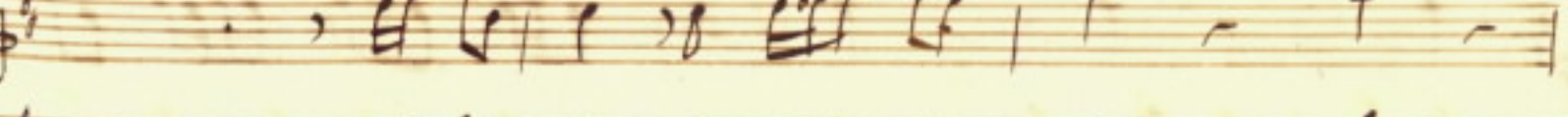
Tromba 1^o 

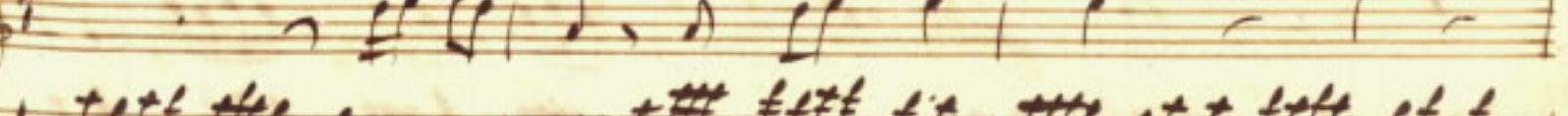
Tromba 2^o 


Violini' 1ⁿⁱ 

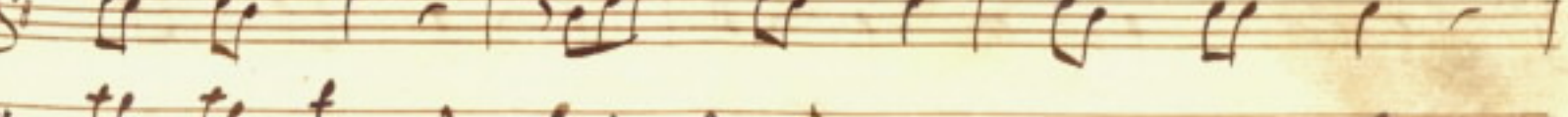


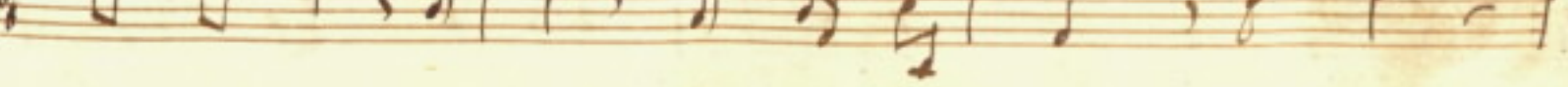












A page of handwritten musical notation on ten staves. The notation is written in brown ink on aged, yellowish paper. The first five staves are grouped together, and the last five are grouped together. Each group contains a treble clef staff, a bass clef staff, and a lute clef staff. The music consists of rhythmic patterns and melodic lines, with some staves featuring dense, multi-measure rests or complex rhythmic figures. The notation includes various note values, rests, and clefs.

Trombe

Violini

Violoncelli

Organo

All' armi alle straggi

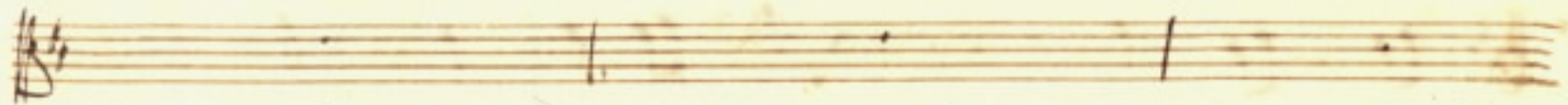
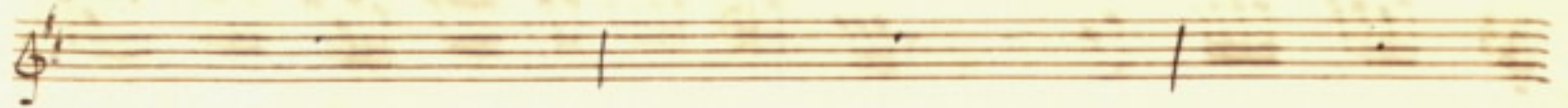
all' armi alle straggi

All' armi alle

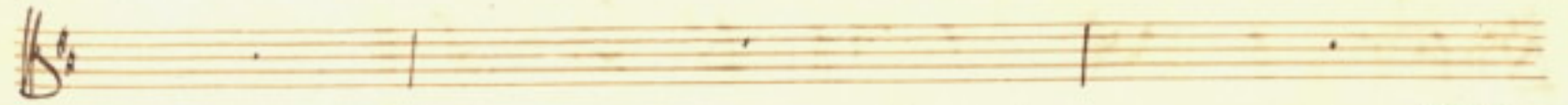
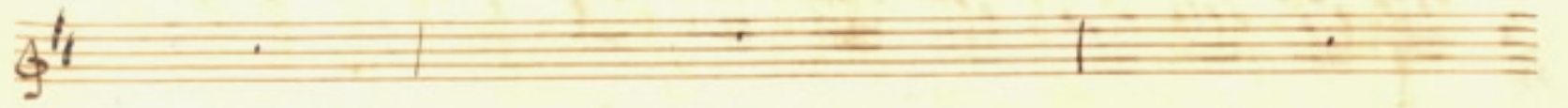
strag *gi alle strag-*

gi all' armi alle straggi

Handwritten musical score on ten staves. The notation includes various rhythmic values, accidentals, and dynamic markings. The bottom staff contains the lyrics "di cesare il core".



che pien di ualore sò uaghe le piaghe ri-



posi i risag=gi son uaghe le pia- ghe ri-

posi i disag- gi *Dà capo*

Entra un Capitano e parla piano, à Cesare

Dà sé

viene Achilla quel duce ch'ha nell'egitto il general cor

al capitano

mando uenga Achilla e mi renda ragion come il suo

Regge mio tributario è amico habbia dato le-

Scena seconda Achilla
sili a' mio nemico
cōsequito d'egittu, è detto

Cesare al cui gran nome le Prouincie se-

^{Ces.}
moto è ardisci ancora di Cesare all'aspetto temerario auan-

garsi al tuo signore torna è digli che in breue d'Al-

Sandri le spoglia rinfacciar gli sapranno che Pompeo è mio ne-

mico ed' ei l'accoglie signor se ti com-

piaci d'accoltar mi u momento uedrai ch'hauerlo ac-

costo offenderti no' può sorgi et of-

costo quando le tue falangi uinsero la bat-

taglia fuggi Pompeo chiedendo l'ajilo al mi si-

gnose ei che sepre nel core tenne il tuo nome è

la tua gloria impressa il vinto assicu- ro nave re-

ale spiegò le vele ad incan- tarlo ò in

quella del uiver suo fu l'ultima procella si som

Ach:
 merse no' già d'armata schierafu nafitto e xe =

Leg:
 ciso l'empia testa vedrai da me lontano spet =

Ach:
 tacolo si acerbo e resta in tanto per tua

gloria e sua pena a cada uere esangue uili =

Leg:
 peso e insepolto in sa l'arene trouax uiuo il me =

mico poterlo epugnar sarei contento ch'agl'e-

roi di tal sorte no si toglie la vita a tradi-

mento tanta ferezza il Re d'egitto an-

nida ma no rimanga inulta l'ombra della grand'

alma Cesare piange e solo meo no rida

Vnisi

All.^o

Handwritten musical notation for the first system. It consists of three staves. The top staff is for Violin I (Vnisi), the middle for Violin II (Vnii), and the bottom for Cello/Double Bass (Vcllo/Bass). The notation includes various rhythmic values and chordal structures.

Handwritten musical notation for the second system. It consists of three staves. The top staff is for Violin I, the middle for Violin II, and the bottom for Cello/Double Bass. Below the bottom staff, the lyrics are written in Italian: *spira fieri dell' alma guerrieri*.

Handwritten musical notation on three staves. The top staff is in treble clef with a key signature of two sharps (F# and C#). The middle staff is in bass clef. The bottom staff is in bass clef and contains a series of rhythmic markings, possibly representing a basso continuo line.

Handwritten musical notation on three staves. The top staff is in treble clef. The middle staff is in bass clef. The bottom staff is in bass clef and contains the Italian lyrics: *uol perdesse una bella vittoria se il nemico di già u' man.*

Handwritten musical score for the first system. It consists of three staves. The top staff is in treble clef, the middle in alto clef, and the bottom in bass clef. The lyrics are written below the bottom staff.

io voi perdette una bella uitta

Handwritten musical score for the second system. It consists of three staves. The top staff is in treble clef, the middle in alto clef, and the bottom in bass clef. The lyrics are written below the bottom staff.

se il nemico di già vi mania uol per-

Handwritten musical score for the first system. It consists of three staves. The top staff is in treble clef, the middle in alto clef, and the bottom in bass clef. The lyrics are written below the bottom staff.

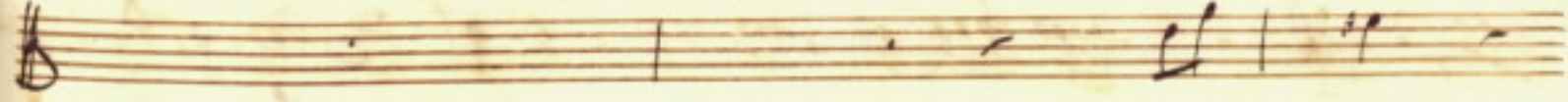
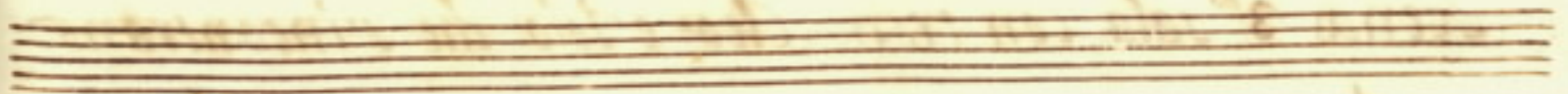
devo una bella uita — — — — — *ria seid me.*

Handwritten musical score for the second system. It consists of three staves. The top staff is in treble clef, the middle in alto clef, and the bottom in bass clef. The lyrics are written below the bottom staff.

mico di già u' manco — — — — — *ma nō*



manca d'egitto la gloria se nascono à bersaglio sexto un ber



sa glio à bersaglio sexto se na-



fino un bersaglio a bersaglio retto da Capo

Scena 3^o sala con trono Cleo: e Iolo: che s'incontrano

de: giunta sarà pur l'ora de la uendetta mia di qual uen: Id:

de: donna guarda che nò mi sbocchi l'ira del seno e tu mi'

Sol: *Al:*
 nacci ancora già è tempo *Sol:* lo son tradito *Al:* il mio cenno es-

Sol: *Al:*
 guito resti senza di mora *Sol:* chi mi soccorre *Al:* è tu mi-

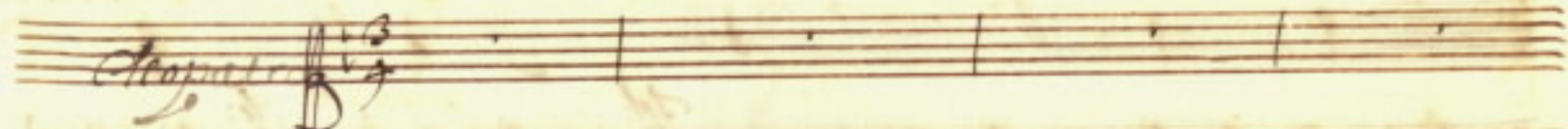
Sol:
 nacci ancora *Sol:* e uol d'apre catene per seguir d'una fiera i

barbari deliri il vostro Re cingete empj infami re-

belli e no' temete



Clarinete



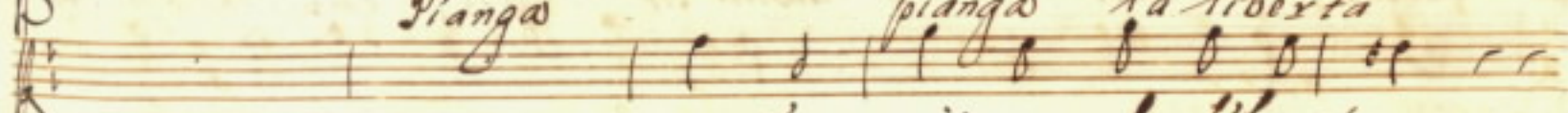
Soprano



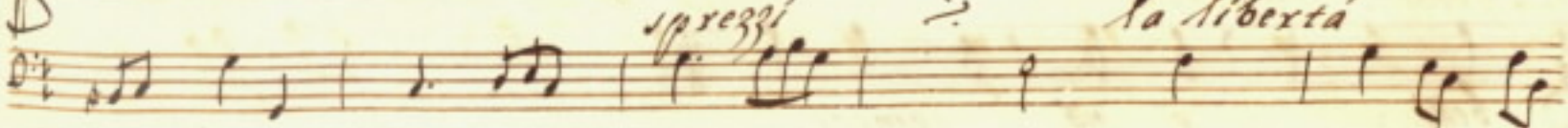
Violoncello

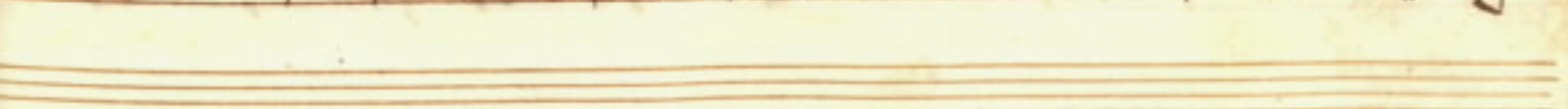
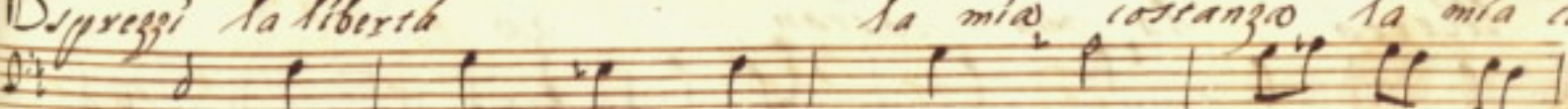
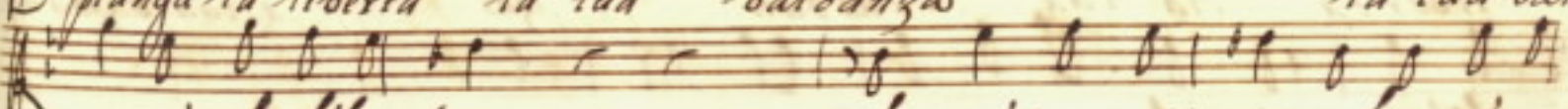
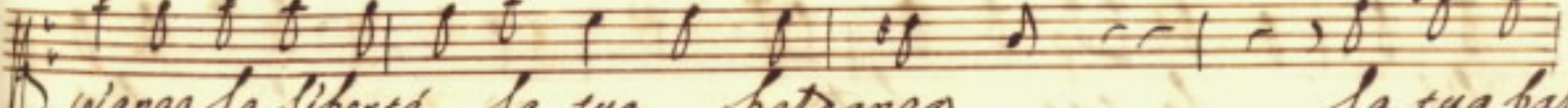
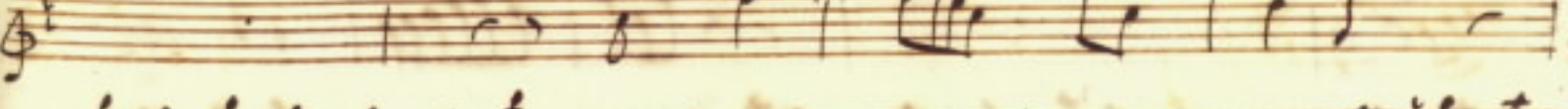
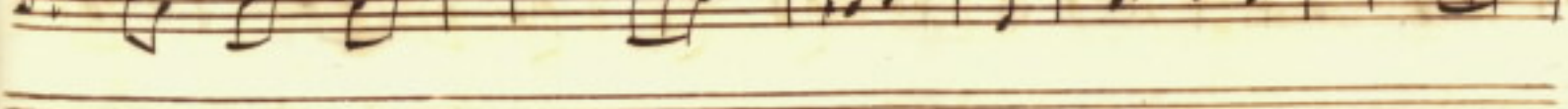
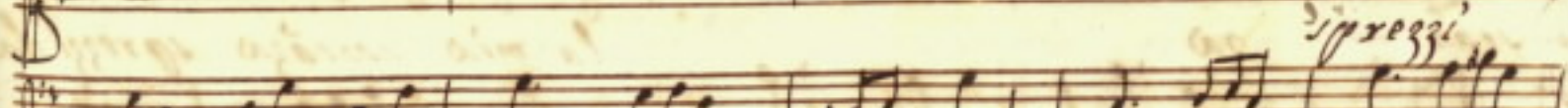
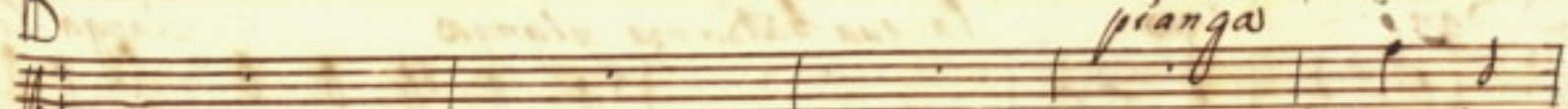


Pianga *pianga* *la liberta*



sprezzi *la liberta*





pianga

sprezzi

pianga la libertà la tua batdanza la tua bal-

sprezzi la libertà la mia costanza la mia cor-

dan - zo la tua batdanza pianga pianga la
 stan - zo la mia costaza sprezzila

libertá la tua batdan - zo la tua batdanza
 libertá la mia costan - zo

pianga pianga la liberta la tua batdan - zo
la mia costanza sprezzì la liberta la mia costan - zo

pianga la liberta la tua batdan - zo
sprezzì la liberta la mia costan - zo

setto

morte nò temo già la tua

This system contains two staves. The upper staff is a vocal line in G-clef with a treble clef and a key signature of one flat (F major/D minor). It begins with a complex rhythmic pattern of sixteenth and thirty-second notes. The lower staff is a basso continuo line in C-clef with a bass clef and a key signature of one flat. It contains a few notes, including a prominent '4' marking. The lyrics 'setto' and 'morte nò temo già la tua' are written in cursive below the vocal line.

sembian - za nò temo già la tua sembianza morte nò temo

This system contains two staves. The upper staff is a vocal line in G-clef with a treble clef and a key signature of one flat. It continues the melodic line from the first system. The lower staff is a basso continuo line in C-clef with a bass clef and a key signature of one flat. The lyrics 'sembian - za nò temo già la tua sembianza morte nò temo' are written in cursive below the vocal line.

Scena 9^a

Art: Art:

Argene, è
già la tua sembian

3^o detto

Art: De:
Solomeo prigionier chi lo difende mio ne-

Art: De:
mico sarà tépra o Reina Mira del cor tali Art:

bano è pensa ch'in questa Regia accolto con

Arg.
generoso invito fossi da Cleopatra i tuoi consigli ri-

serba à miglior uso alma ben nata à la pietá più al ri-

Alc.
gore inclina dell'egitto sol io son la Reina

Arg.
di rigida inclemenza o bella Cleopatra il core ar-

mato al suo nome famoso quanto oscura di preggio

Alc:

è già importuno quel zelo che interessa d'artabano se

Arz: *Arg:*

uoci Aulete impone ch'a Solomeo si sposi

Arz:

lere è morto se morto egli no fosse no po=

tria Cleopatra del soglio del egitto eser tiranna

Alc:

a te cedo lo scemo se il genitore giunta lagora ha

And:.
Sombro è il viver mio condanna è la legge del

And:. Regno *And:.* io la governo *And:.* ma di quest'odio interno non di-

Arg:. sai la ragione alma regnante non dà conto dell'

And:. opere ai numi almeno *And:.* habbian essi la cura delle

And:. cose celesti *And:.* è temer non li uoi *And:.* se mi parlano i

And.
 numi all'or risponderò ma non a voi Solomeo non t'of-

And. feje *And.* è mio crudo nemico *And.* o fiero or-

And. goglio *And.* è tuo sposo *And.* il rifiuto *And.* è fa-

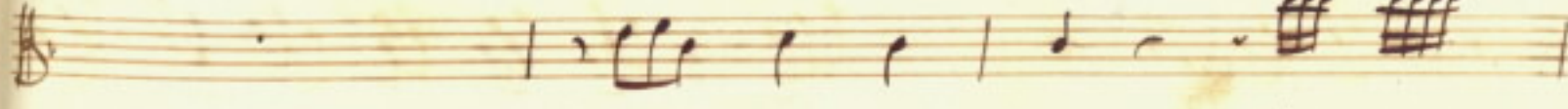
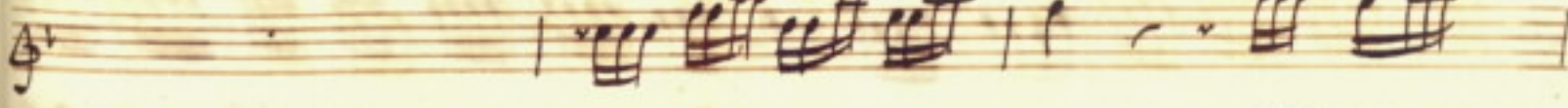
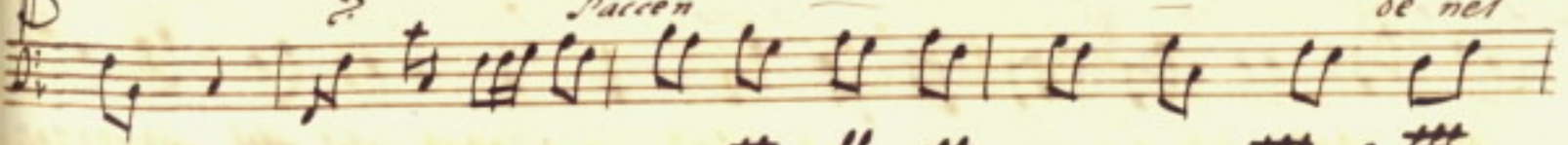
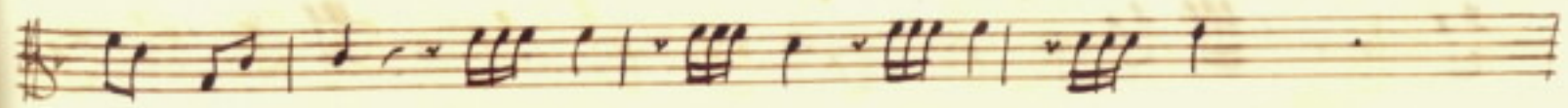
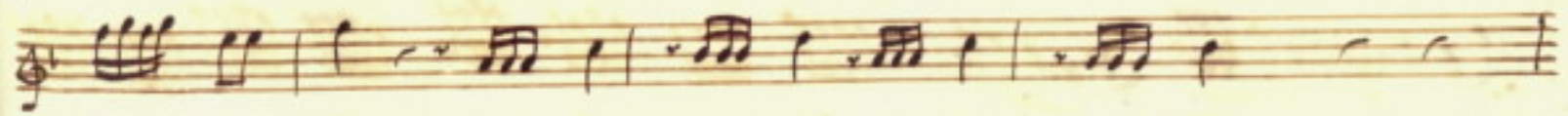
And. tel *And.* non conosco *And.* è Re *And.* non uoglio



Handwritten musical score on aged paper, featuring multiple staves of music. The notation includes treble and bass clefs, a common time signature (C), and various rhythmic values. The score is divided into several systems, with the lower systems containing dense, repetitive rhythmic patterns. A tempo marking, *Allegro*, is written in the first system. The final system includes the instruction *So degno il rigore* written above the staff.

Allegro

So degno il rigore

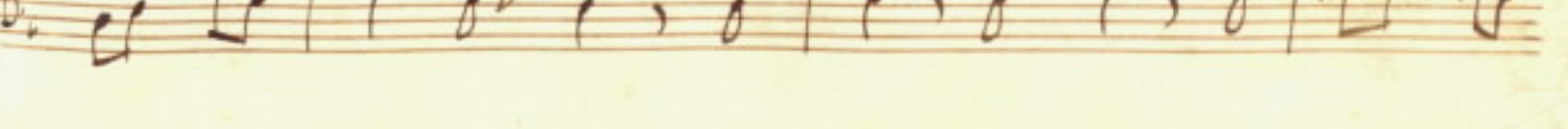
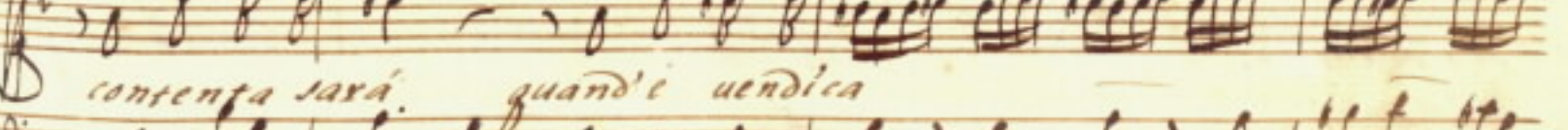
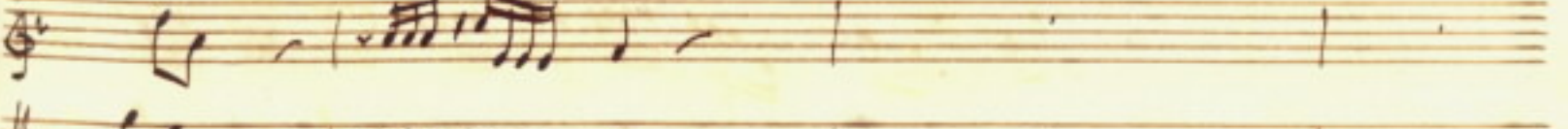
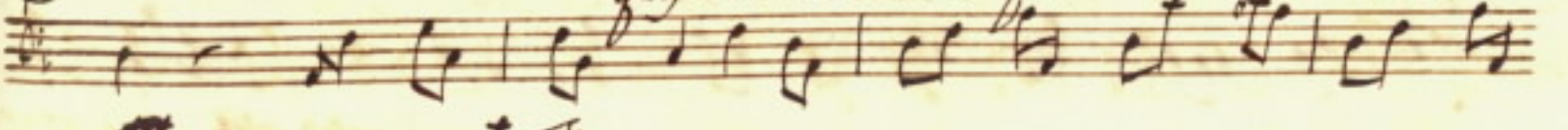
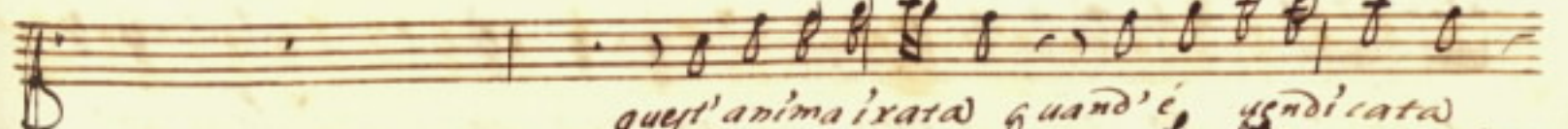
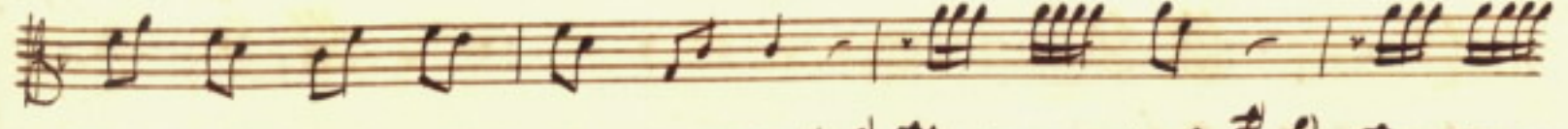
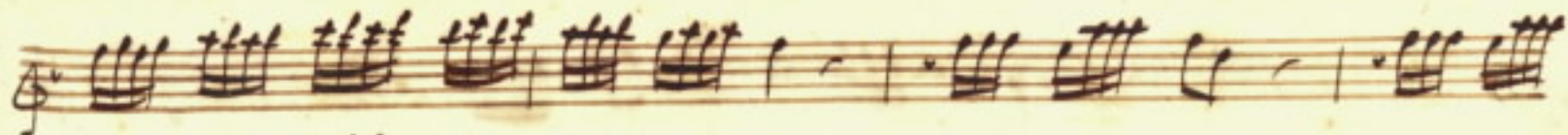


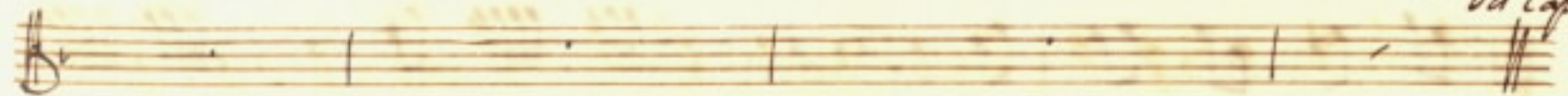
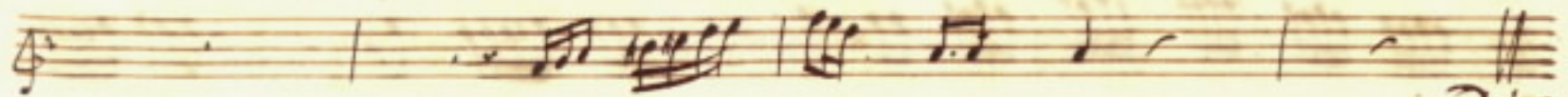
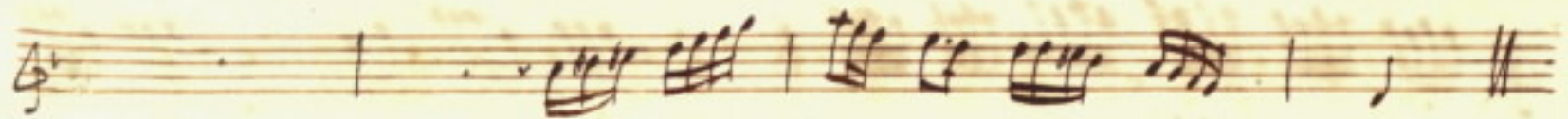
Three staves of handwritten musical notation. The top two staves use treble clefs, and the bottom staff uses a bass clef. The notation consists of rhythmic patterns and chordal structures, possibly for a keyboard instrument.

D'accende nel core no' sen - to no' no' sento plecta no' sen -

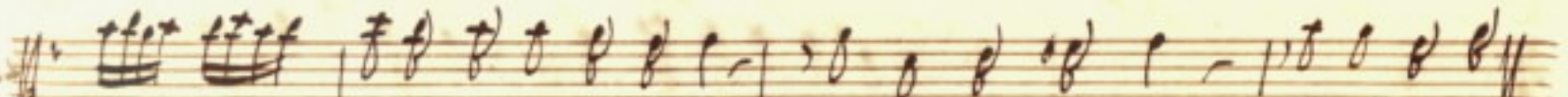
Three staves of handwritten musical notation. The top two staves use treble clefs, and the bottom staff uses a bass clef. The notation is dense with many notes, suggesting a complex texture or a specific performance technique.

to no' no' sento plecta

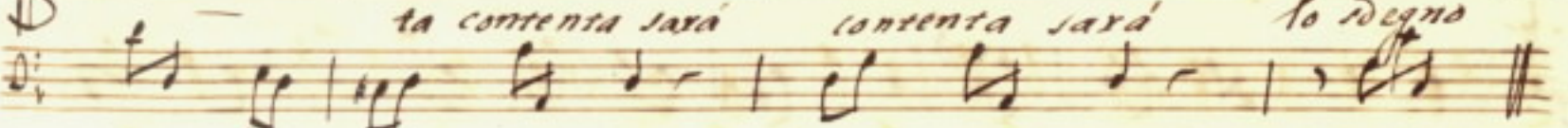




Da Capo



ta contenta sarà contenta sarà lo degno



And.

uà pur cruda inhumana forse uorrà noi numi

Die



sati di tanto orgoglio che tu sospiri una omera del soglio



Arg:

fino che vive argene regnera deoparra anzi ver-

ra' quell' ora ch'aura partene' voglio Argene ancora

Arg:

del era' giovanile todo il brio ma ripando fin che

vive artabano Regnera Solitico *Arg:* no' so' che spene di

dominar fa' noi t'regn' Argene

Handwritten musical notation on three staves. The first staff begins with a treble clef and a common time signature. The notation is dense, featuring many beamed notes and rests.

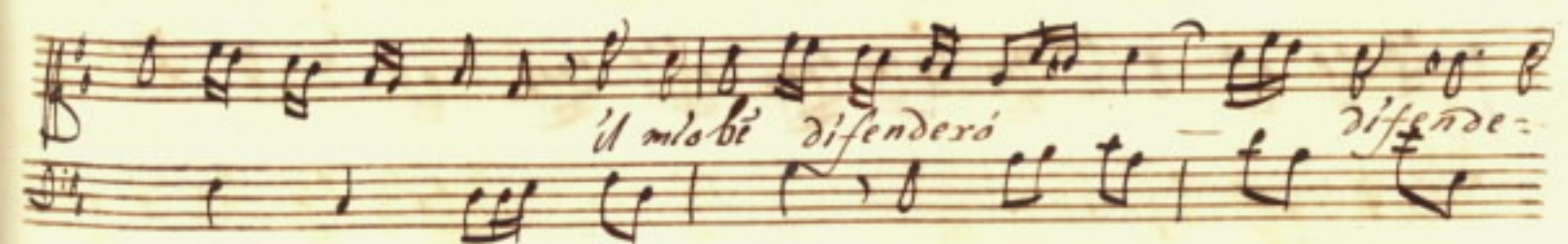
Handwritten musical notation on two staves. The first staff starts with a bass clef and a common time signature. The word "Argene" is written in cursive on the left side of the staff. The second staff continues the notation and ends with the annotation "fino a gl" written in cursive.

Handwritten musical notation on three staves. The notation continues with various rhythmic patterns and rests.

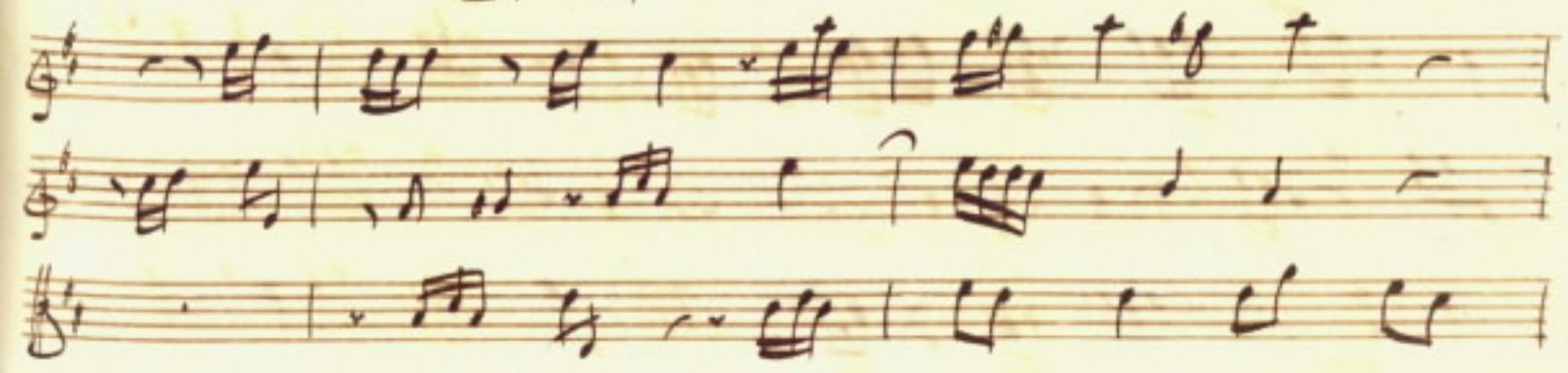
Handwritten musical notation on two staves. The first staff begins with a bass clef and a common time signature. The annotation "ultimi respiri" is written in cursive across the first few measures of the first staff.



Three empty musical staves at the top of the page, each with a treble clef and a key signature of one flat (B-flat).



Musical staff with a vocal line. The lyrics are: *il mio be' difenderò* *difende-*



Three musical staves with accompaniment, likely for a keyboard instrument, showing chords and melodic lines.



Musical staff with a vocal line. The lyrics are: *ro* *il mio*

Handwritten musical score for the first system, consisting of four staves. The first three staves are vocal lines in treble clef with a key signature of one sharp (F#). The fourth staff is a basso continuo line in bass clef. The lyrics "ben difenderò" are written under the first staff, and "difende -" is written under the fourth staff.

Handwritten musical score for the second system, consisting of four staves. The first three staves are vocal lines in treble clef with a key signature of one sharp (F#). The fourth staff is a basso continuo line in bass clef. The lyrics "ro" are written under the first staff, and "il mio ben difenderò" is written under the fourth staff.

Handwritten musical score on ten staves. The notation includes various rhythmic values, rests, and complex chordal structures. A "rit." marking is present above the fifth staff, and the word "difenderò" is written in cursive below the fourth staff. The manuscript shows signs of age with some staining and ink bleed-through.

doppo i pianti ed i sospiri

ancor sangue offris sa-

Handwritten musical score for the first system, consisting of four staves. The top three staves contain instrumental parts with various rhythmic values and accidentals. The fourth staff is a vocal line with the lyrics: *pro' anco' il sangue offerir sapro'*

Handwritten musical score for the second system, consisting of four staves. The top three staves contain instrumental parts. The fourth staff is a vocal line with the lyrics: *anco' il sangue offerir sapro'*

Art:

Dimmi bell' tost' mio tu che di Cleopatra la
re
crudeltà detesti è pierosa li mostri à
chi per suo destino nò per tua colpa è sventurato è op-
presso perche nò fai l'istesso col' alma mia fedele che
sol per te l'acquisce perche sepre cò me così crudele

10

And.

perche no mi lasci se cruda son io

perche ti distruggi se speme no ue

perche no mi lasci se cruda so

lo perche ti distruggi se speme no ue

And.

perche mi d'ipprezzi s'io t'amo cor mio

perche tu mi fuggi s'io moro per te

perche mi d'ipprezzi s'io t'amo cor mio per-

che tu mi fuggi s'io moro per te

Detailed description: This is a handwritten musical score on aged paper, likely from an 18th or 19th-century manuscript. It consists of eight systems of music, each with a vocal line (treble clef) and a piano accompaniment line (bass clef). The time signature is 3/4. The lyrics are in Italian and are written in a cursive hand. The score is divided into three main sections of two systems each. The first section has the lyrics 'perche mi d'ipprezzi s'io t'amo cor mio'. The second section has 'perche tu mi fuggi s'io moro per te'. The third section has 'perche mi d'ipprezzi s'io t'amo cor mio per-' followed by 'che tu mi fuggi s'io moro per te' on the next line. The piano accompaniment features a steady eighth-note bass line and chords in the right hand. There are some markings above the piano lines, possibly indicating fingerings or ornaments.

And:

libero questo seno già tel d'isi più volte u' amar nò con-

art:

trata mi se pietà ti giuoa ho pietà del tuo mal pietà nò

trata di tua bellezza il grido sai che quivi mi trasse e sai ch'è

figlio stupido al tuo semblante qui mi lega le piante

And:

art:

il tuo martire più che pietà richiede se nò mi dai mercede

Handwritten musical notation for the first system. The top staff is a vocal line in G-clef with lyrics: *ni haurel plera ni m' fexai mox're*. The bottom staff is a basso continuo line in C-clef with the number *14* written below it.

Handwritten musical notation for the second system, featuring a violin part. The staff is in G-clef with the instruction *Vni:* written above it.

Handwritten musical notation for the third system. The top staff is a bass line in C-clef. The bottom staff is a vocal line in G-clef.

Handwritten musical notation for the fourth system. The top staff is a vocal line in G-clef with lyrics: *se parli piu d'amore il*. The bottom staff is a basso continuo line in C-clef.

Handwritten musical notation for the first system, consisting of a vocal line (treble clef) and a piano accompaniment line (bass clef).

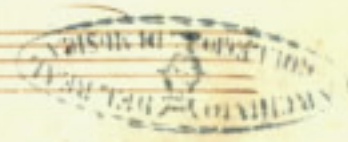
core ch'è di scisto sèpre ti fuggirà

Handwritten musical notation for the second system, consisting of a vocal line (treble clef) and a piano accompaniment line (bass clef).

se parl' più d'amore d' core ch'è di

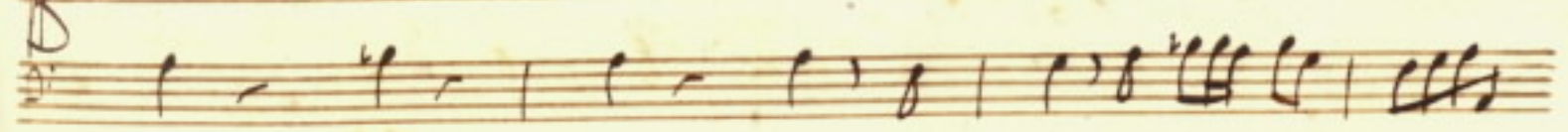
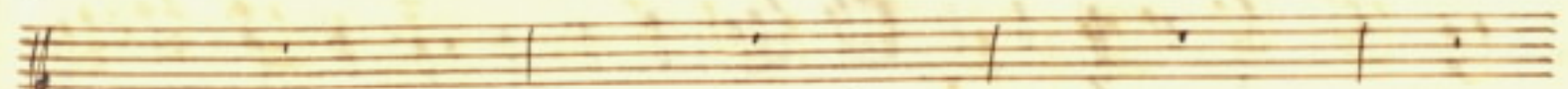
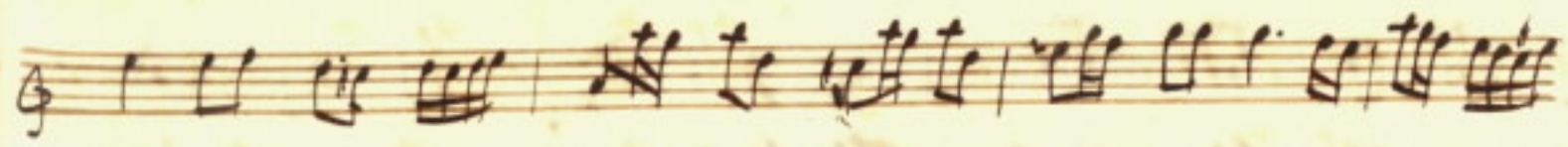
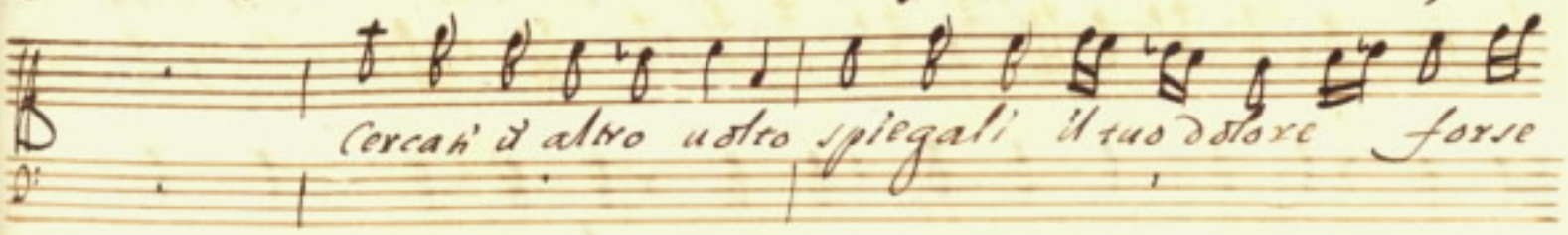
Handwritten musical notation for the third system, consisting of a vocal line (treble clef) and a piano accompaniment line (bass clef).

scisto sèpre ti fuggirà ti fuggirà

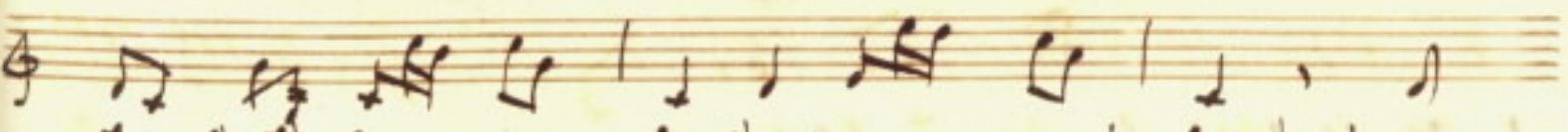
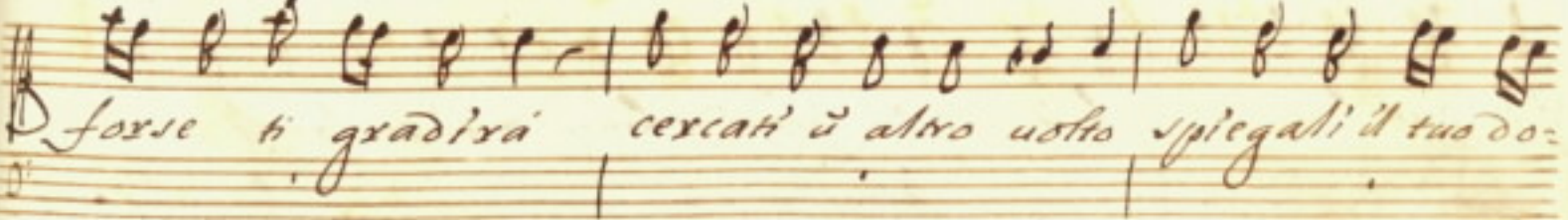


ti fuggirà se parli più d'a-

more il core che disciosto sepre ti fuggirà

Cercai d'altro uostro spiegali il tuo dolore forse

forse ti gradirà cercai d'altro uostro spiegali il tuo do-



lore spiegali il tuo dolo - ve forse ti gradirà

Art.

forse è in poter d'ù alma alle ferite sue scagliar il

dardo ah che nascondà il guardo le piaghe in seno

è in due luci belle più appaiate labri miei parlan le sette

o disciogli al mio cor te

o gradisci la

mia fedeltà

o gradisci la

mia fedeltà

o disciogli al mio cor te

ò gradisci *ò picciogli* *ò gradisci la*

mia fedeltà

ò ti muovi a le crudelie pene *ò mi rendi la*

mia libertà *ò mi rendi la mia libertà* *ò ti muovi a le*

crudelie pene *ò mi rendi* *ò ti muovi* *ò mi rendi la*

Scena quinta *mi* eh nò parlarco:

Fl: mia liberta mirena è fiore si senti mirena difender Cleopatra è troppo crudel:

Alr: ta senti mi fiore difender solo meo è sol:

Fl: sene pazzia ma sai che mi còsola che forse uoi

Alr: di... che forse uoi sù l'egittu arene cò qualche croica

Al:
proua liberar solo meo da te carene basta

m:
se tu sapesti basta ho u sento a me se

Al:
creto e questo l'amor che per me senti. Oh mio cre:

m:
desti guadagnarmi il suo core. Oh mio posesti scoprire questo se

Al:
creto accolta ingrato s'io sperasti che

mis:
poi tu m'amerai dirmi... più non posso do te

No:
ner celato è fiore la mia fiamma cocente io

mis:
non mi credo niente questa è sol mia disgrazia

No: *mis:* *No:*
crepo se non lo dico che tirannia che

mis: *No:*
grazia quel labro m'innamora potrebbe essere ancora

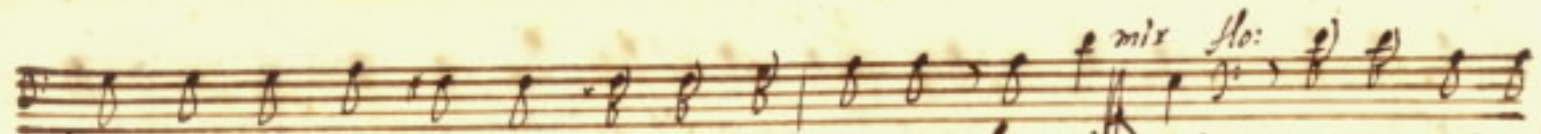
mix: *Ho:* *mix:*
D Degnerai la mi fede m'intene - sisco assai D io son

Ho:
D uostro occhi amati grugni peggio del mio sono ado-

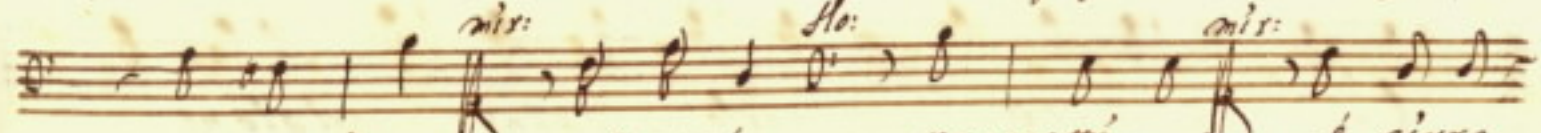
mix: *Ho:* *mix:*
D rati D morir tu mi vedrai m'amerai D già mi

Ho:
D struggo or' su vien qua già sai ch'al fondo del giardi no u'è u' anco

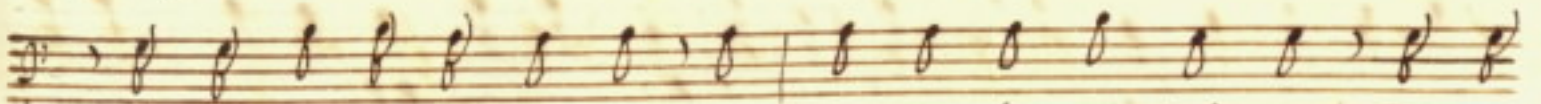
mix: *Ho:*
D curo cinto di folti sterpi 'l sai D sicuro sotto



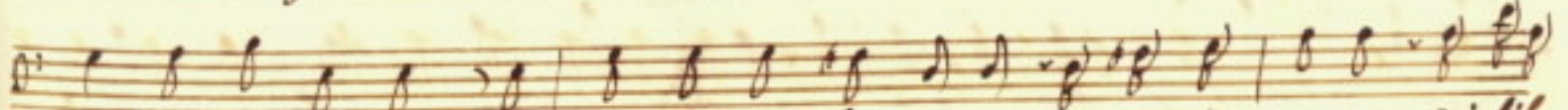
l'antro è una grotta è questa grotta la sai no questa grotta



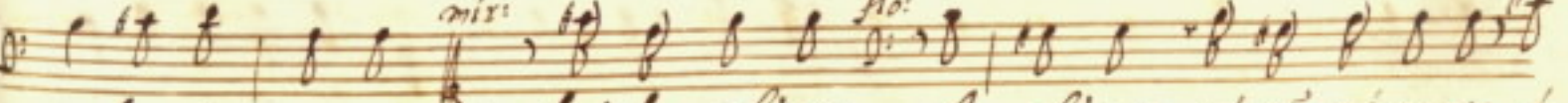
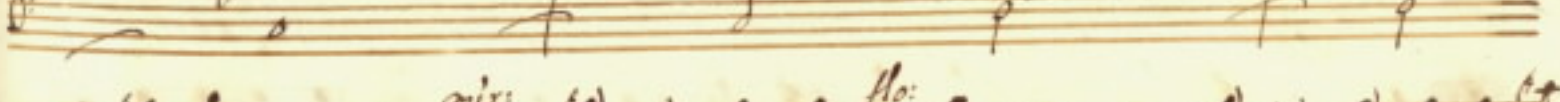
tacerai tacerò prometti è giuro



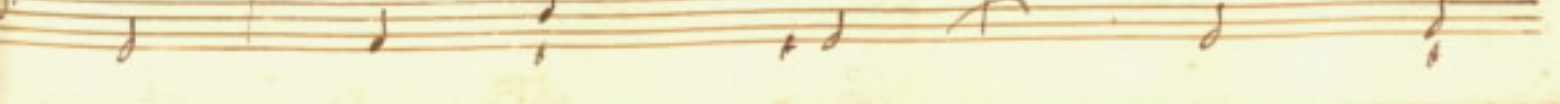
come dico la grotta conduce alla prigione dove



fe Cleopatra richiuder solo meo per quella strada di libe-



rarlo io spero hai la chiave che chiave se no ci porta è



mix:
sol' da quella parte dou' entra il prigioniero *md*

benche ti rievca' varlo dalla prigione

f.
dove si salvera' ci pensi lui quando l'ho scarcerato

mix:
tratti d'andar a far, i fatti suoi molto loro ti

f. *mix:*
deggio e m'amerai sh me felice ten' accorgerai

86

dimil il vero lo credi ch'io per te prouì gl' amorosi af=

fanni tu lo dici *Ho:* che importa eh' uia *mir:* t'in=
Ho: *mir:* *Ho:* *mir:*

gan - ni *unis:*
Credimi si t'inganni

che questo mio uisino sò

Handwritten musical score for the first system. It consists of three staves: a vocal line in treble clef and two piano accompaniment lines in bass clef. The lyrics are written under the vocal line.

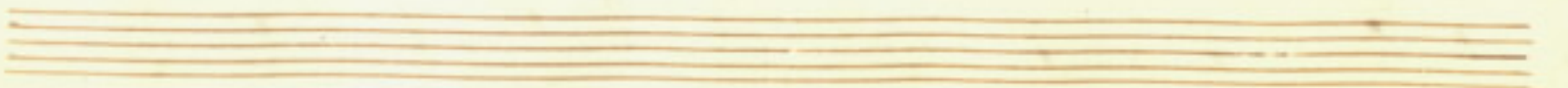
che nò è bellissimo má má má pur nò è per

Handwritten musical score for the second system. It consists of three staves: a vocal line in treble clef and two piano accompaniment lines in bass clef. The lyrics are written under the vocal line.

té t'inganni sí t'inganni che questo mio u-

Handwritten musical score for the third system. It consists of three staves: a vocal line in treble clef and two piano accompaniment lines in bass clef. The lyrics are written under the vocal line.

sino só che nò è bellissimo má má má



Handwritten musical notation for the first system. It consists of three staves: a treble clef staff with notes, a vocal line with lyrics, and a bass clef staff with notes. The lyrics are: *pur nò è per te credimi in uan t'affa-*

Handwritten musical notation for the second system. It consists of three staves: a treble clef staff with notes, a vocal line with lyrics, and a bass clef staff with notes. The lyrics are: *fanni credimi in uan t'affanni che questo boccon-*

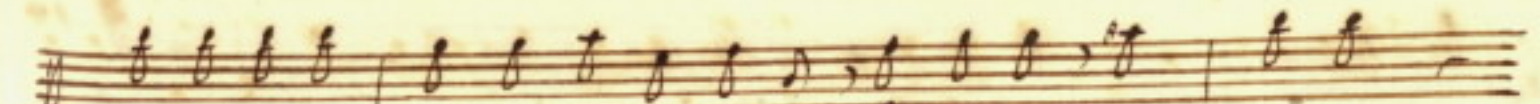
Handwritten musical notation for the third system. It consists of three staves: a treble clef staff with notes, a vocal line with lyrics, and a bass clef staff with notes. The lyrics are: *ci: no sò che sarà bellissimo ma ma nò amaro affè*

Four empty musical staves at the bottom of the page, with a treble clef on the first staff and a bass clef on the second staff.

*f*lo: *mr:* *f*
D'c *mr:* *f*
cor mio ulengua *f* son sorda bene mio tu uol darmi a po di corda

mr:
a 2. *f*
D'c *f*
poueraccio spero in uano piano hai
trixarella sei pur bella sepre in braccio *meno* ?

f
D'c *f*
frena *f* ma quando quando mai mai *pouer-*
ti terro ma quando quando ? *trixarella sei pur*



Braccio spero in vano piano piano hai fretta

Bella sempre in braccio stretto stretto >> sempre ti terrò ma quando

mai ma - i hai fretta >> ma

>> in braccio stretto >> >> in braccio stretto >>

quando mai mai hai fretta >> ma

stretto >> sempre in braccio stretto



quando mai mai che pag-
strada si terrà ma quando
quale che animale fai male assai fai male assai
spero sì che m'ami assai spero sì che
che paguale che animale fai male assai
m'ami spero sì che m'ami assai che m'ami assai

Scena 6^a Cleopatra
e Argene

da una parte
poi Arsinoe la Art:

dell' altra

Rit.
poi Mirra

largo
vengo a voi luci mie belle

care stelle care stelle del mio cor uengo a

voi luci mie belle care stelle care stelle del mio

cor care stelle - le care stelle - del mio cor

senza il lume ch'in voi splende no accende no ac-

cende il dio d'amor senza il lume ch'in voi splende no ac-

cende no accende il dio d'amor da capo

Ceo: Argento i tuoi sospira Cleopatra gradisco e uoi ch'lo

cleo: *Arg:* *Art:* *mit:*

moza D ma nò risolue ancora D nò risolue D è nò baxa D si=

Art: *cle:* *mit:* *cle:*

gnora un di m'uccido che brami D una parola D ditto

mit: *cle:* *Art:*

ma 'u' uorrei dà sola à sola Duane in d'yparte argene D ar=

mit: *Art:*

tendo i cenni tuoi D così uà bene D'aque dà te scher=

D nita eser sèpre dourà la mia gran fé

Arts
perche ti di- struggi se speme nò u'è
Arts
perche tu mi

perche ti di- struggi se speme nò u'è
fuggi s'io moro per te
cl: ch'accolto
mix: il uero
cl: è tanto ardisce un

seruo olà
min: chiama sua maestà
cl: parti mirena e

rit:
taci nò temete di niente son secreta così natural

parte de:
mente floso si ceschi è s'inpriioni in tanto

Arg:
regino dà per tutto del giardino real cinte le mura Natua

Art:
pace ben mio nò è sicura Cleopatra se

de:
forse l'opra mia nulla uale di mè diponi anz

cora non son tanto infelici i casi miei ch'io deggia confin-

dar la mia vita a miei nemici troppo è Reina offendi alma

nata allo scemo il suo consiglio solo è del giusto e al-

loro ch'io uedei in periglio la tua vita il tuo

regno a solo - meo sarei nemico ancora

de:

tanto da te no' uoglio anzi come seguace d'arsinoe

tua che Solomeo difende copatifico arta-

Scena settima

bano il tuo cordoglio Achilla e detti

Ah: Reina ecco dal capo ritorno al fin già

conte di poppe l'auventure a te sarà no' yde-

gnor ch'achilla al tuo piede Real ch'ini la fronte

cle:

il servir solo meo no sapriuo a tua colpa odio no

prouo contro di te mi piace il valor da per tutto ouelo

Ach:

trouo il gra Cesare uiene ha già precorsi i suoi

Ari:

paysi la fama e giunta ed hora qui lo uedrai come t'oi

Ach:

ed se irato sol perche di poppeo gli spiagge il fato

cleo:

or le sue trame ordite piangerai solo meo

ffhi

tutti partite io preparo l'albergo al gra' mo:

Arg:

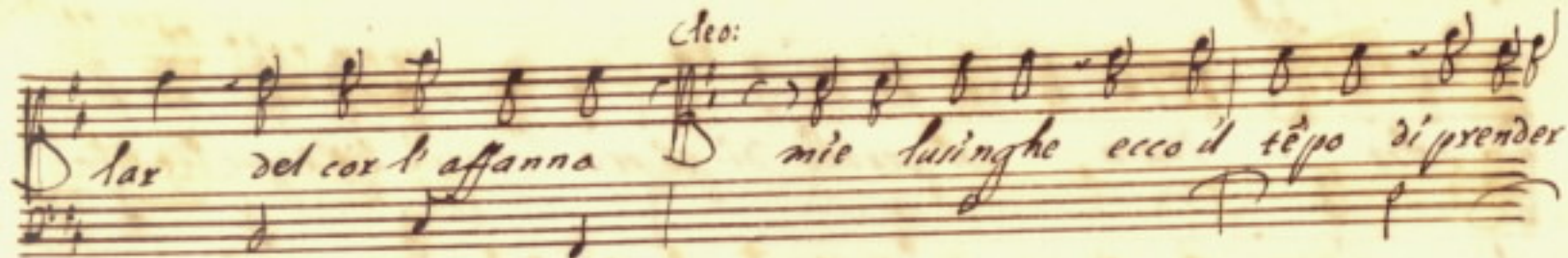
narca ueggio di tolo meo l'ultimo danno

Art:

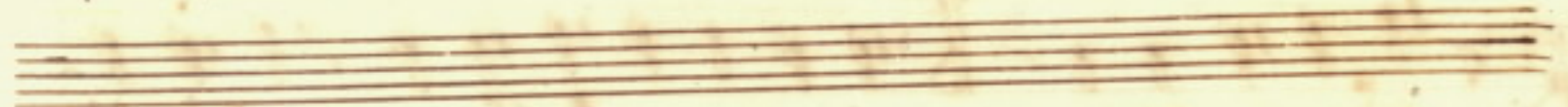
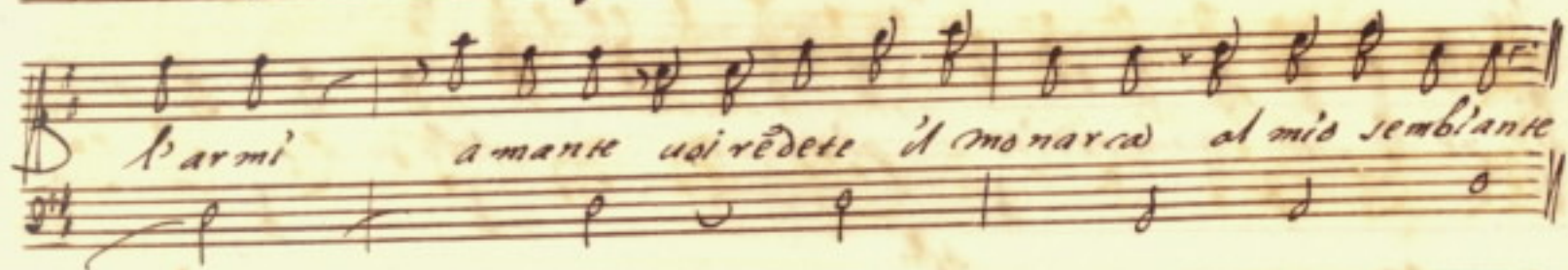
Ass:

tomo di tolo meo l'ultima parca spero di ranno:

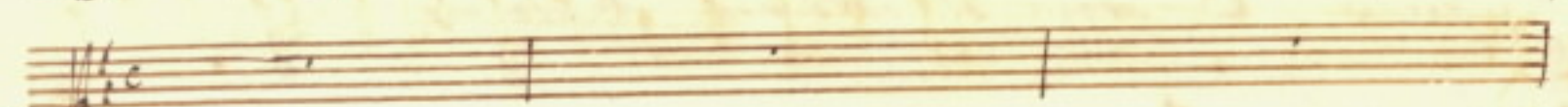
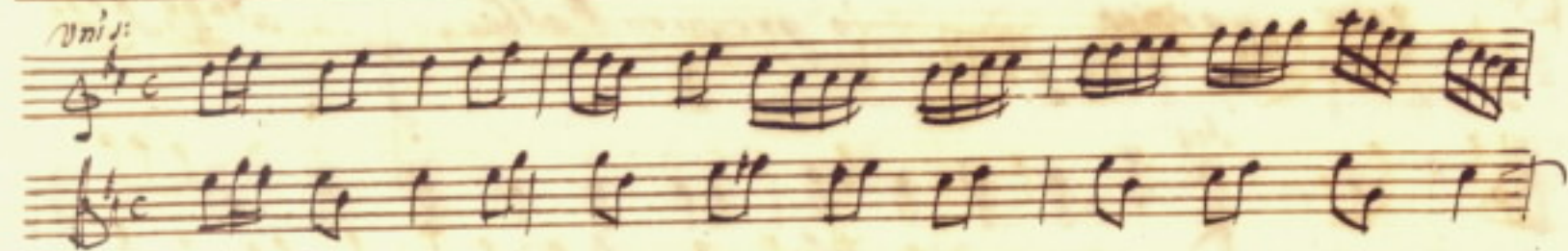
Alto:
Lax del cor l'affanna D mie lusinghe ecco il tēpo di prender



L'armi amante uoi rēdete il monarca al mio semblante



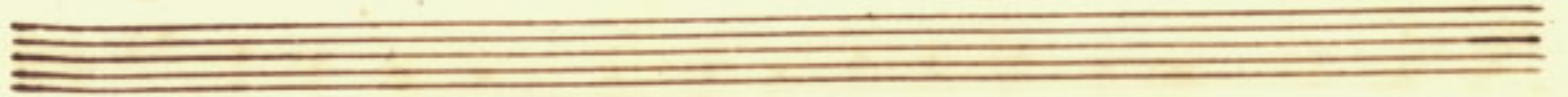
Violini:



Alto

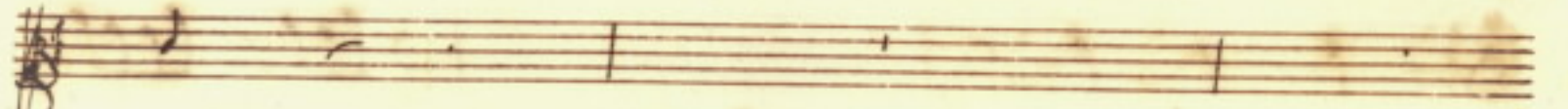
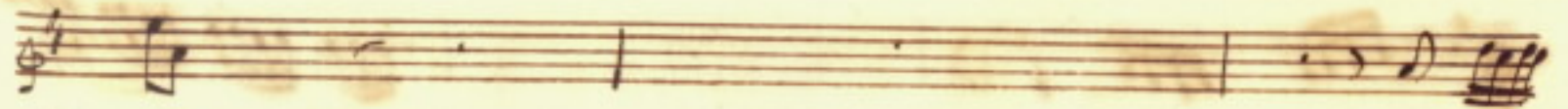


Figlio nò eser tardo à saenarli 'l cor



Figlio nò eser tardo à saenarli 'l cor

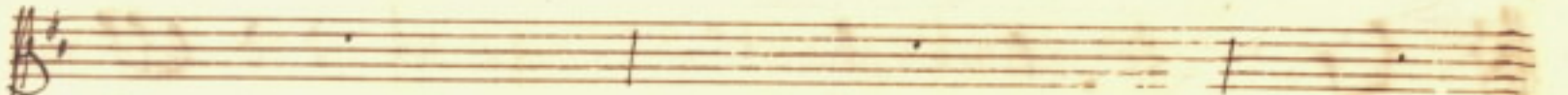
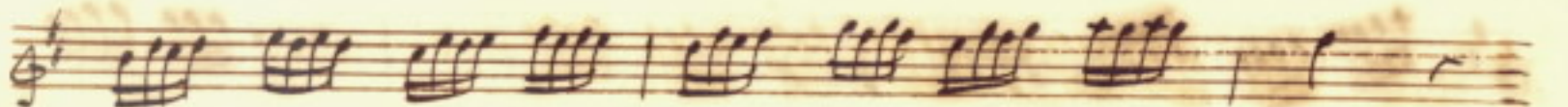
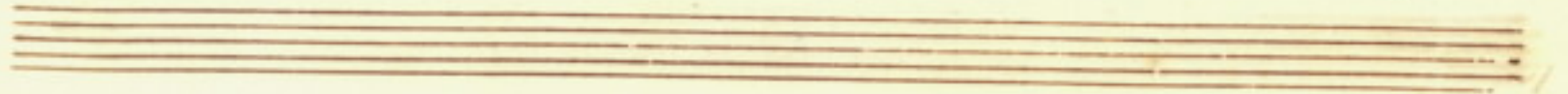




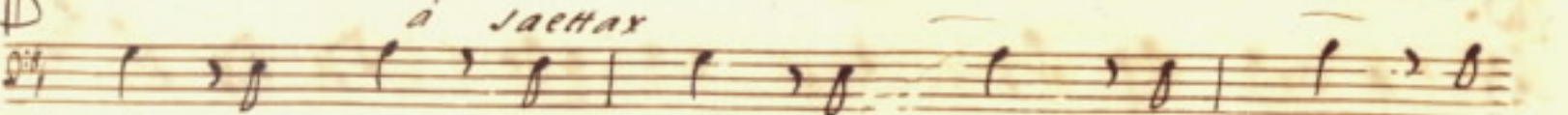
a saetta



gli a saetta - gli il cor



a saetta



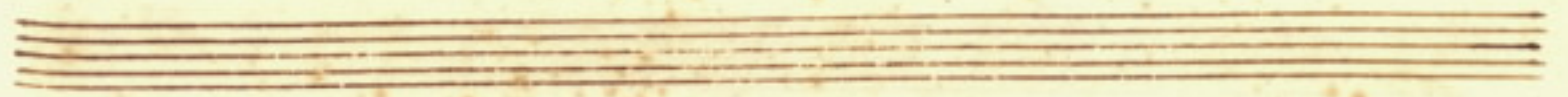
Handwritten musical score for the first system. It consists of two staves. The upper staff is a vocal line in treble clef with lyrics written below it. The lower staff is a piano accompaniment in bass clef. The lyrics for this system are "gli a saettargli il cor".

Handwritten musical score for the second system. It consists of two staves. The upper staff is a vocal line in treble clef with lyrics written below it. The lower staff is a piano accompaniment in bass clef. The lyrics for this system are "a saettar".

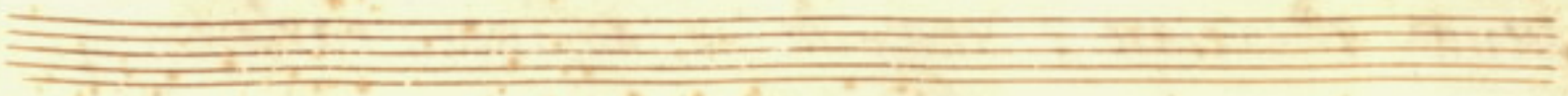
Handwritten musical score for the first system. It consists of four staves. The top two staves are for piano accompaniment, with the right hand in treble clef and the left hand in bass clef. The third staff is the vocal line, with lyrics written below it. The fourth staff is for piano accompaniment, with the right hand in treble clef and the left hand in bass clef. The lyrics are: *gli à saemargli il cor*

Handwritten musical score for the second system. It consists of four staves. The top two staves are for piano accompaniment, with the right hand in treble clef and the left hand in bass clef. The third staff is the vocal line, with lyrics written below it. The fourth staff is for piano accompaniment, with the right hand in treble clef and the left hand in bass clef. The lyrics are: *che*

Handwritten musical score for the first system. It consists of four staves. The top staff is a vocal line in G-clef with a key signature of one flat. The second staff is a piano accompaniment in G-clef. The third staff is a bass line in F-clef. The fourth staff is a piano accompaniment in F-clef. The lyrics are: *cedono ad ũ guardo che*



Handwritten musical score for the second system. It consists of four staves. The top staff is a vocal line in G-clef with a key signature of one flat. The second staff is a piano accompaniment in G-clef. The third staff is a bass line in F-clef. The fourth staff is a piano accompaniment in F-clef. The lyrics are: *cedono ad ũ guardo l'anime grandi ancor che cedono ad ũ*



Handwritten musical score for the first system. It consists of three staves: a vocal line in G major (one sharp) and two piano accompaniment staves. The vocal line begins with the lyrics "guardo l'anime grand' ancor che ce - dono ad un". The piano accompaniment features a rhythmic pattern of eighth and sixteenth notes.

Handwritten musical score for the second system. It consists of three staves: a vocal line in G major and two piano accompaniment staves. The vocal line begins with the lyrics "guardo l'anime grandi ancor". The piano accompaniment continues with a similar rhythmic pattern.

Scena 8.^a Cesare è detta, che va ad incontrarlo &

Ces:

A' la donna del nilo cesare già sog-

getto dona il suo cor che maestoso oggemo

cle:

al grà fione del sebro al cui ben è danto l'olo:

canto dell' alma straggiata Reina offre in bi:

Ces:

buto straggiata è u' è al mondo

chi del tuo volto ai raggi nō porga uoti anzi che tenti d=

traggi ^{de:} nō sō lo qual tu dici mi qual sia la bel=

tade che il tuo ciglio benigno in me ritrova

Cesare credi o mē poco mi gioua si chiara Ar=

gene il figlio del persiano Regnante ^{ce:} Questo ^{de:} che gid si

Scene nona

pone alle sue piante

Argene è d'essi

Arg:

Calciano le grand' orme queste felici arenò ond' lo

Cap:

lieto le bacio abbraccio Argene dimmi perche scor-

Arg:

rendo uai nel regno d' Egitto chiedilo a Dio =

Cap:

patria intendo e tu bella Re =

Ado:
ina narrami che ti affligge solo meo

che le stelle mi fecero germano e il geni-

tore per le leggi del Regno mi destinò con-

Arg:
sorse appira alla mia morte el solo in

Ado:
trono seder uorria Dmà di seguaci è forse così

prima non sono che parenti cadere

Argo:

or ch' in egipto giunse Cesare il grande teme arai

Ado:

meno è giudice severo signor ti bramo e

Ces:

protettor ti spero respira o bella e

sappi che di poepe la morte già d'incarà m'ha resa

di Solomeo la uita or che nemico lo ueggio à deo-

patra pparar lo sento alla secōda offesa

mà dou' è uost ragione ch' à Cesare dauanti à

cōparix nō tardi *de:* è mio prigione *Arg:* ponai quando ti

piaccia farlo condurre à piedi tuoi *de:* per ora

posa richiede il fianco e dal peso dell'armi e dal ui-

aggio affaticato e stanco all'or che al mio ri-

poso così ti scorgo intenta turbi la pace mia

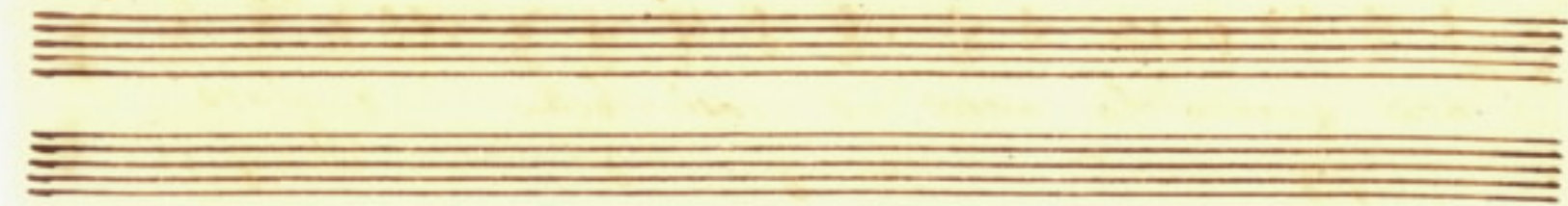
Cleo: oh se m'amare so sarei pur contenta per ch'ia

Cesare piaccia oh gelosia e dolce la fa-

ficò quando la meta è così bella è giuro

che per mirare il vostro oco tutte le gratie hanno l'a-

siò mille volte uoxei del sebro al nito



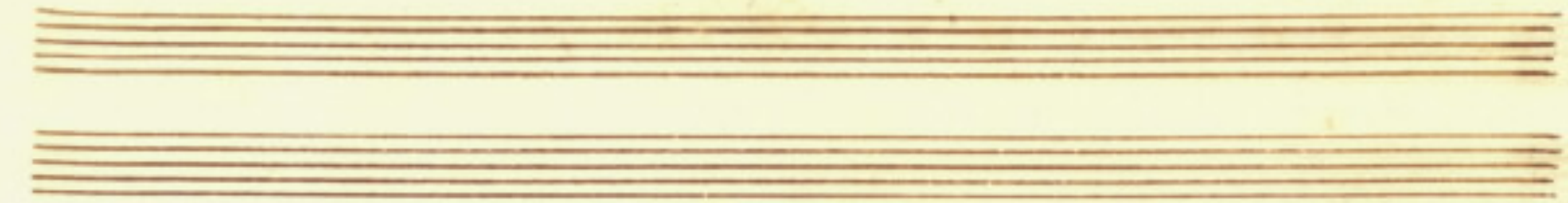
Handwritten musical notation for three staves. Each staff begins with a treble clef, a key signature of one sharp (F#), and a time signature of 12/4. The notation consists of rhythmic patterns and notes across the staves.

Handwritten musical notation for three staves with lyrics. Each staff begins with a treble clef, a key signature of one sharp (F#), and a time signature of 12/4. The lyrics are written below the notes.

Alto: *verresti* *perche* *ver-*

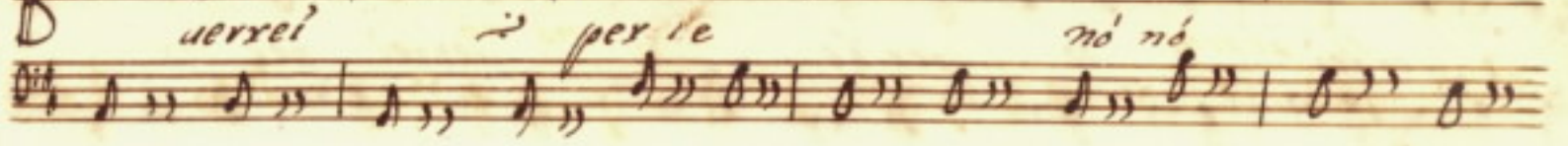
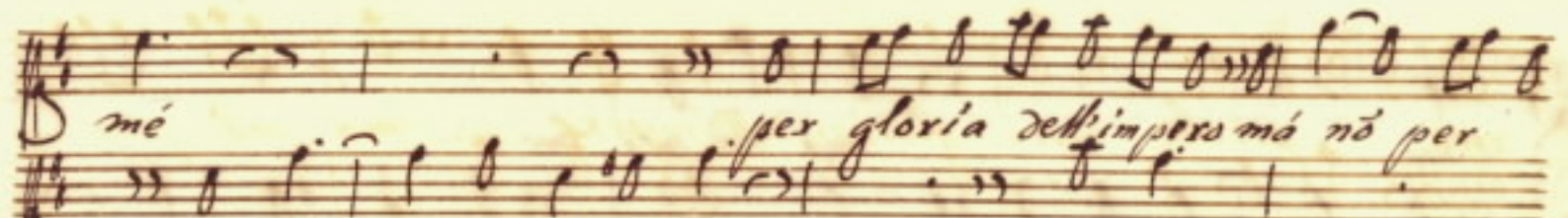
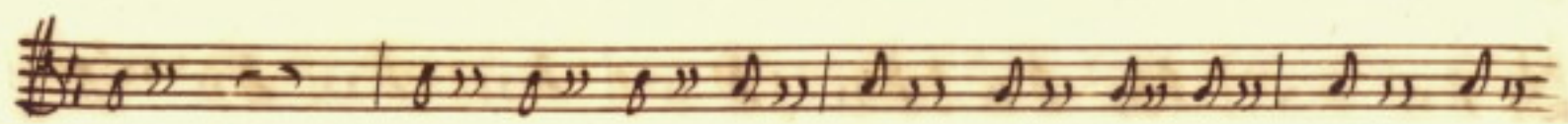
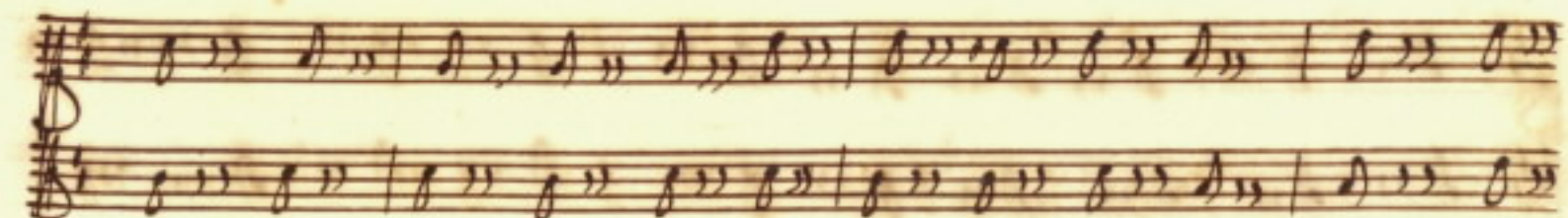
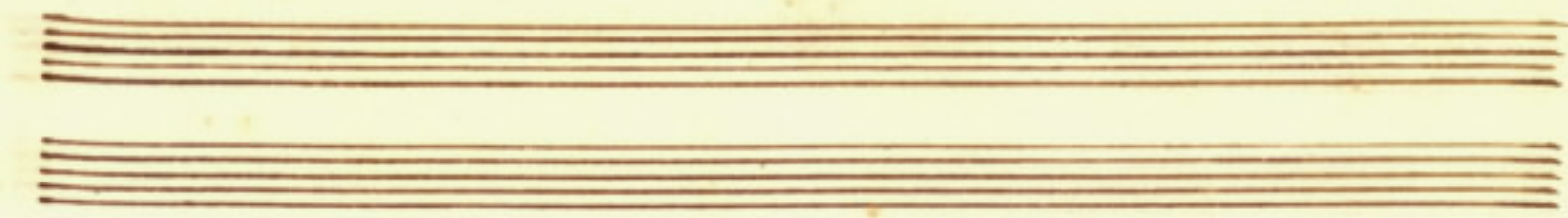
Soprano: *si perche*

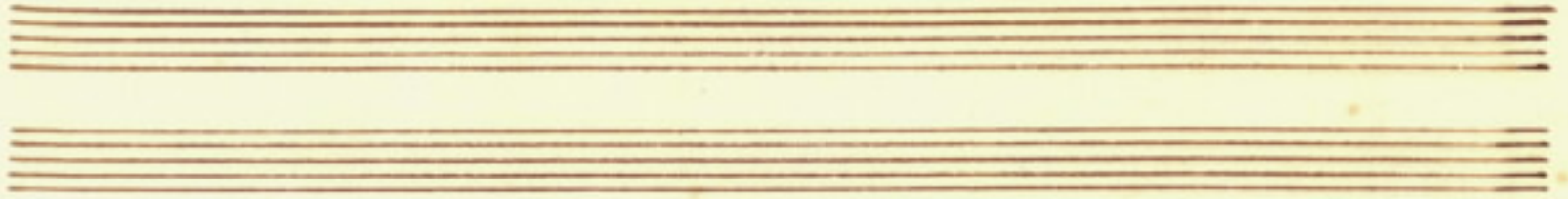




D *regni* *perche* *per gloria dell'imperio* *ma no* *per*
 B *si perche* *no no*







me *ma no' per me'*

verrei *per te* *verrei per te*



Handwritten musical score on aged paper, featuring ten staves. The first four staves contain instrumental notation, likely for a string quartet or similar ensemble. The fifth and sixth staves contain vocal notation, with the lyrics "si guida honor guerriero se" and "se" written below. The remaining four staves are empty.

Three staves of handwritten musical notation, likely for a string ensemble or keyboard. The notation consists of rhythmic patterns of eighth and sixteenth notes with stems, organized into two measures per staff.

guir il nume arciero ge - nio del cor no' e' col - pa del cor no'



no' è no' è genio del cor no' è no' no' ge-
 è no' è colpa del cor no' è no' no' col-

nia del cor nõ è uerresti da Capo
- pa del cor nõ è

scena decima Arsinoe, è poi Artabano, è detto

Art:

M Rumolo sonante Arsinoe ancor sin-

Ces:
 clina *Axl:* oh che sè biance bella chi set di menfi Prenci =

peysa infelice è benche scorra reggio sàque degl'

Aui per le mie uene io stimo il mio preggio più

grande exerti ancella *Ces:* è bella Cleo =

patra *Axl:* Arslnoe è bella postato alle tue piàce grà mo =

Ces.
D'arced dell' orbe ecco Artabano il regnator de parsi

Asi. *Ces.*
D' appunto al sen ti stringo è già la fama il tuo na-

lor mi' p'esse ma nò seppi giamai ch'arsinoe entro i begh

Asi.
D' occhi il sole haueve tã l'innocenza offera signor pro-

Ces. *Asi.*
D' teggi è chi t'insulta il fiero genio di Aeo:

Ces:
 D'atro di Solomeo di mè gloco si prende uaga è l'of:

And:
 feja è uaga chi l'offende penso che la Re:

ina cò mèrognieri accenti t'habbla di

And:
 glà preoccupato d' core mà l'ingiuato ri:

gore ben presto scoppelral parla à chi uasi è ciacun ti di:


Ces:
ra gl'ingàni suol di Salomeo di Cleopatra i sensi

Art:
mi si farà paleji entro carcere or-

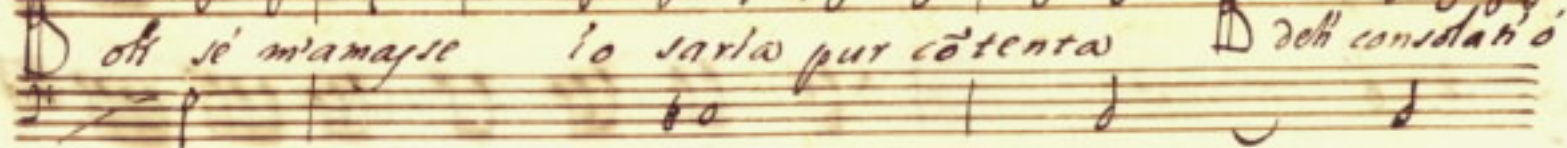
Ces:
renda ei fra tanto è sepolto farò ch' a lui la libertà si

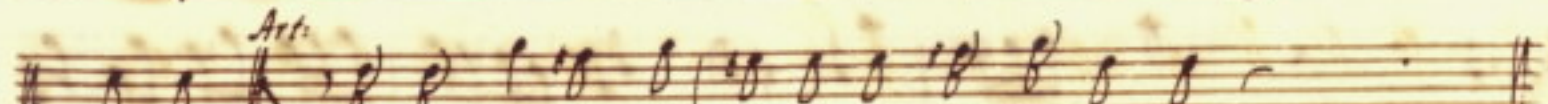
renda tu di caccia dal seno di duol che si tor-

Art:
menta se Cesare è in Egitto cessa la tirannia

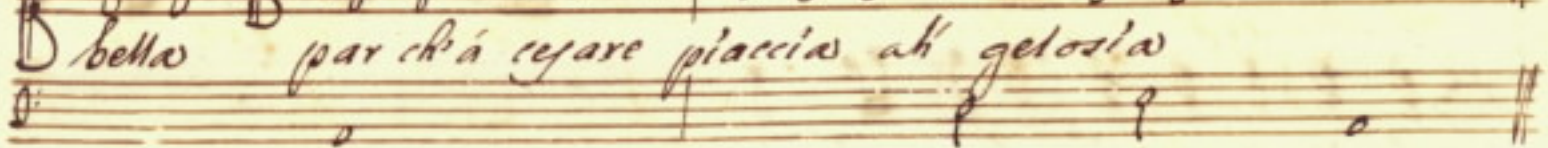
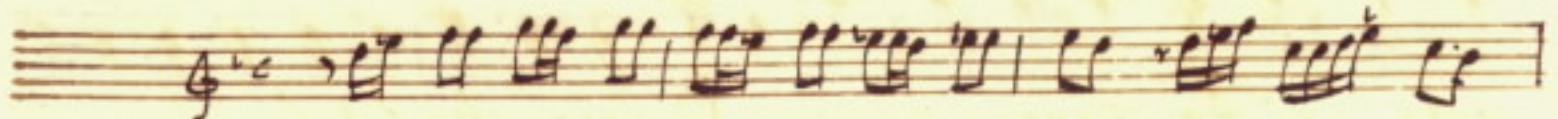
And.  *Ces.*

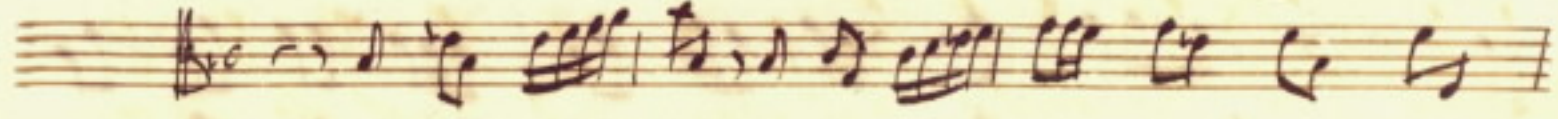
Ohi se m'amasse lo saria pur cōtenta deh' consolati' o

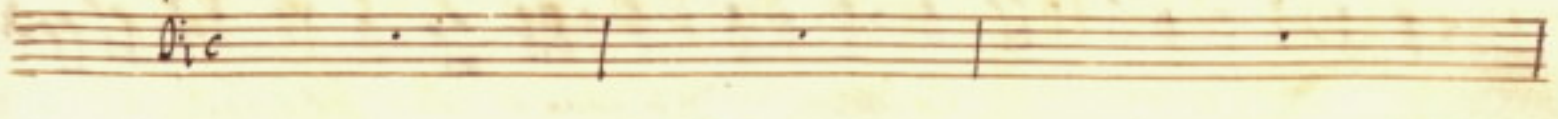


And. 

bella par ch'á cejare piaccia ah' gelosia






Handwritten musical score for the first system. It consists of five staves. The top four staves are for the vocal line and piano accompaniment. The first staff is in G-clef, the second in G-clef, the third in C-clef, and the fourth in F-clef. The fifth staff is a bass line in F-clef. The lyrics "nel mio seno à certo foco" are written below the fourth staff.


nel mio seno à certo foco

Handwritten musical score for the second system. It consists of five staves. The top four staves are for the vocal line and piano accompaniment. The first staff is in G-clef, the second in G-clef, the third in C-clef, and the fourth in F-clef. The fifth staff is a bass line in F-clef. The lyrics "uà serpendo à poco à poco è diletto al cor mi" are written below the fourth staff.

uà serpendo à poco à poco è diletto al cor mi

Da uà serpendo à poco à poco è dileno al cor mi da

al cor mi da

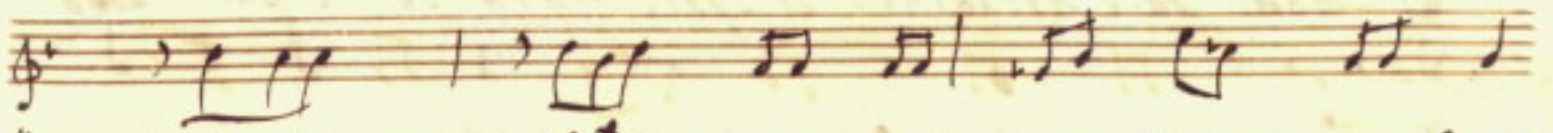
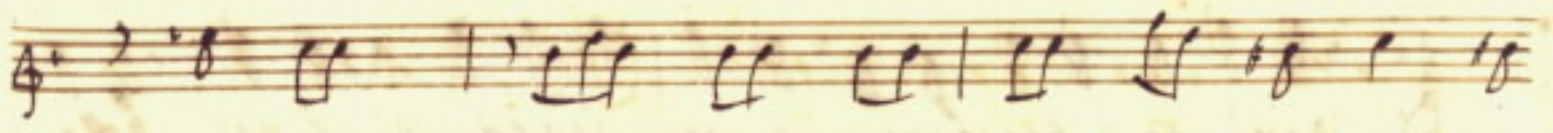


Handwritten musical score for the first system, consisting of five staves. The notation is dense and complex, with many beamed notes and rests. The vocal line is on the fourth staff, with the lyrics "dal tuo ciglio io so che" written below it.

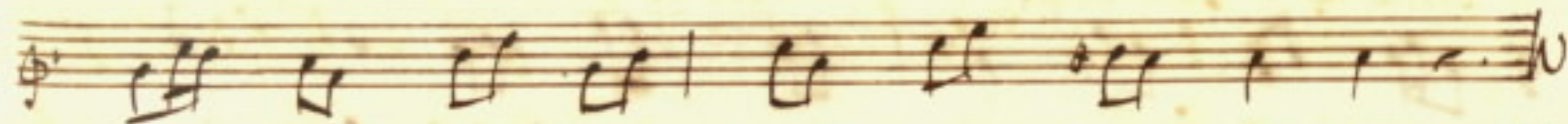
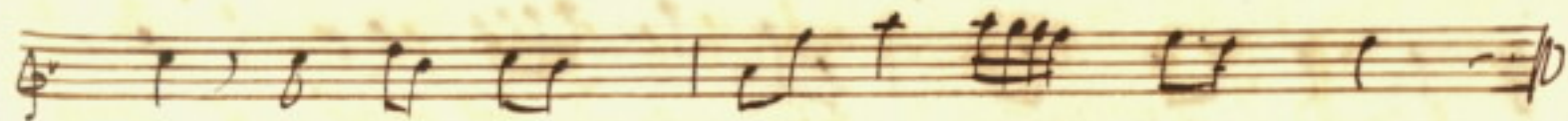
Handwritten musical score for the second system, consisting of five staves. The notation is dense and complex, with many beamed notes and rests. The vocal line is on the fourth staff, with the lyrics "nasce sembra dolce notte farsie ma crescendo mi strugg-ge-" written below it.



Or s'èbra dolce nelle fasce ma crescendo mi struggerà del tuo



D ciglio io so che nasce s'èbra dolce nelle fasce ma crescendo mi strugge-

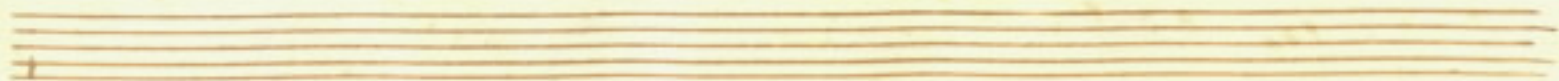


Di *za* *sembra* *dolce* *nelle* *faccie* *ma* *crescendo* *mi* *iruggera*

Ans:

Dati *pace* *Artabano* *se* *sprezzato* *tu* *sei* *e* *pur* *bello*

e *pur* *uogo* *di* *Agate* *roddeco* *i* *gli* *occhi* *miel*



Aria *12/8*
 mio cor mio cor so già nel petto ti sento

palpitax mio cor mio

cor io già nel petto ti sento palpitax ti sento ti

sento amar tú vuoi ti sento amar tú vuoi amar tú vuoi ti

sento ti sento palpitax amar tú uo-

i ti sento palpitar
amar tu vuoi ti sento amar tu vuoi
di questo primo affetto
Io non ti sgrido
non difenderci non so dai lacci tuoi lo

Detailed description: This is a page of handwritten musical notation on aged paper. It features six systems of music, each consisting of a vocal line (treble clef) and a piano accompaniment line (bass clef). The lyrics are written in Italian and are interspersed between the staves. The handwriting is in a cursive style typical of the 18th or 19th century. The paper shows signs of age, including yellowing and some foxing. The lyrics are: 'i ti sento palpitar', 'amar tu vuoi ti sento amar tu vuoi', 'di questo primo affetto', 'Io non ti sgrido', and 'non difenderci non so dai lacci tuoi lo'. The word 'lo' at the end of the final line is positioned to the right of the staff.

no ti sgrido no difenderi no so dai laggi tuoi.

difenderi no so dai laggi tuoi.

Scena undecima || carcere solterranea || Solom:

Adagio

Handwritten musical notation for the first system, consisting of three staves. The notation includes various rhythmic values such as quarter notes, eighth notes, and sixteenth notes, along with bar lines and dynamic markings.

Handwritten musical notation for the second system, including a vocal line with lyrics and a basso continuo line. The lyrics are: *Oh invidia il nascer grande ueggia le mie sventure*

Handwritten musical notation for the third system, consisting of three staves. The notation includes various rhythmic values such as quarter notes, eighth notes, and sixteenth notes, along with bar lines and dynamic markings.

Handwritten musical notation for the fourth system, including a vocal line with lyrics and a basso continuo line. The lyrics are: *è poi il pen - ta*

quanto di quanto era meglio entro rustiche fasce apris

gl'occhi alla luce quanto men duro l'origlier ch'appresta cinto

D'herbe la terra che di morbide piume il lusso infame pare

Da onta del fato cost'ag'haurei l'amore no m'hauesse rapito

In petto il core Arsinoe e doue sel fra tante pene e'

tante à darmi ù grà ristoro ù raggio by tercio del tuo semblante

Handwritten musical notation for the second system, featuring a treble clef staff with a complex rhythmic pattern.

Handwritten musical notation for the third system, featuring a treble clef staff with a complex rhythmic pattern.

Handwritten musical notation for the fourth system, featuring a bass clef staff with a simple rhythmic pattern.

Handwritten musical notation for the fifth system, featuring a bass clef staff with a simple rhythmic pattern.

Handwritten musical notation for the sixth system, featuring a treble clef staff with a complex rhythmic pattern.

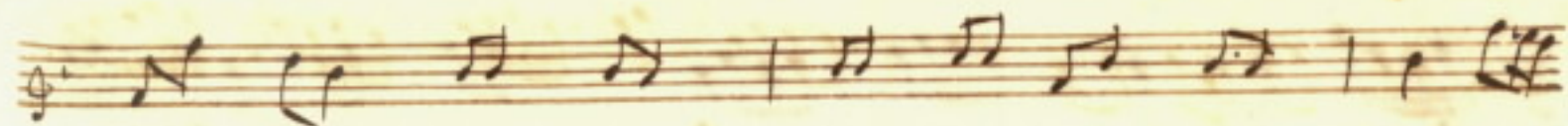
Handwritten musical notation for the seventh system, featuring a treble clef staff with a complex rhythmic pattern.

Occhi belli il suo lume

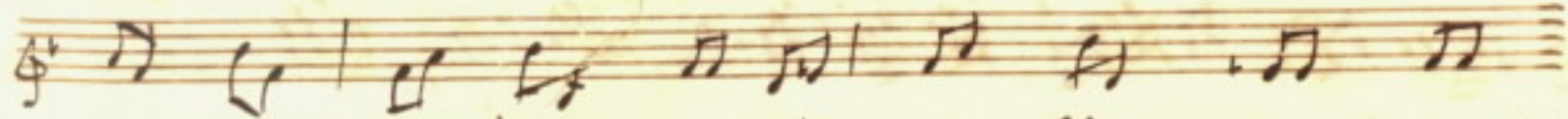
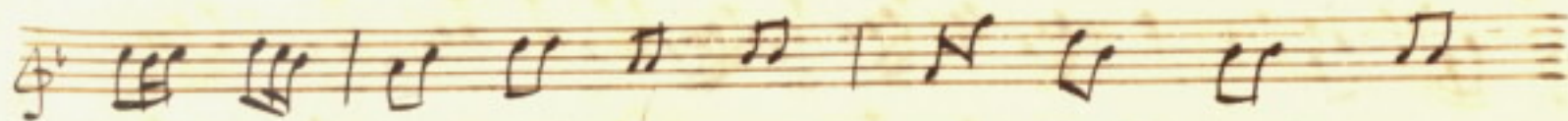
Handwritten musical notation for the ninth system, featuring a basso continuo line.

Handwritten musical score for the first system, consisting of three staves. The top two staves contain melodic lines with various note values and rests. The bottom staff contains the lyrics: *chi bel-li il no - stro lume dolce è caro far po-*

Handwritten musical score for the second system, consisting of three staves. The top two staves contain melodic lines. The bottom staff contains the lyrics: *rebbe far potrebbe il mio dor dolce è caro caro e*



Dolce far potrebbe il mio dolor — il mio dolor



dolce è caro caro e dolce far potrebbe il mio do

lor — il mio odor

Handwritten musical score for the second system, featuring five staves with various musical notations including notes, rests, and bar lines.

seid pensar solo al mio nume

seid pensar solo al mio nume tanto amaro no lo rende a questo

à questo cor no lo xende à questo cor

scena xii Noa è d'eno
Solomeo

qual uoce è quella ch'ingest' orrido arbergo mi ferisce l'a-

forse qualche infelice sepolto in quest'abisso pianger

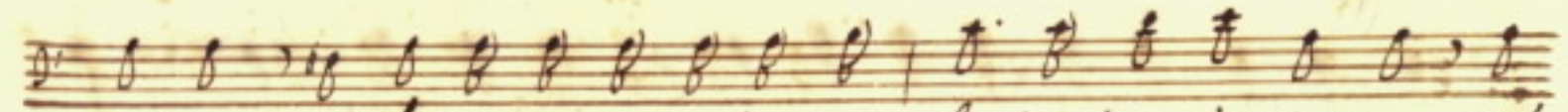
meo uorra l'apre sue pene è meo allegerix le sue ca-

tene solo - meo che sarà chi sel sò floxo

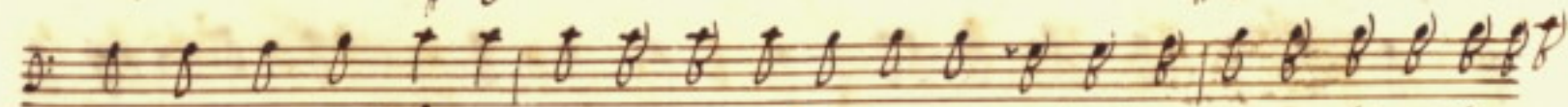
floxò ueni che chiedi ho ù natural dà che sono ingrati

sato ch'ad'ogni picciol' moto quando uoglio parlar mi

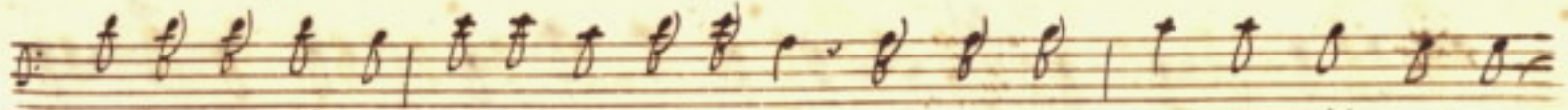
manca il fiato chi guì t'aperse il uarco l'industria



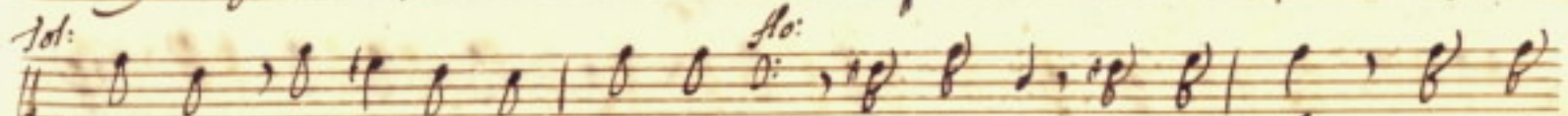
miò ti baji per ora di saper ch' al primo ingresso mi



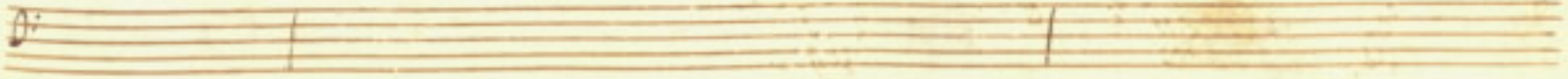
è smorzato il lume che mi serviva di scorta è sò passato fra mille sassi e



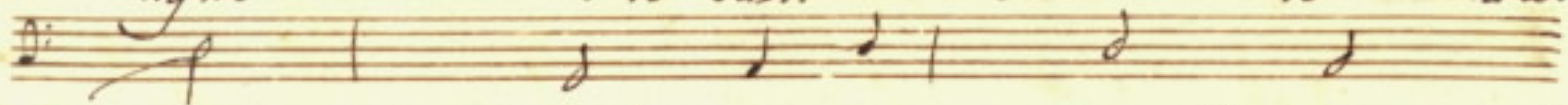
stexpi e fossi e spine pria di nouar di questa grozza il fine



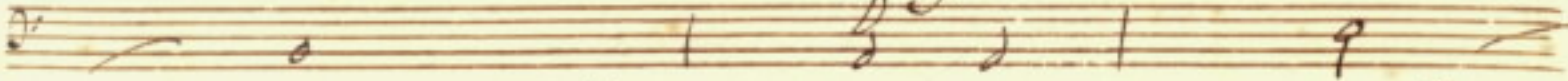
morte o alta mi rechi morte no che di lei ne mi



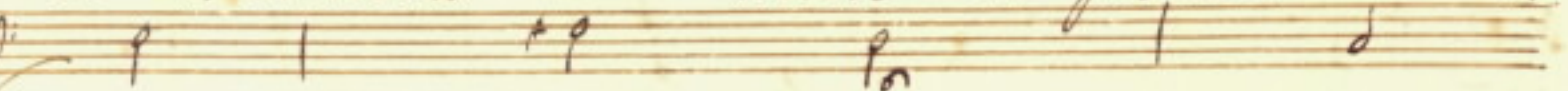
nostro me nuntio à te sarai ultra non io ma al



me liberta ti daro questa lucerna serui-



ra di lanterna *sol.* liberta mi prometti *ff.* la



degni due con-duce la via d'onde ue-



niti *ff.* appunto al fondo del giardino Reale *ff.* e in altra



Al.
 parte quella dou' io passai questa è secreta anzi del tutto i:
 gnota *Al.* inerte è solo io che farò fug-

gite anch' io son disarmato è in queste congiun-
 ture son grand' armi le gambe perche achi fugge con
 arme al fianco appesa è sepre impedimento è no di-

arme al fianco appesa è sepre impedimento è no di-

arme al fianco appesa è sepre impedimento è no di-

arme al fianco appesa è sepre impedimento è no di-

Sol. *Al.*
fesa D ma doue andrò tu puoi prender la via del

bosco che confina coll'Anero al fin se tanta di-

ficoltà tu fai di qui nò uelrai uieni signore ri-

soluiti nò più che passan l'hore *Sol.* D m'eyponi à gran ci-

Sol. *Sol.*
mento se poi nò nò riegio D io ci perdo la

Al:

uita e tu ritorni un' altra volta al fuoco

Vn: 1

e douc mi

Handwritten musical score for the first system, consisting of four staves. The top two staves are for a treble clef instrument, and the bottom two are for a bass clef instrument. The lyrics "guidi nemica mia sorte" are written across the third and fourth staves. The notation includes various rhythmic values, accidentals, and complex melodic lines.

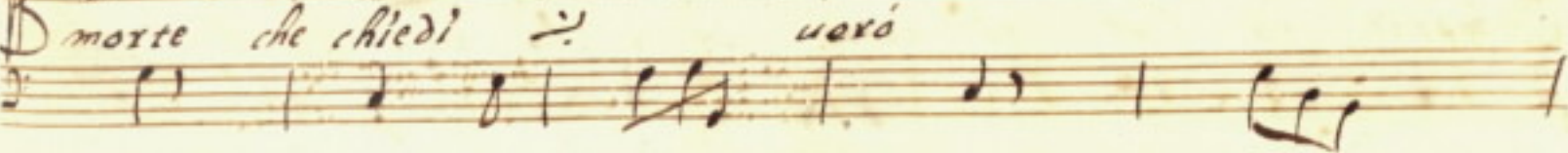
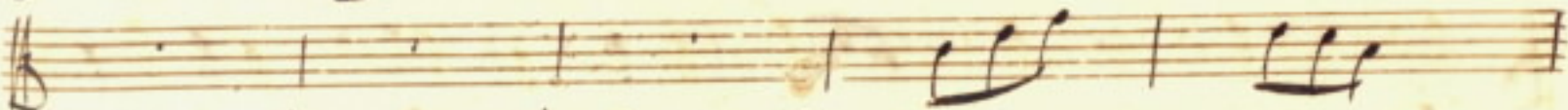
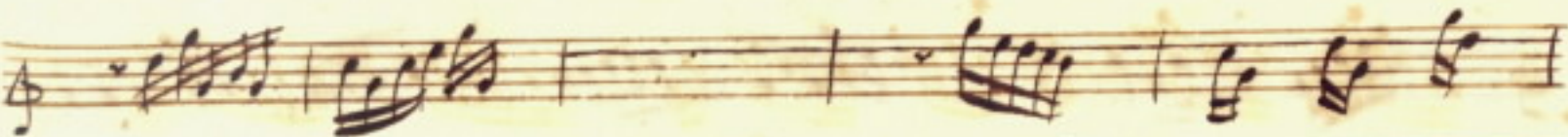
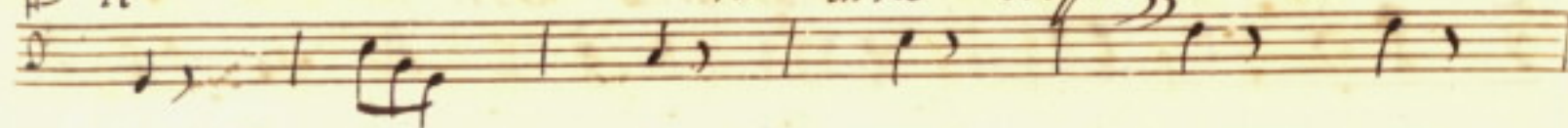
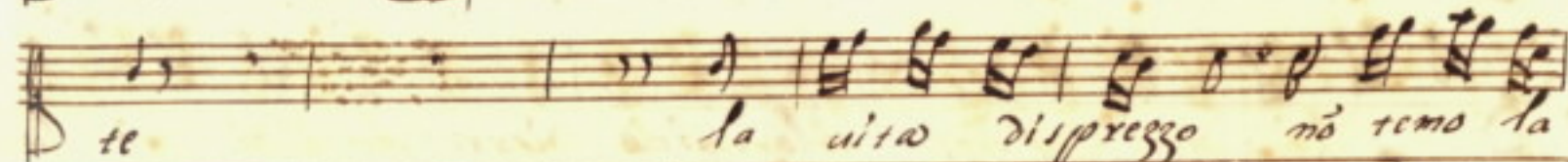
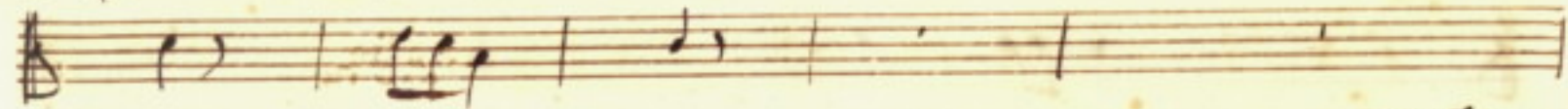
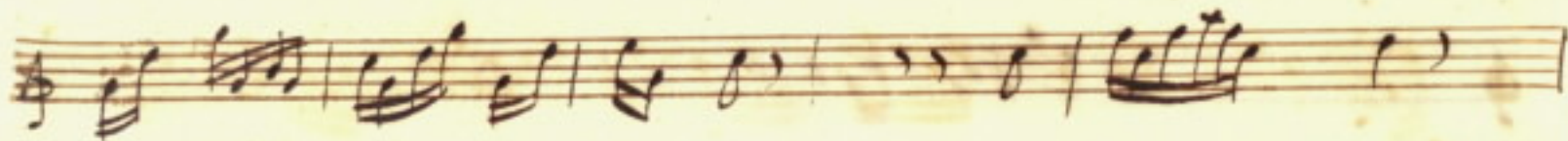
Handwritten musical score for the second system, consisting of four staves. The notation continues from the first system, featuring complex melodic lines and rhythmic patterns. A large fermata is placed over the final notes of the piece, indicating a long pause. The bottom two staves show a bass clef instrument with a complex melodic line.

Handwritten musical score for the first system. It consists of four staves. The top staff is a vocal line in treble clef. The second staff is a piano accompaniment in bass clef. The third and fourth staves are a grand staff (treble and bass clefs) for the piano accompaniment. The lyrics are written below the vocal line.

la uita d'iprezzo nò temo la

Handwritten musical score for the second system. It consists of four staves. The top staff is a vocal line in treble clef. The second staff is a piano accompaniment in bass clef. The third and fourth staves are a grand staff (treble and bass clefs) for the piano accompaniment. The lyrics are written below the vocal line.

Da morte nò nò ÷ nò temo ÷ la mor



A musical staff with a treble clef, containing several measures of music with various note values and rests.

A musical staff with a bass clef, containing several measures of music with various note values and rests.

A musical staff with a treble clef, containing several measures of music with various note values and rests.

la vita d'ipresso nò curo la morte che chiedi = ues=

A musical staff with a bass clef, containing several measures of music with various note values and rests.

A musical staff with a treble clef, containing several measures of music with various note values and rests.

A musical staff with a bass clef, containing several measures of music with various note values and rests.

A musical staff with a treble clef, containing several measures of music with various note values and rests.

ro

A musical staff with a bass clef, containing several measures of music with various note values and rests.

Handwritten musical notation for the first system, consisting of two staves. The top staff features a treble clef and contains several measures of music, including a dense sixteenth-note passage. The bottom staff features a bass clef and contains corresponding notes and rests.

Handwritten musical notation for the second system. The top staff is a vocal line with lyrics: *Sono alle pene auvezzo*. The bottom staff is a bass line. The system concludes with a double bar line.

Handwritten musical notation for the third system. The top staff is a vocal line with lyrics: *onde se tu m'accidi no che no mi de-*. The bottom staff is a bass line. The system concludes with a double bar line.

xi di perche pur troppo il so onde se tu m'uccidi no che no mi dexidi per

che pur troppo il so no mi dexi- di perche pur troppo il so

Fine del atto Primo