

Ich will singen von der Gnade des Herrn

1. Intrada

Violino 1

Wolfgang Carl Briegel

Musical score for Violino 1, first movement 'Intrada'. The score consists of two staves of music in common time (C). The first staff contains measures 1 through 3. The second staff starts at measure 4 and ends with a double bar line. The music features a series of eighth and sixteenth notes, with a key signature change to one flat (B-flat) in the second staff.

2. Soli/ Chor

Musical score for Violino 1, second movement 'Soli/ Chor'. The score consists of three staves of music in common time (C). The first staff starts at measure 18 and ends with a double bar line. The second staff starts at measure 24 and ends with a double bar line. The third staff starts at measure 32 and ends with a double bar line. The music features a series of eighth and sixteenth notes, with a key signature change to one flat (B-flat) in the second staff.

3. Arioso

Musical score for Violino 1, third movement 'Arioso'. The score consists of three staves of music in common time (C). The first staff starts at measure 1 and ends with a double bar line. The second staff starts at measure 5 and ends with a double bar line. The third staff starts at measure 17 and ends with a double bar line. The music features a series of eighth and sixteenth notes, with a key signature change to one flat (B-flat) in the second staff.

4. Chor

Musical score for Violino 1, 4. Chor, measures 1-28. The score is written in treble clef with a common time signature (C). The key signature is one sharp (F#). The score consists of six staves of music. The first staff (measures 1-4) begins with a treble clef and a common time signature. The second staff (measures 5-8) starts with a measure rest. The third staff (measures 9-12) starts with a measure rest. The fourth staff (measures 13-16) contains two double bar lines with the number '2' above them, indicating a second ending. The fifth staff (measures 17-20) contains one double bar line with the number '2' above it. The sixth staff (measures 21-28) contains one double bar line with the number '2' above it. The score ends with a double bar line and repeat dots.

Ich will singen von der Gnade des Herrn

1. Intrada

Violino 2

Wolfgang Carl Briegel

4

5

2. Soli/ Chor

18

2

24

6

32

3. Arioso

5

8

17

5

4. Chor

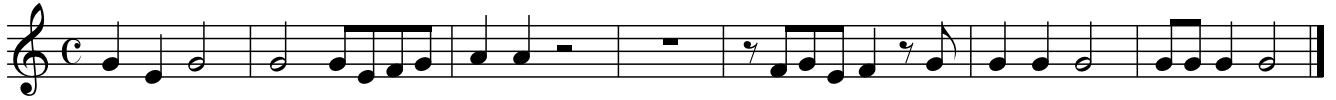
Musical score for Violino 2, 4. Chor, measures 1-26. The score is written in treble clef with a common time signature (C). The key signature has one sharp (F#). The score consists of six staves of music. The first staff (measures 1-4) begins with a treble clef, a common time signature, and a key signature of one sharp. The second staff (measures 5-8) continues the melody. The third staff (measures 9-13) continues the melody. The fourth staff (measures 14-20) features a double bar line at measure 14, followed by a measure with a fermata and a second measure with a fermata, both marked with a '2' above them. The fifth staff (measures 21-25) continues the melody. The sixth staff (measures 26) concludes the piece with a double bar line.

Ich will singen von der Gnade des Herrn

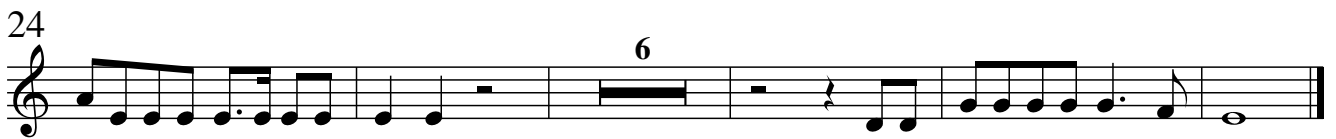
1. Intrada

Violino 3

Wolfgang Carl Briegel



2. Soli/ Chor



3. Arioso



4. Chor



Ich will singen von der Gnade des Herrn

1. Intrada

Viola 1

Wolfgang Carl Briegel



2. Soli/ Chor



24



3. Arioso



5



4. Chor



6



18



25



Ich will singen von der Gnade des Herrn

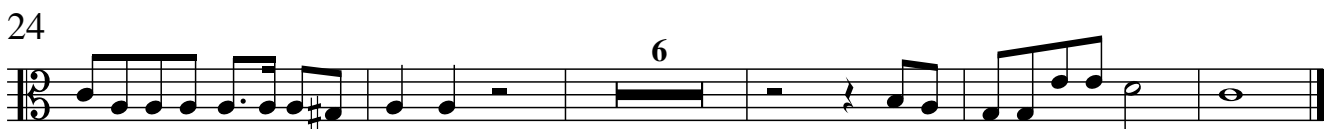
1. Intrada

Viola 2

Wolfgang Carl Briegel



2. Soli/ Chor



3. Arioso



4. Chor

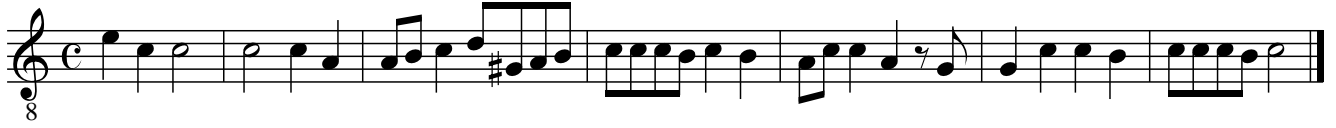


Ich will singen von der Gnade des Herrn

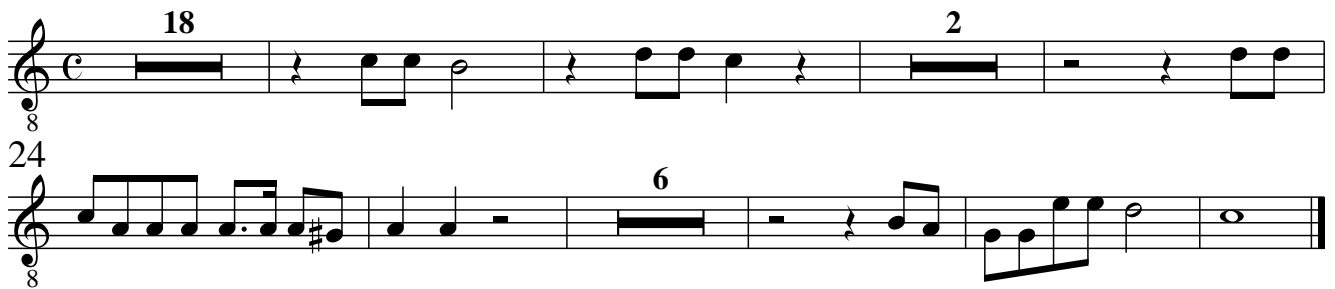
1. Intrada

Violino ottava/ Violotta

Wolfgang Carl Briegel



2. Soli/ Chor



3. Arioso



4. Chor



Ich will singen von der Gnade des Herrn

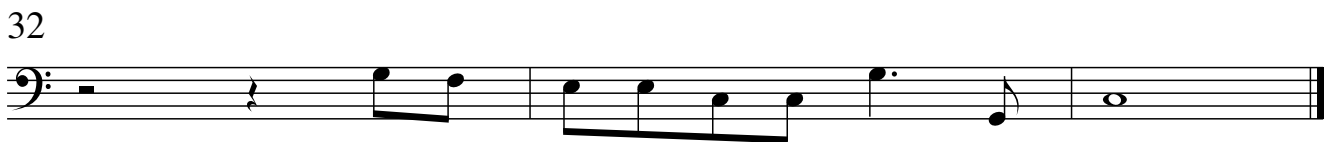
1. Intrada

Violoncello/ Violone

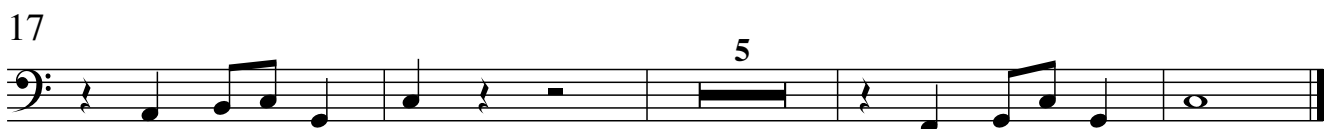
Wolfgang Carl Briegel



2. Soli/ Chor



3. Arioso



4. Chor

