

Ariosti, Attilio

Canzona „O quam suavis“

Für Ten. solo con strom.

Part.

Orig.-Hs. v. Zelenka

Ariosti, Attilio

Canzona „O quam suavis“

Für Ten. solo con strom.

Part.

~~Aut.~~

Musica

2156

E | 1

Datum	Name, Stand und Wohnung des Benutzers	Ort der Benutzung

[Handwritten signature]

ffⁿ 2.

Canata.

O Quam suavis.

Tenore Solo.

Violini 2

oboe 2

Viola

Basso Continuo

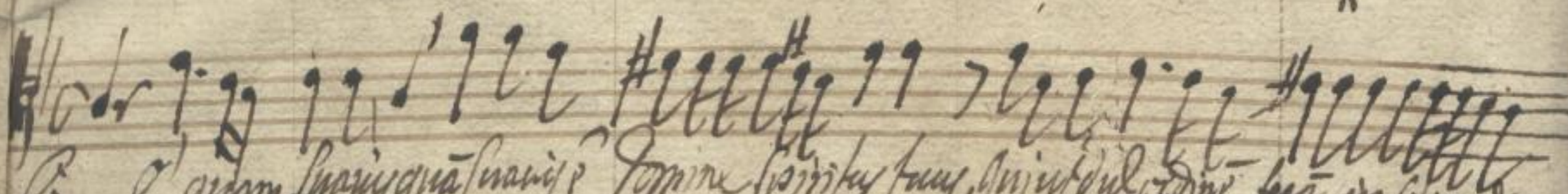
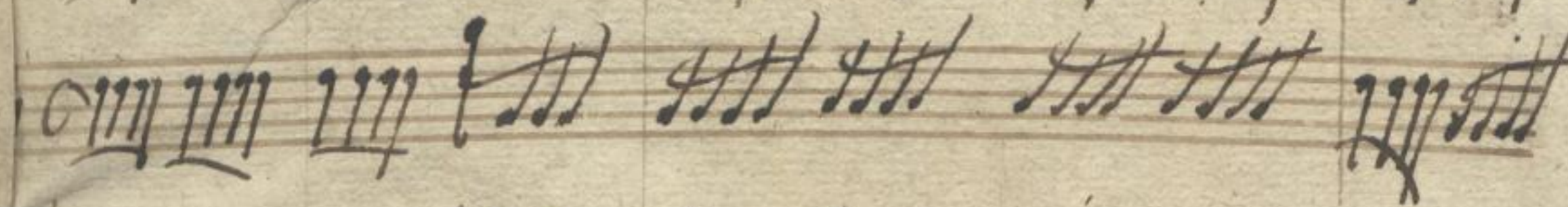
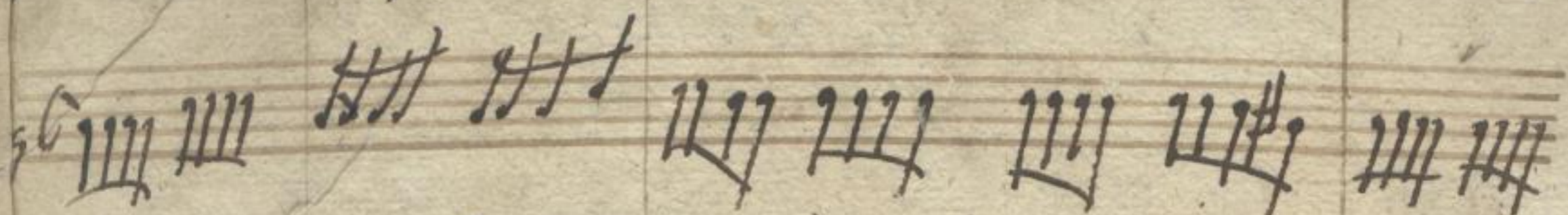
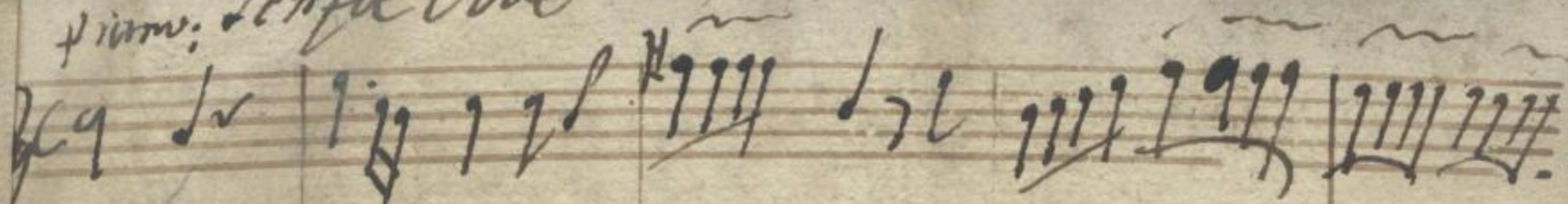
Alto Arioso.

Mus. 2156-E-1

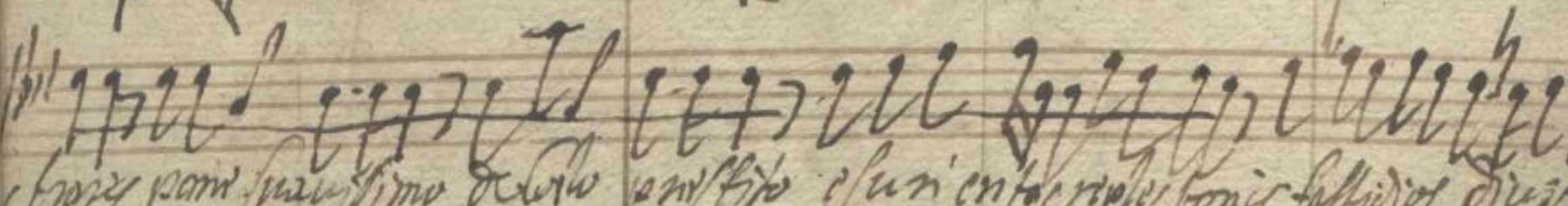
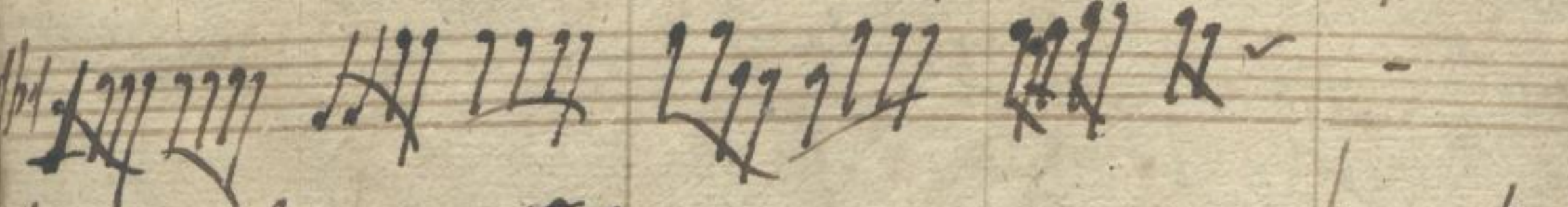
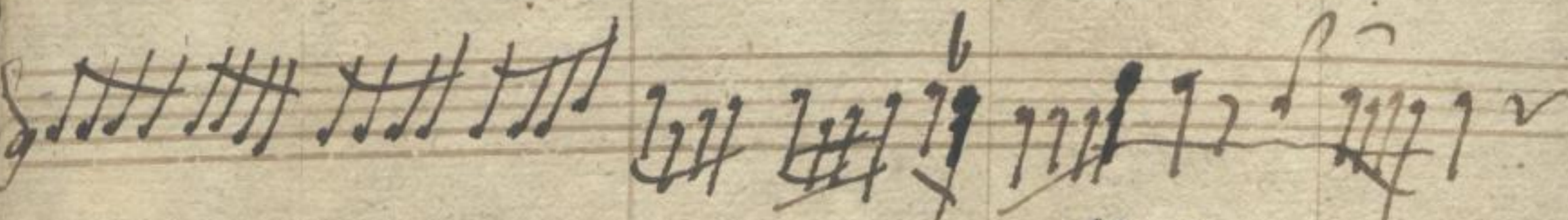
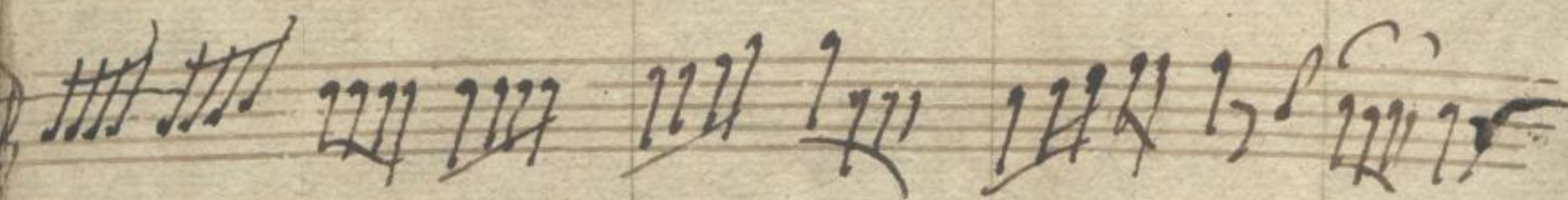
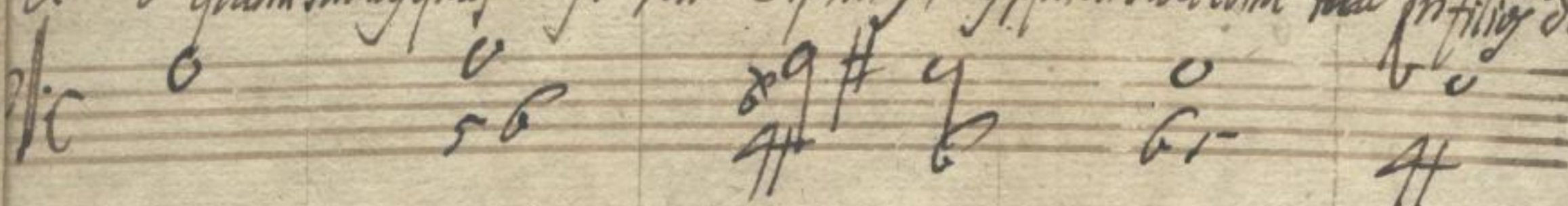
1

2

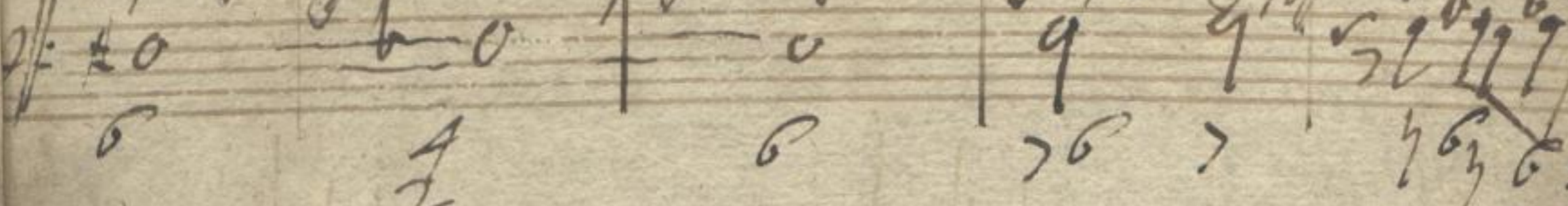
prim. Senza Oboè



Quisquam suavis quae suavis? Formae spiritus tuus, spiritus dulcedine tua in filio demor



Et nonne panem suavisimo delecto perficitis esurientes replet bonis fastidios praestis



Adagio:

Vcllo. unison.

Oboe Unif.

mitte in 2. part.

Andante

Panem quē vult dāt non sēminat mēu cor

3 4

Handwritten musical notation on three staves. The top staff uses a treble clef and contains a complex melodic line with many sixteenth notes. The middle and bottom staves use a bass clef and contain a more rhythmic accompaniment with eighth and sixteenth notes.

Pa mi qui lobu dat non sperne mitor, pmi qui lobu dat non

Handwritten musical notation on a single staff with a treble clef, featuring a series of rhythmic patterns with eighth and sixteenth notes.

Handwritten musical notation on a single staff with a treble clef, showing a dense melodic passage with many sixteenth notes.

Handwritten musical notation on two staves. The top staff has a treble clef and the bottom staff has a bass clef. Both contain rhythmic accompaniment with eighth notes.

Sperne mitor non
pa mi qui lobu dat n sperne mitor non

Handwritten musical notation on a single staff with a treble clef, featuring a series of rhythmic patterns with eighth and sixteenth notes.

Andante *Forse*

Spigne mi u cor pome q' belidat non spigne mena pome spigne mi u cor.

En manna ju

5

6

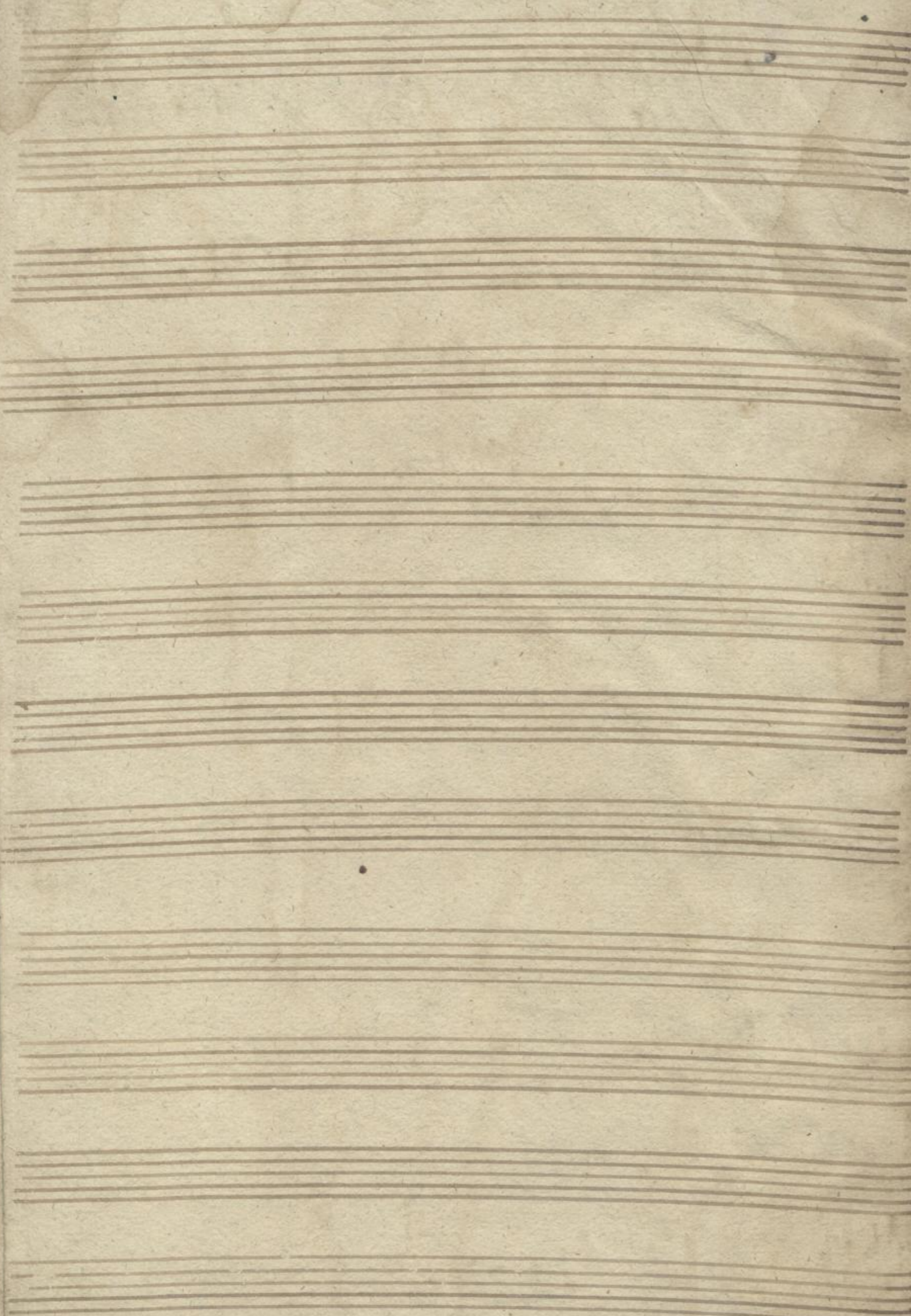
non tibi huius dulcor *est manna superat tibi huius dulcor tibi huius dulcor*

Palazzo

manna superat tibi huius dulcor tibi huius dulcor

7

6



(anhang 173c) Mis. $\frac{2156}{811}$

