

Liò E. mo. Inna

del sign: Tomella

sejue

sejue

Allo

Mus. 3032-F-4, 11

1

A handwritten musical score on aged paper, featuring multiple staves. The top two staves contain complex melodic lines with many beamed notes. Below these are several empty staves. The lower section of the page contains a vocal line with lyrics written in cursive. The lyrics are: "spera do strat pia gato Leone iratoe fre Crome". The word "Crome" is written on a separate line below the first part of the lyrics. The musical notation includes various note values, rests, and dynamic markings like "p." and "f".

Handwritten musical notation on a five-line staff, featuring various note values and rests.

me medita mille in rienne straggi scorrendo il prato scor

p Cto
for

rendo il prato e fa col suo rugito dalle smarr - rite bela en / che attando

Cto for

nat

Crome

Go

Le selue

abbando

Set, *Crescendo* *f* *mv*

nar Le selue — ab bandonar

Inenato Serat piayato Leone irato e fre

The image shows a page of handwritten musical notation. It features a vocal line with lyrics and a piano accompaniment. The lyrics are: "nar Le selue — ab bandonar" and "Inenato Serat piayato Leone irato e fre". The score includes dynamic markings such as "Crescendo", "f", and "mv". The notation is in a single system with multiple staves. The paper shows signs of age and wear.

me medita mille insieme straggi scorrendo il

grato scorrendo il grato e fa col suo rugire

dal marite smar

Handwritten musical notation on two staves. The top staff contains a melodic line with various note values and rests. The bottom staff contains a bass line with notes and rests.

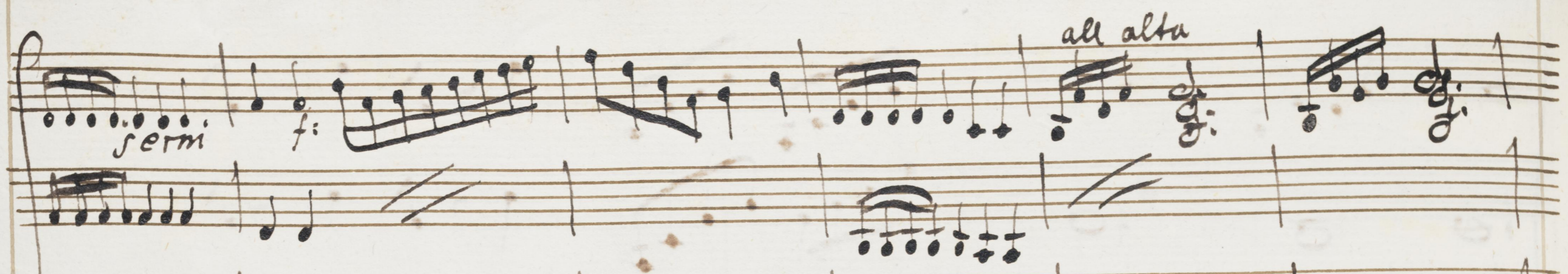
Handwritten musical notation with lyrics. The lyrics are written in a cursive hand below the notes. The notes are mostly quarter notes and eighth notes.

mi - re Deue le Deue abandonar

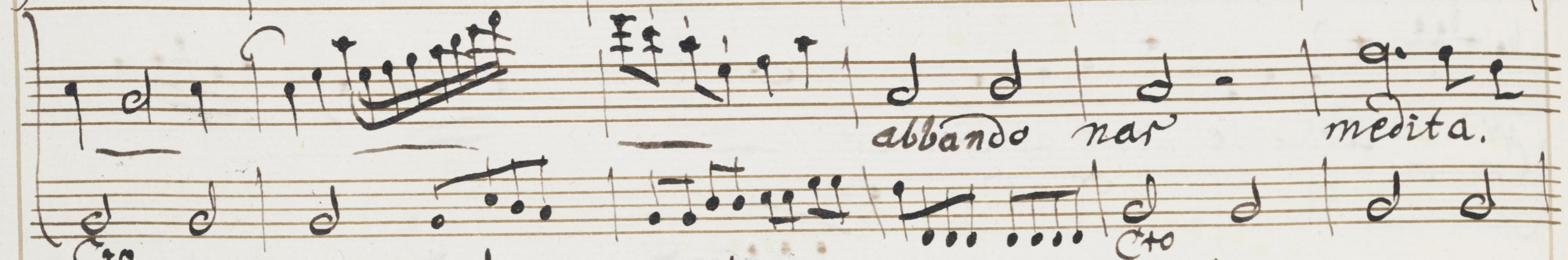
Handwritten musical notation on two staves. The top staff contains a melodic line with notes and rests. The bottom staff contains a bass line with notes and rests.

Handwritten musical notation on two staves. The top staff contains a complex melodic line with many notes and rests. The bottom staff contains a bass line with notes and rests.

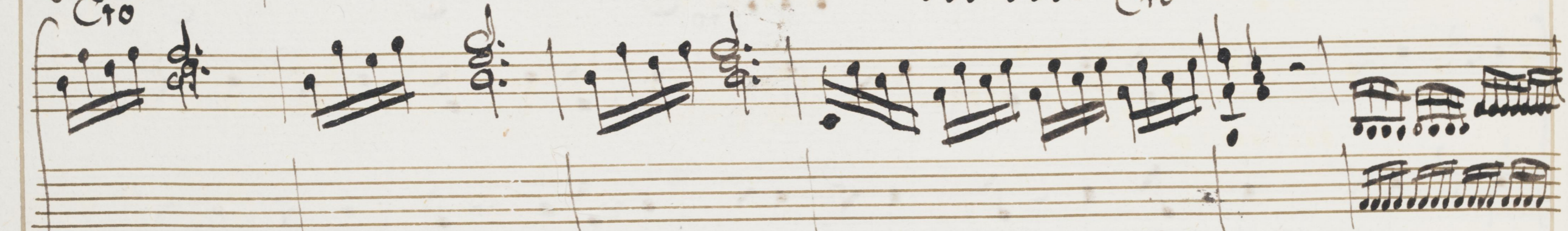
f *fermi* *f* *all'alta*



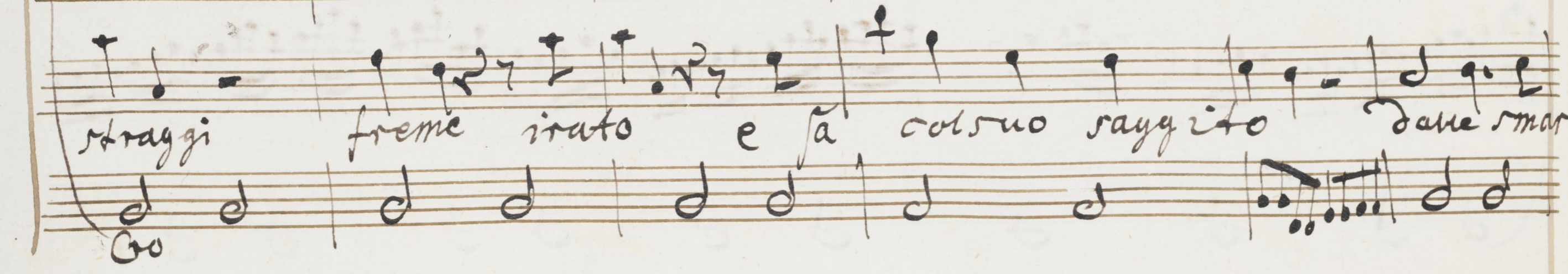
abbando *nar* *medita.*



Cto



straggi *freme* *irato* *e* *fa* *col suo* *raggito* *dare* *mar*



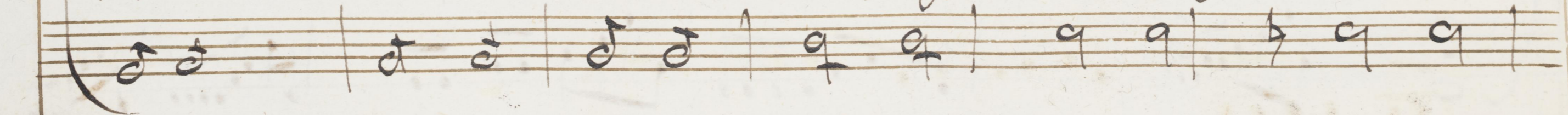
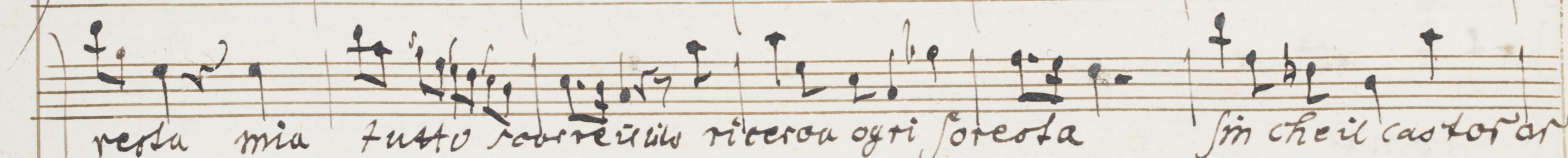
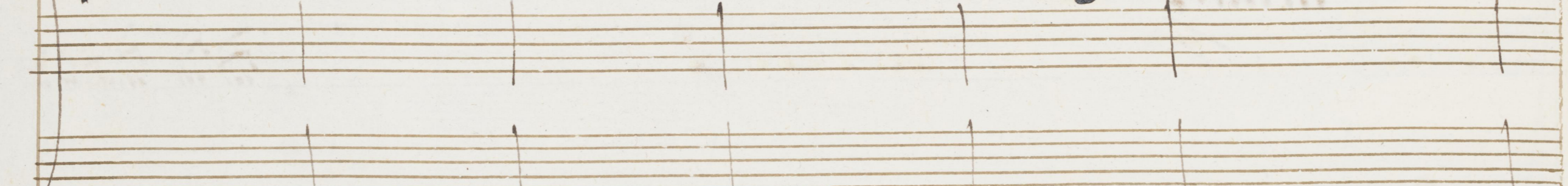
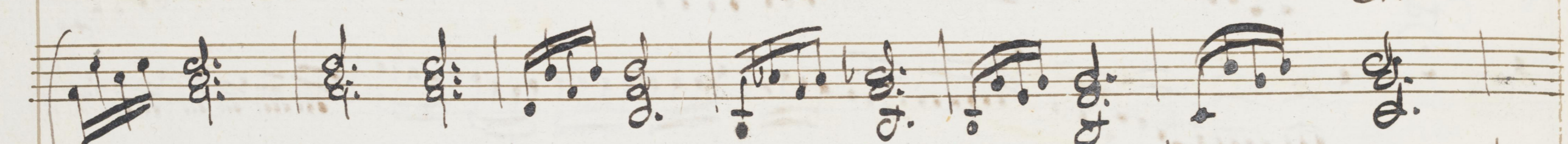
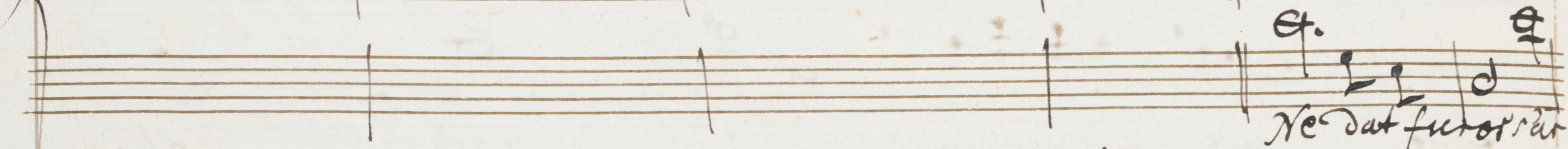
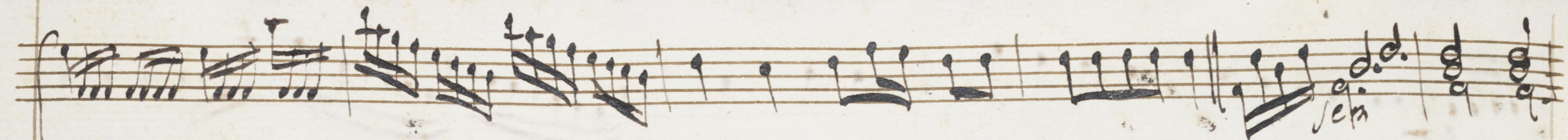
Handwritten musical notation on a five-line staff. The first measure contains a treble clef and a key signature of one flat. The music consists of a series of eighth and sixteenth notes, with some beamed groups. There are dynamic markings 'f' and 'sf' and a 'sem' marking. A double bar line is present after the second measure.

Handwritten musical notation on a five-line staff. The first measure contains a treble clef and a key signature of one flat. The music consists of a series of eighth and sixteenth notes, with some beamed groups. There are dynamic markings 'f' and 'sf' and a 'sem' marking. A double bar line is present after the second measure.

Handwritten musical notation on a five-line staff. The first measure contains a treble clef and a key signature of one flat. The music consists of a series of eighth and sixteenth notes, with some beamed groups. There are dynamic markings 'f' and 'sf' and a 'sem' marking. A double bar line is present after the second measure.

Handwritten musical notation on a five-line staff. The first measure contains a treble clef and a key signature of one flat. The music consists of a series of eighth and sixteenth notes, with some beamed groups. There are dynamic markings 'f' and 'sf' and a 'sem' marking. A double bar line is present after the second measure.

Handwritten musical notation on a five-line staff. The first measure contains a treble clef and a key signature of one flat. The music consists of a series of eighth and sixteenth notes, with some beamed groups. There are dynamic markings 'f' and 'sf' and a 'sem' marking. A double bar line is present after the second measure.



Visto mi trova e ancor l'ingiuria lieto a' ten di - car va lieta'

ven - di - car a' vendi - car'

A page of musical manuscript paper with 15 horizontal staves. The top staff contains faint, handwritten musical notation, including notes and stems. The remaining staves are mostly blank, with some very light, illegible markings. The paper is aged and slightly yellowed.

A partial view of the adjacent page on the right, showing musical notation on staves. The notation includes notes, stems, and clefs, continuing from the previous page.