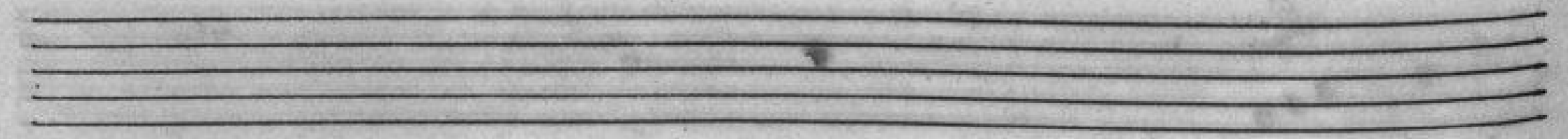
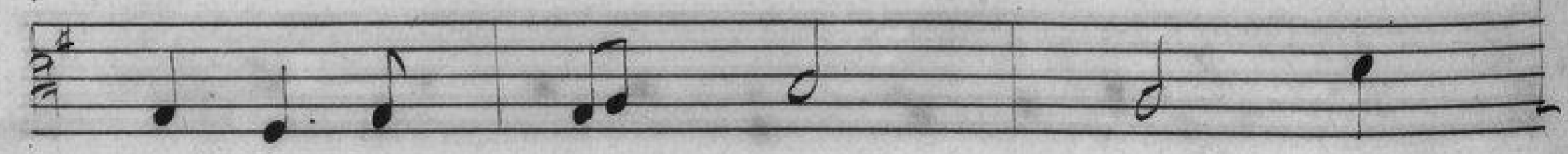
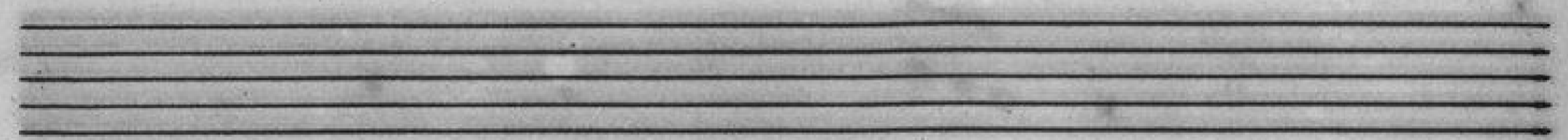
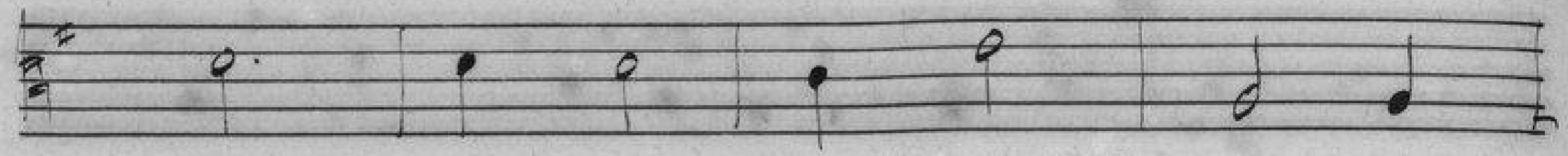
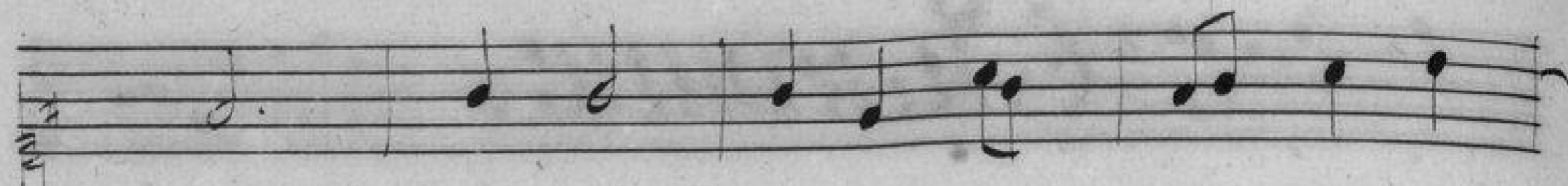
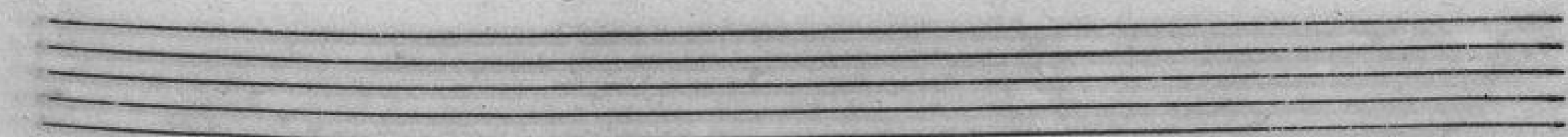
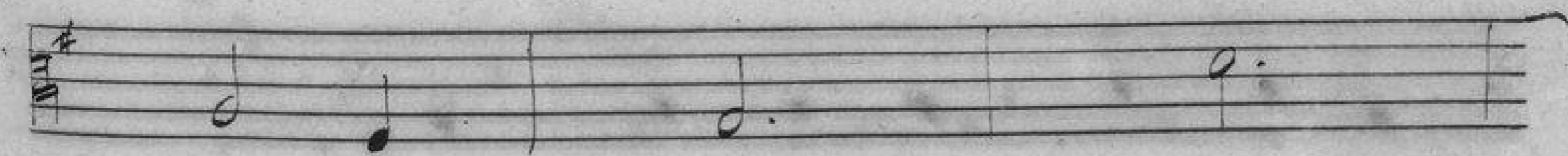
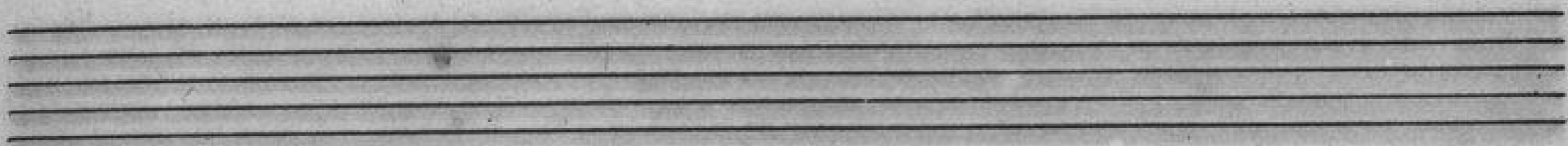
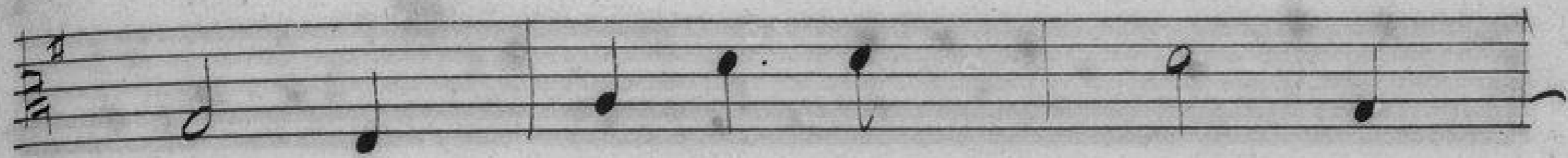


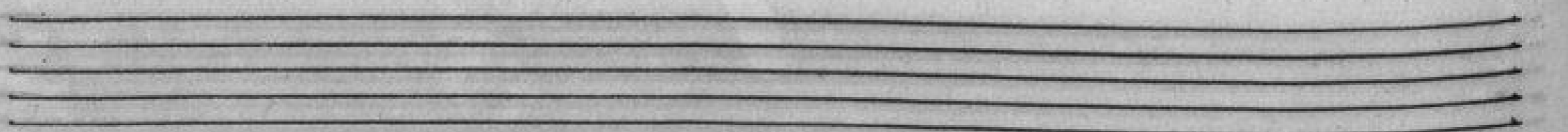
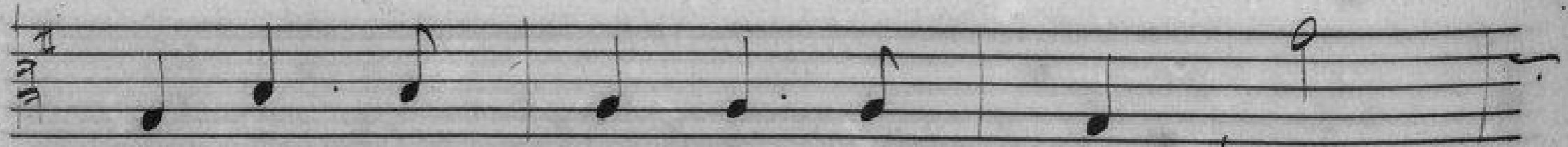
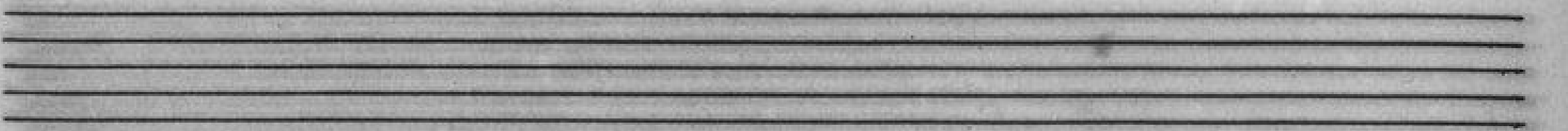
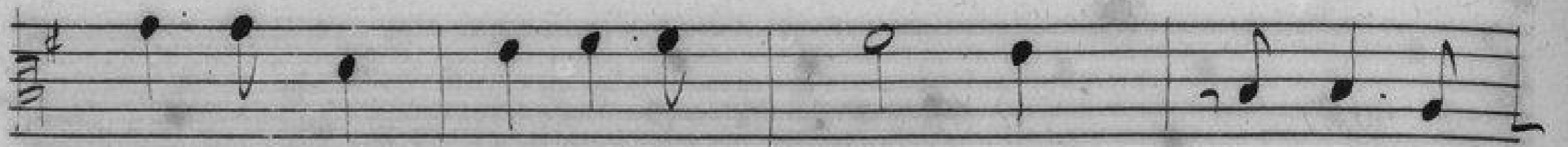
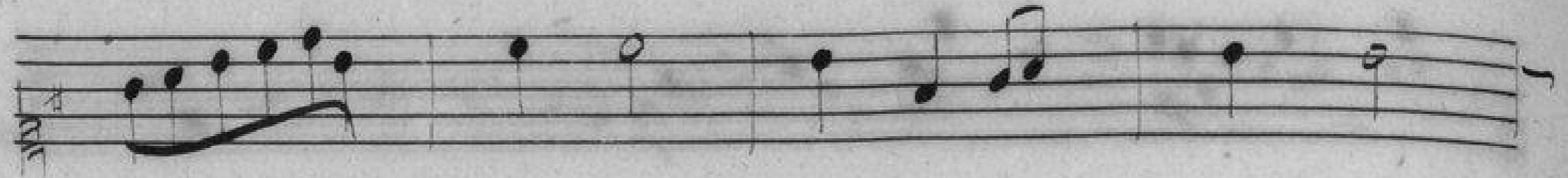
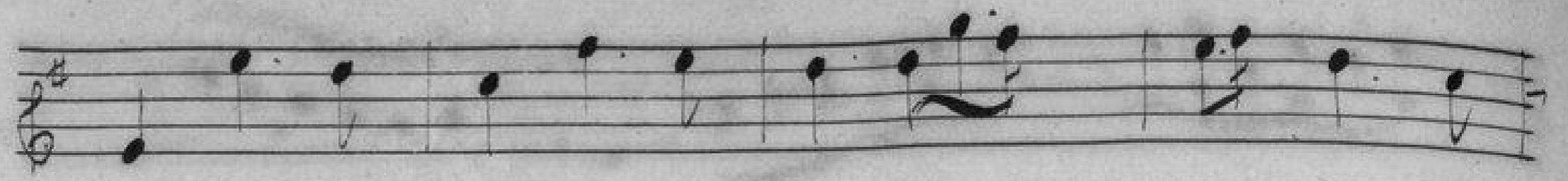
L'amour Medecin. 37

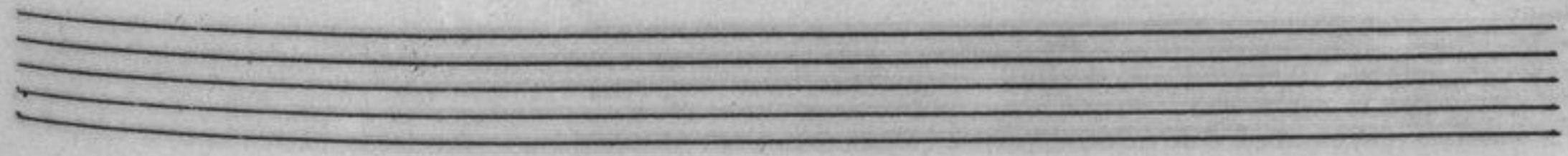
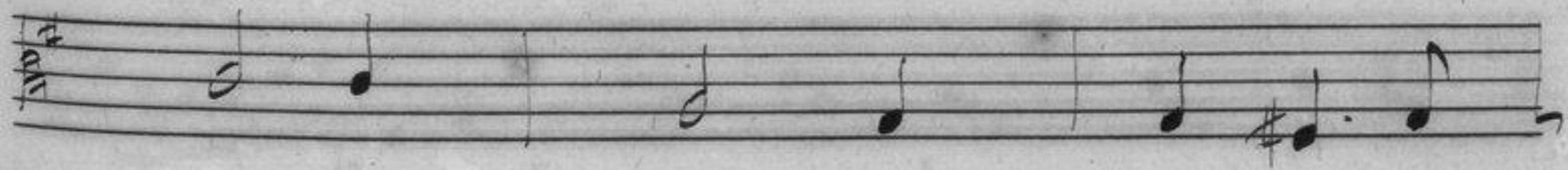
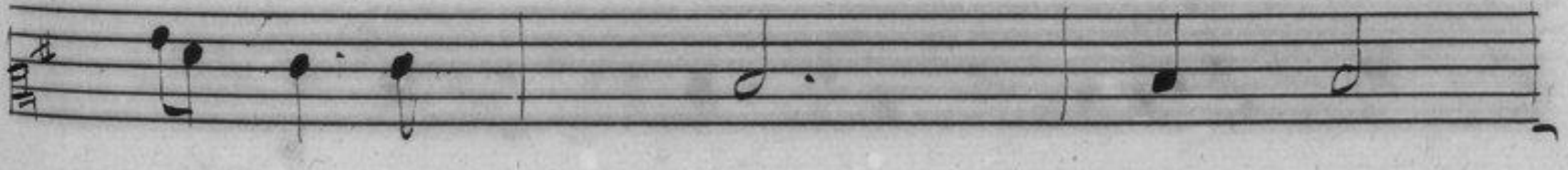
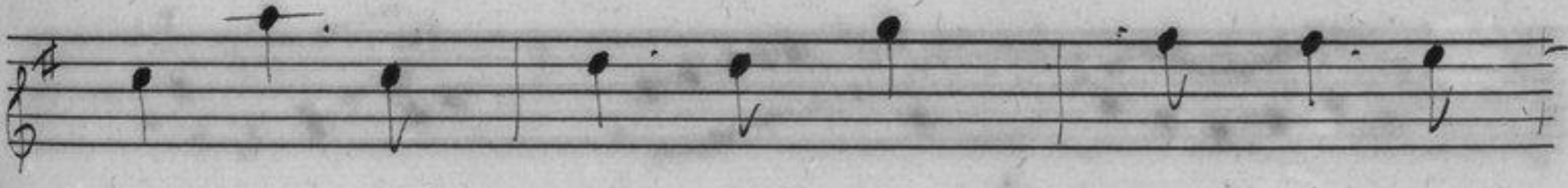
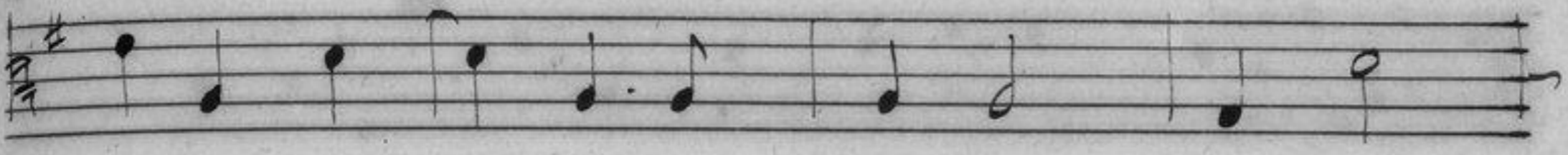
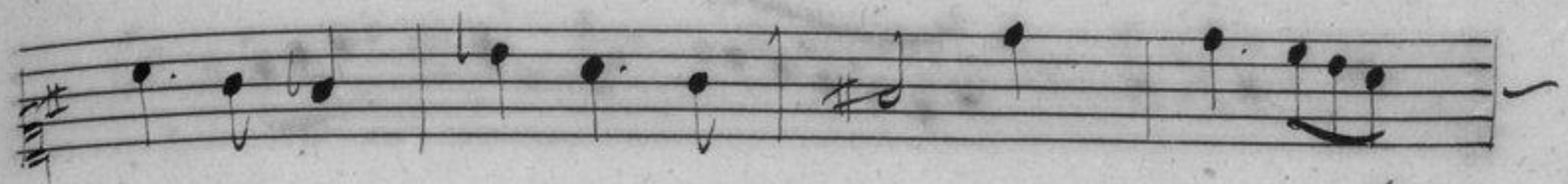
Chaconne.

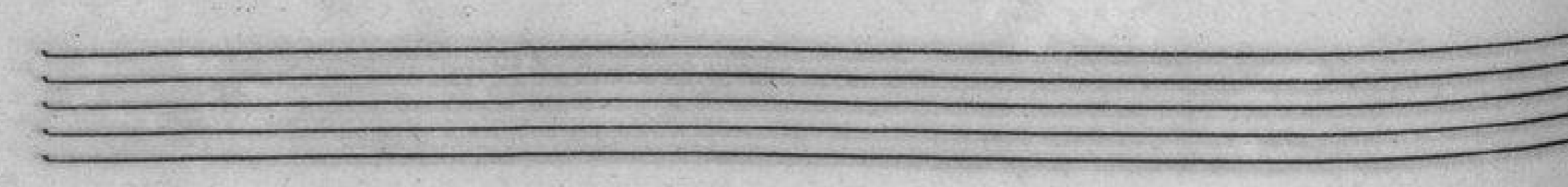
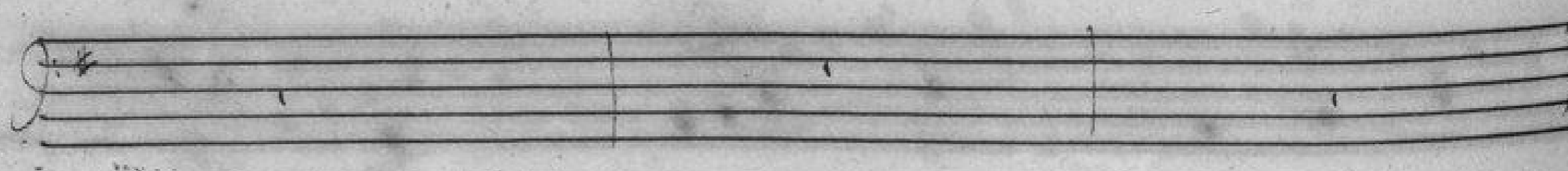
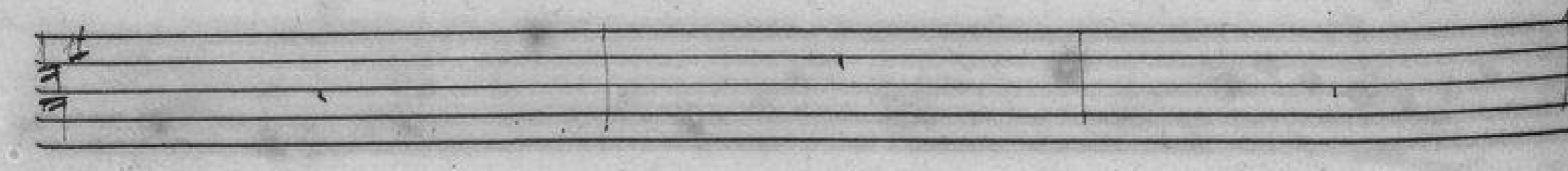
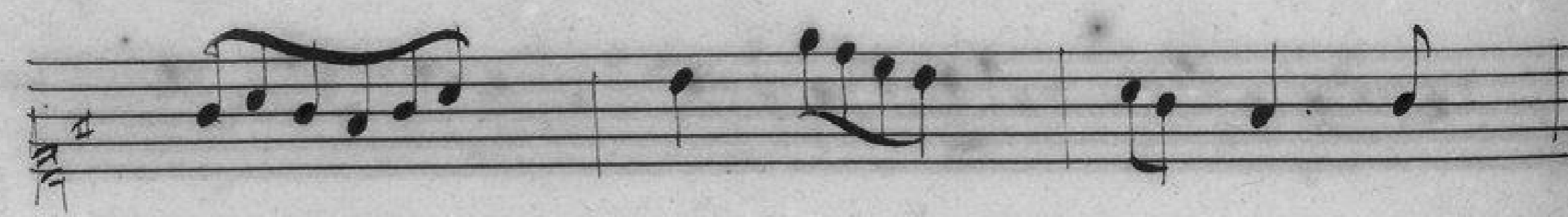
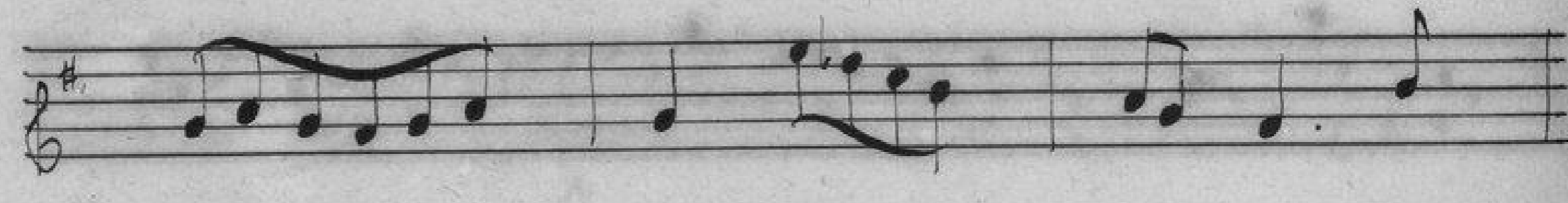
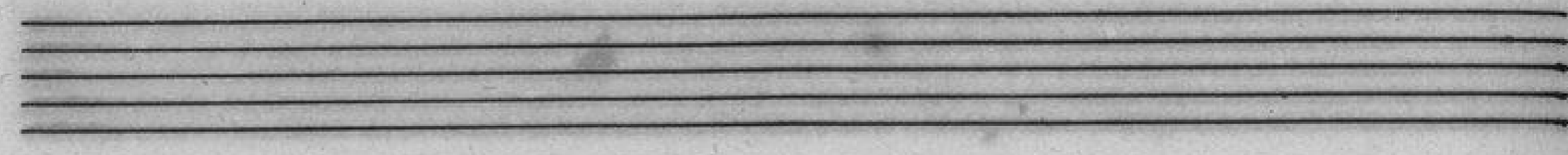
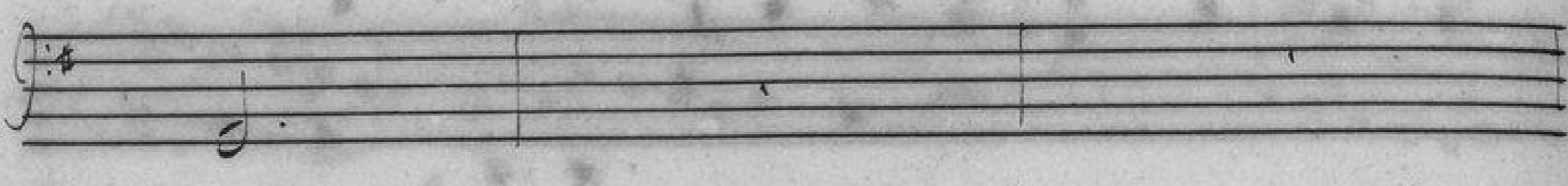
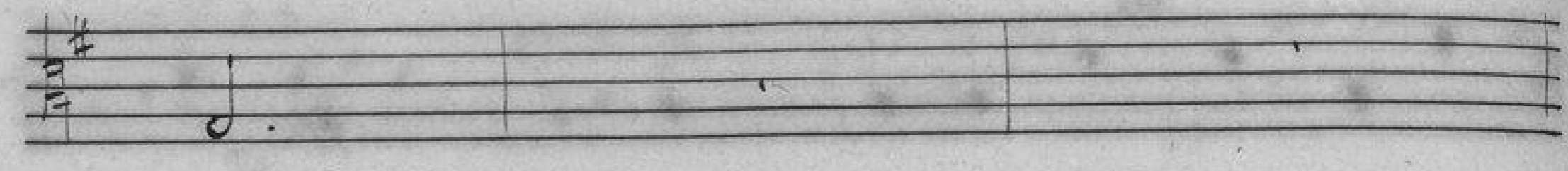
A handwritten musical score for a piece titled "L'amour Medecin. Chaconne." The score is written on ten staves. The first staff is a treble clef with a key signature of one sharp (F#) and a 3/4 time signature. The second staff is a bass clef with a key signature of one sharp (F#). The third and fourth staves are also bass clefs with a key signature of one sharp (F#). The fifth staff is a bass clef with a key signature of one sharp (F#) and a 3/4 time signature. The sixth staff is a bass clef with a key signature of one sharp (F#) and a 6/8 time signature. The seventh staff is a treble clef with a key signature of one sharp (F#). The eighth, ninth, and tenth staves are bass clefs with a key signature of one sharp (F#). The score includes various musical notations such as notes, rests, and clefs. There are some handwritten annotations, including "A6" written above a note in the sixth staff and another "A6" above a note in the tenth staff. The paper shows signs of age and wear.

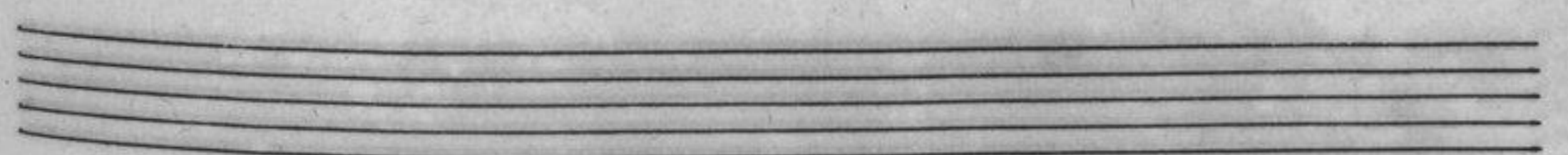
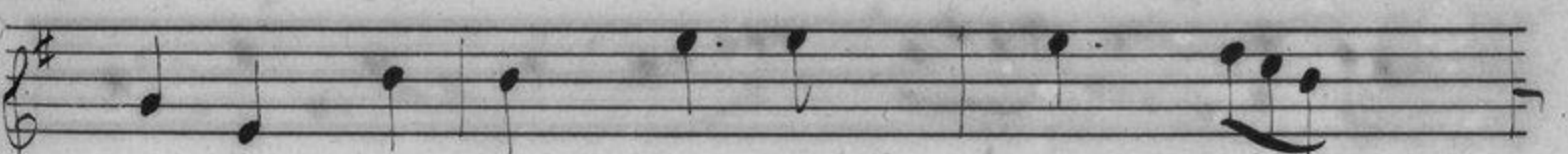
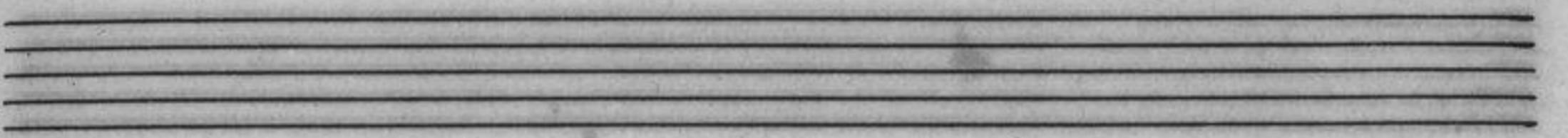
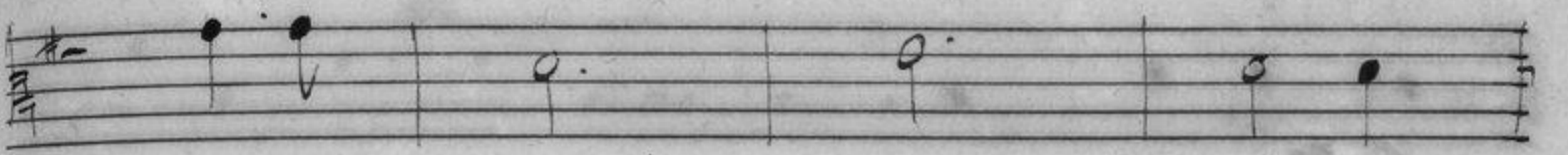
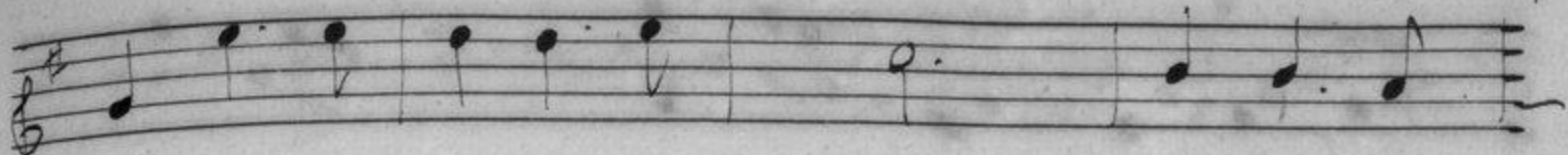












Handwritten musical notation on five staves. The first four staves contain notes and rests, while the fifth staff has some notes and rests with additional markings.

Handwritten musical notation on five staves. The first four staves contain notes and rests, while the fifth staff has some notes and rests with additional markings.

Two empty musical staves.

Two empty musical staves.

Handwritten musical notation on a single staff.

Handwritten musical notation on a single staff.

Handwritten musical notation on a single staff.

Handwritten musical notation on a single staff.

Handwritten musical notation on a single staff.

Handwritten musical notation on a single staff.

Two empty musical staves.

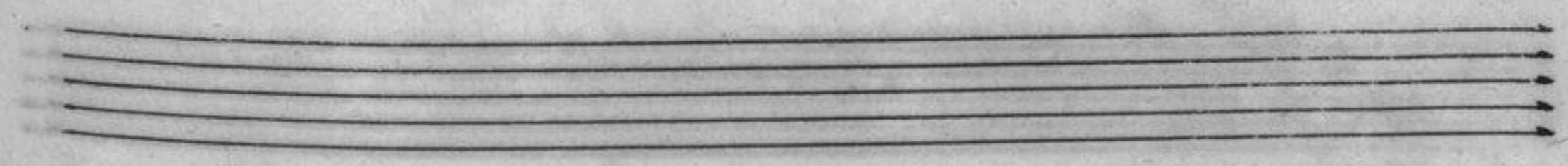
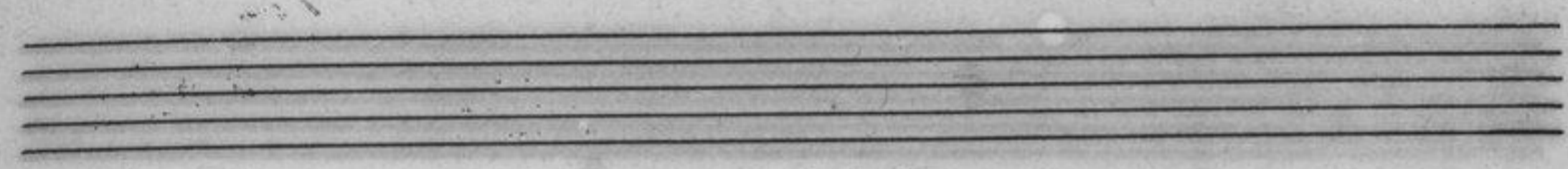
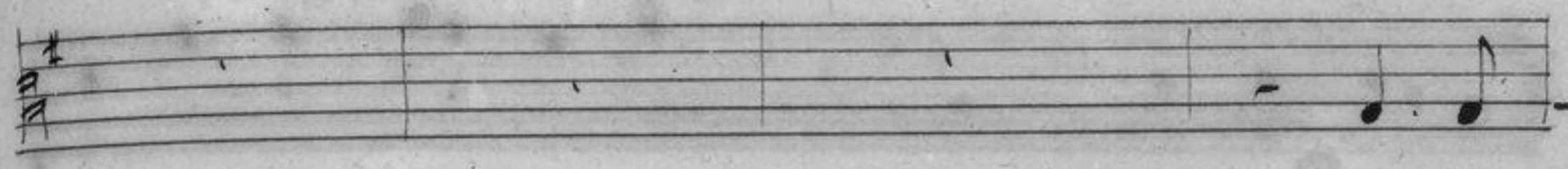
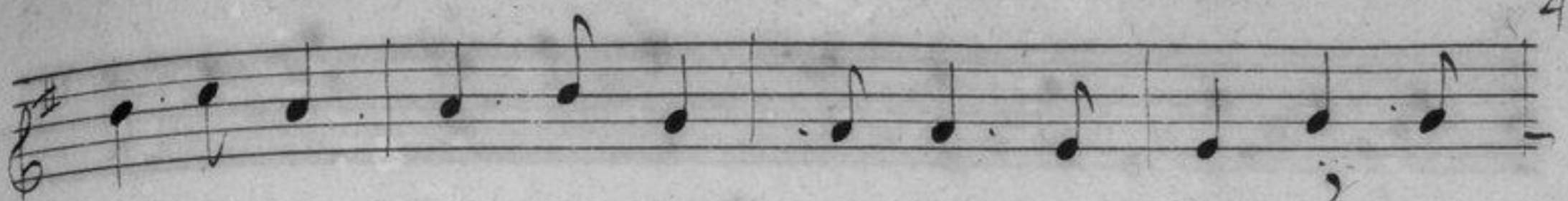
Two empty musical staves.

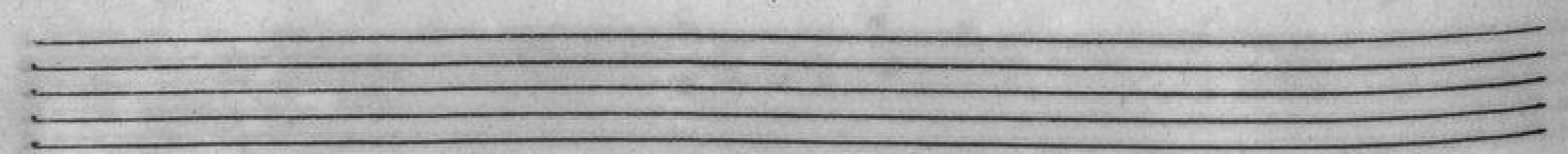
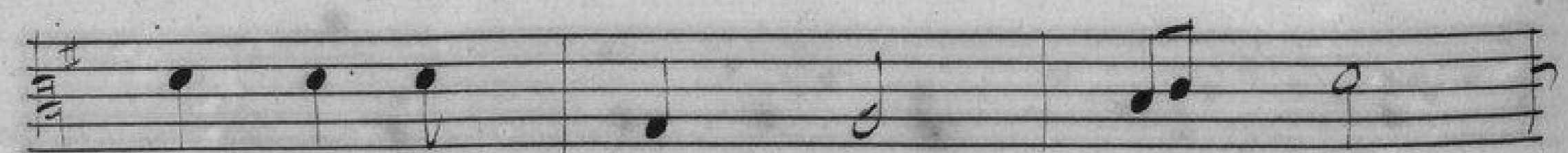
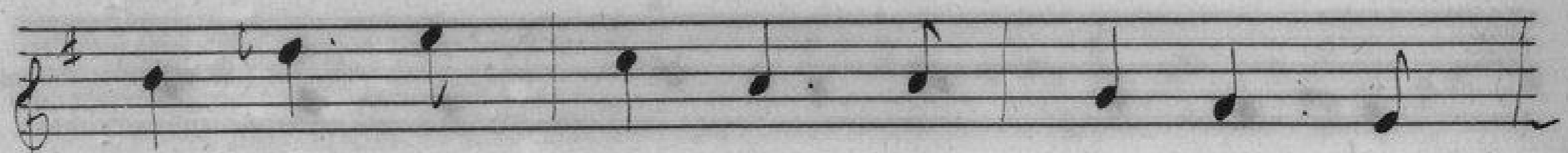
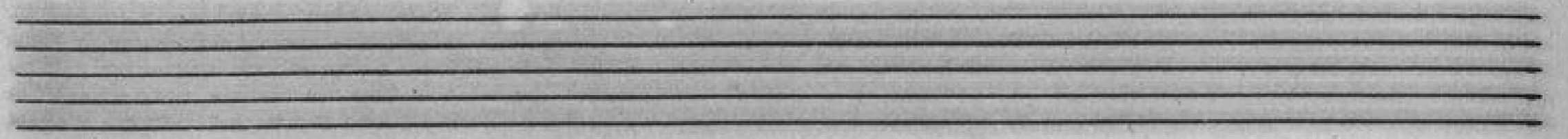
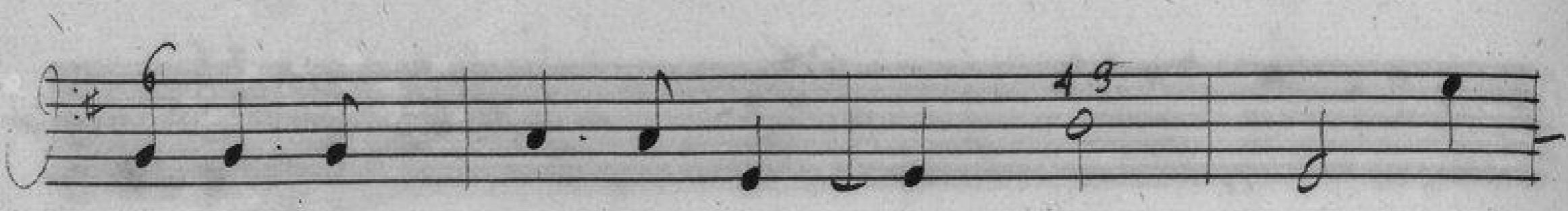
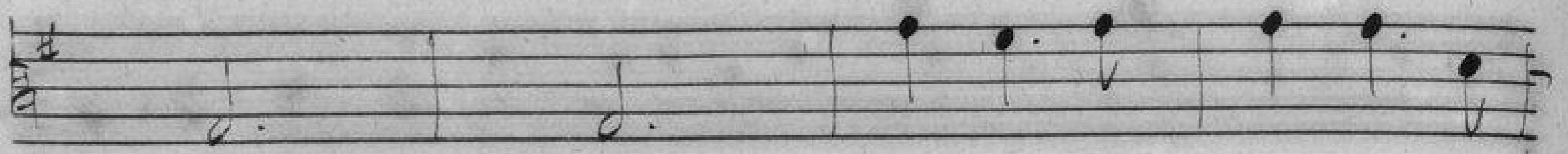
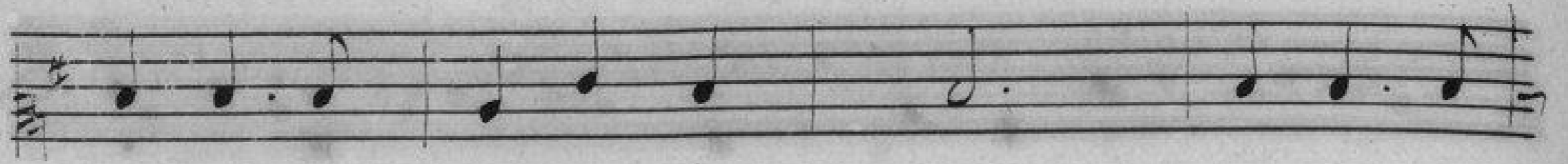
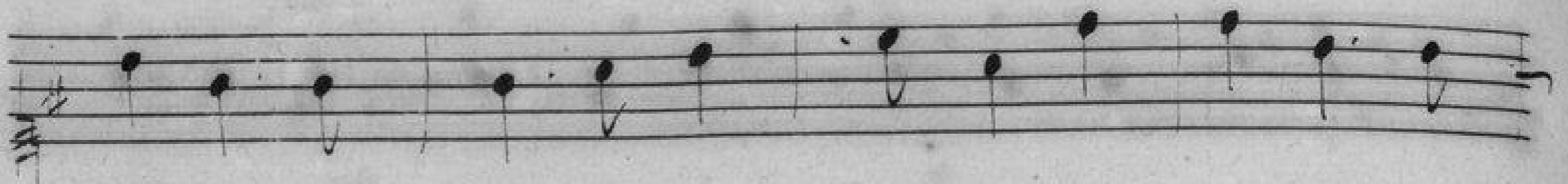
Handwritten musical notation on a single staff.

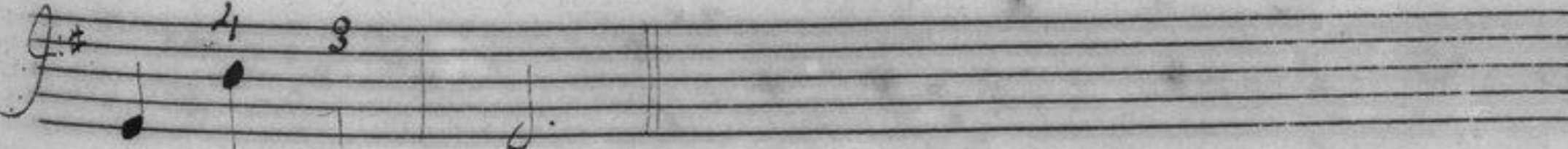
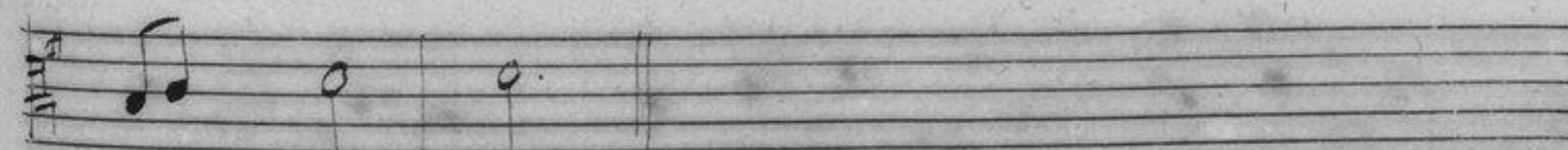
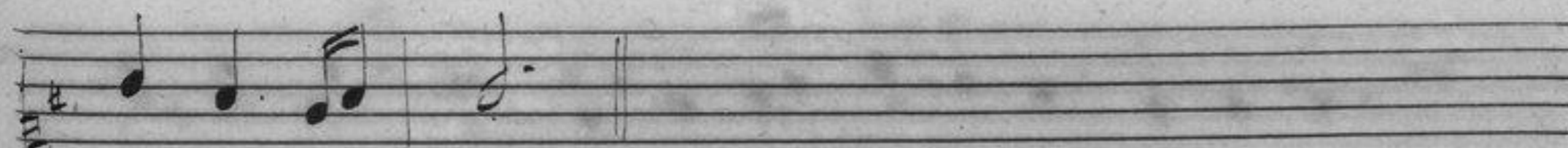
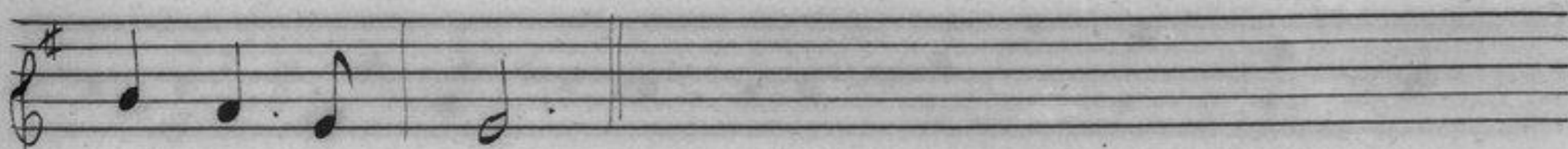
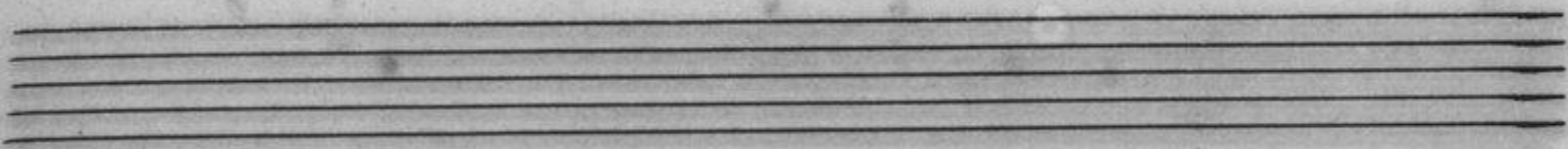
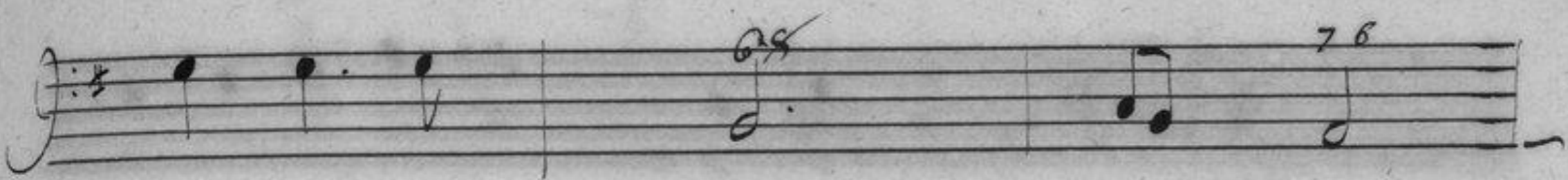
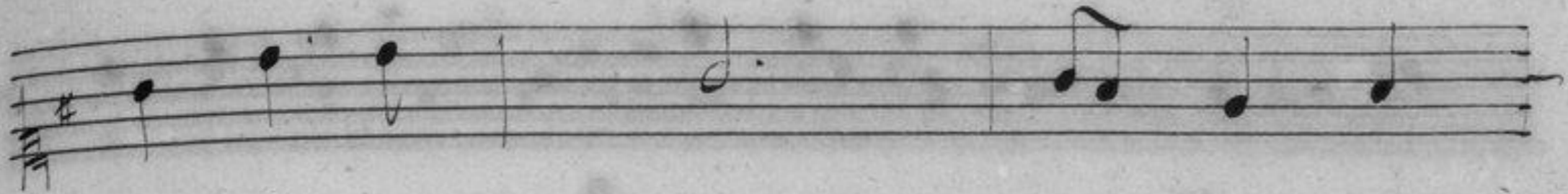
Handwritten musical notation on a single staff.

Two empty musical staves.

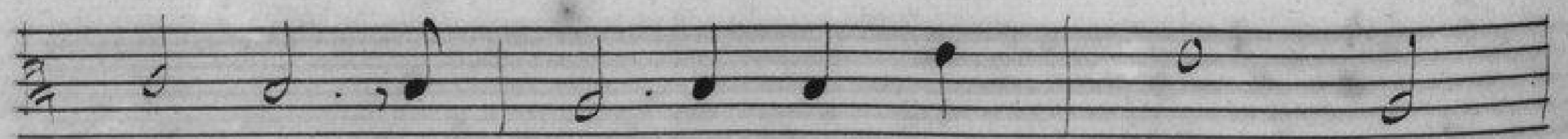
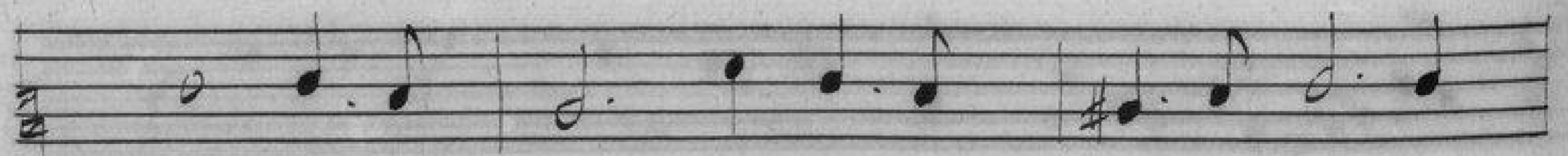
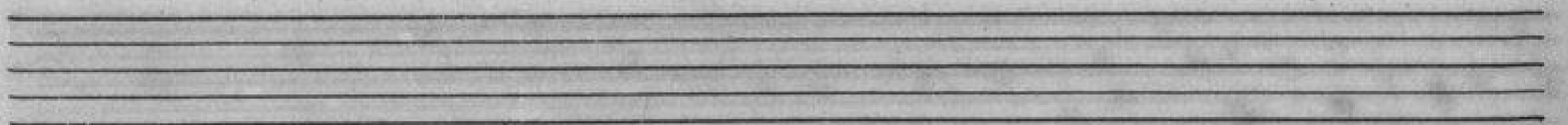
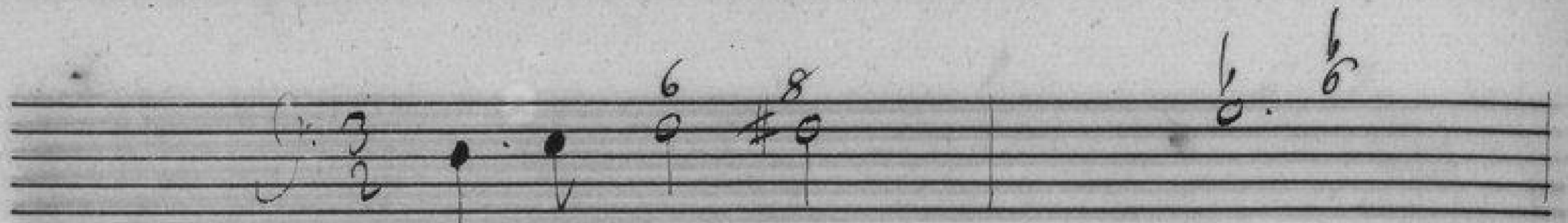
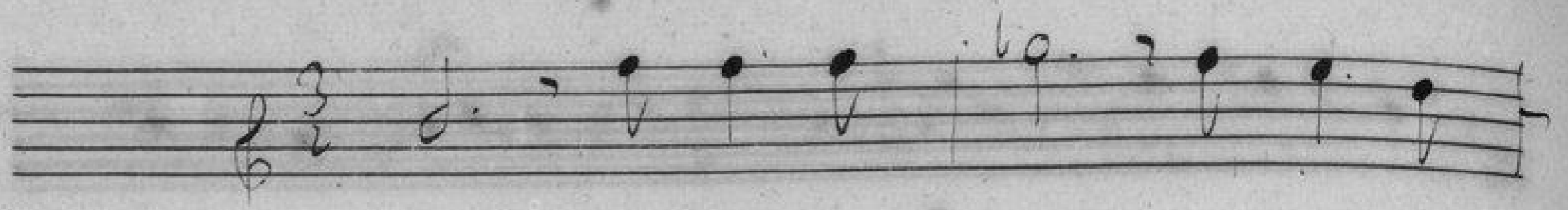
Two empty musical staves.

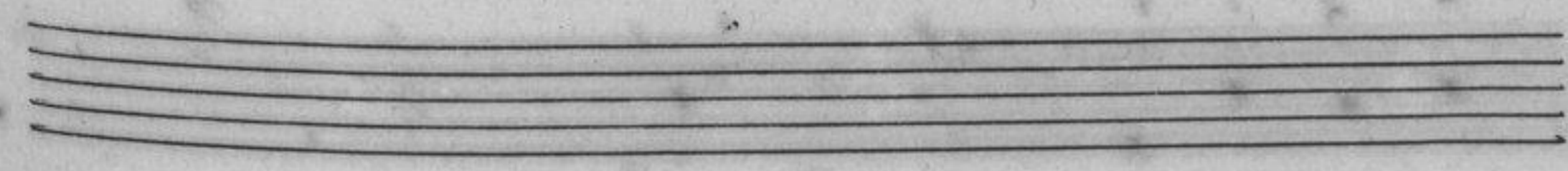
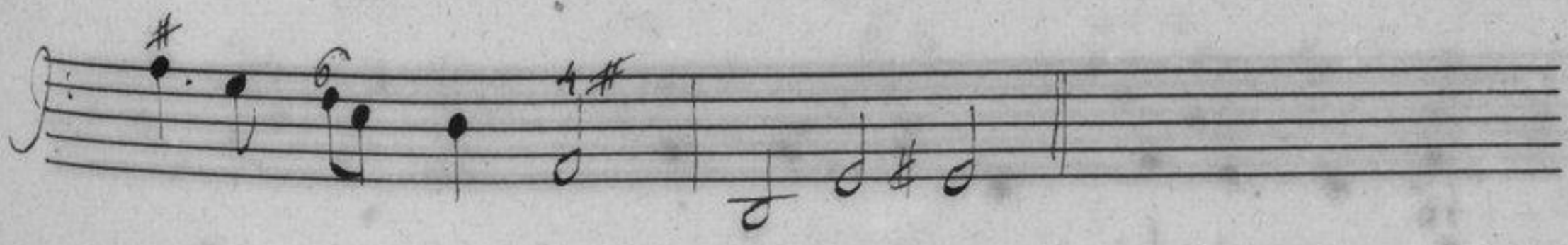
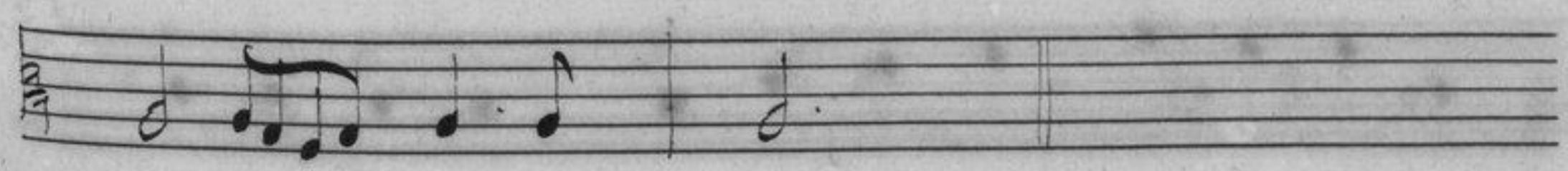
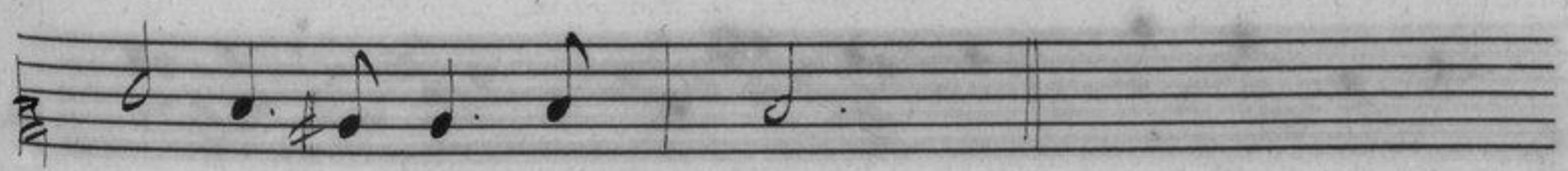
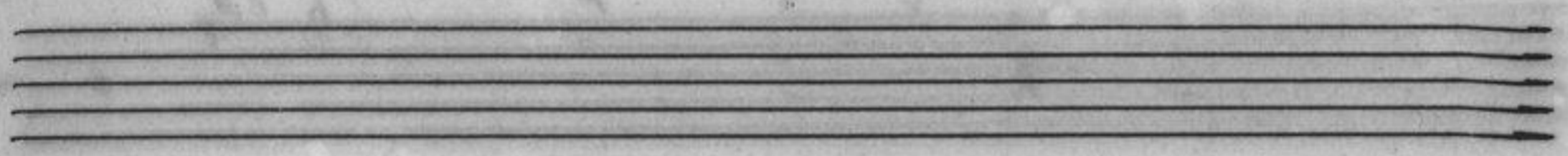
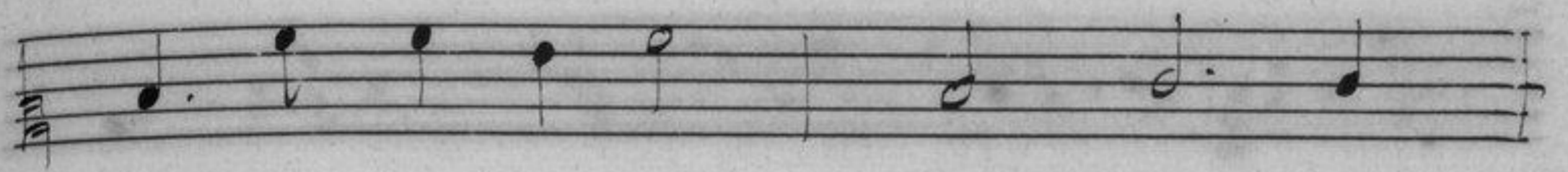
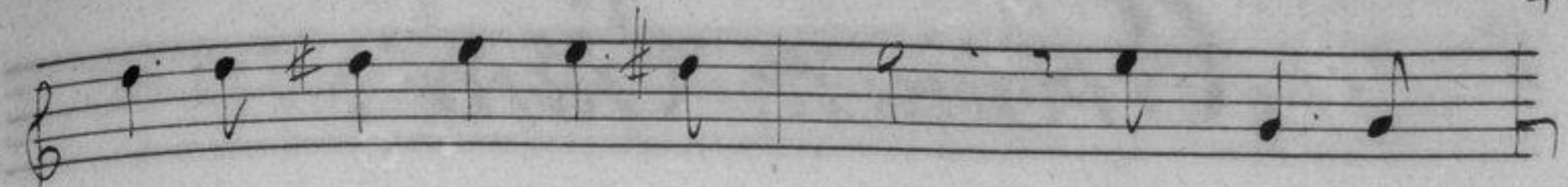




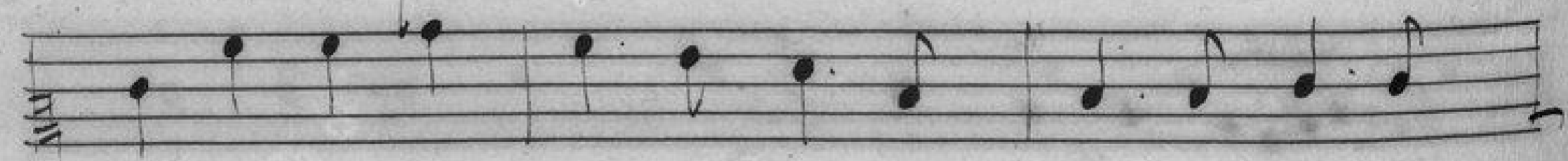
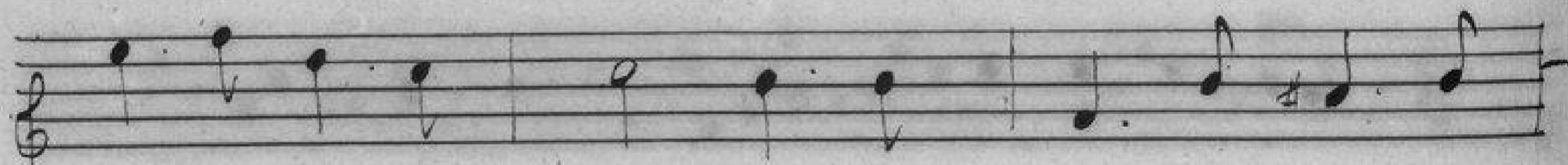
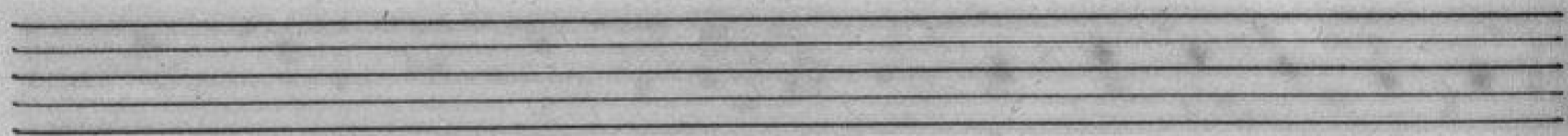
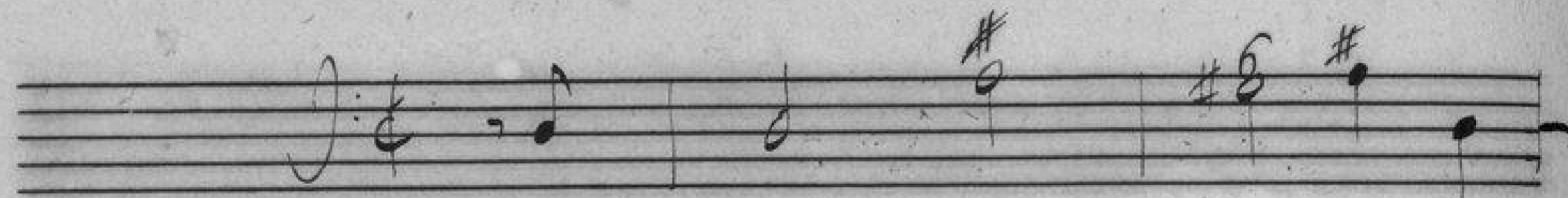
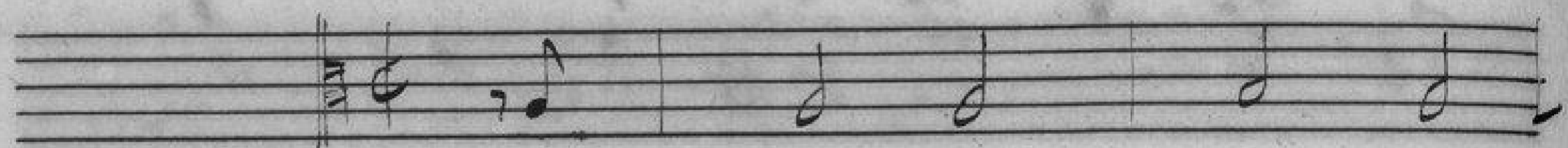
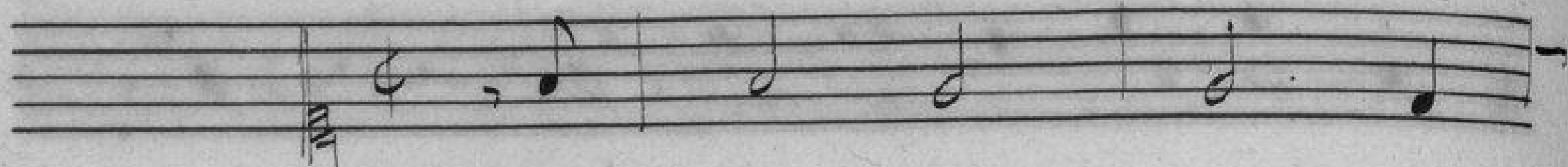


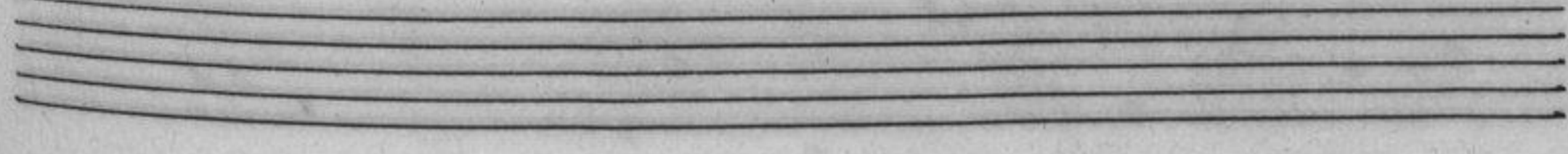
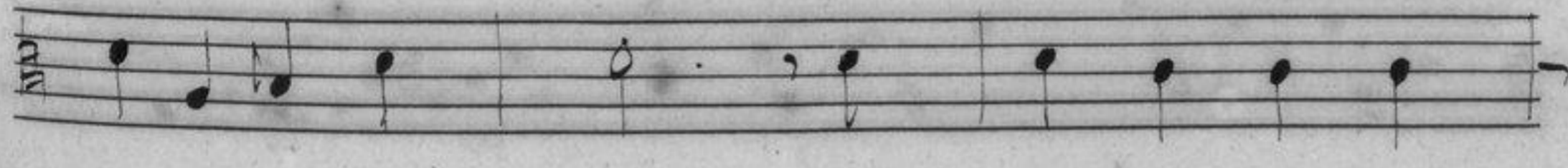
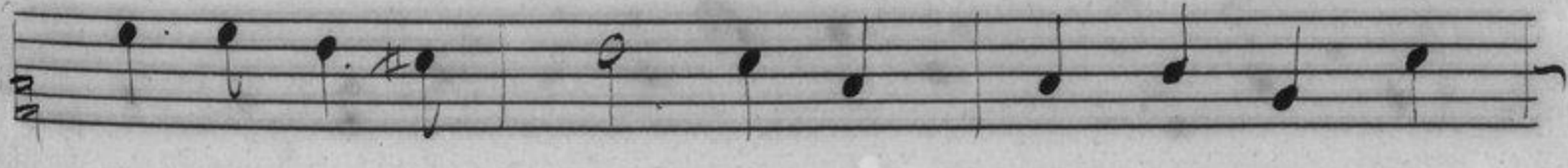
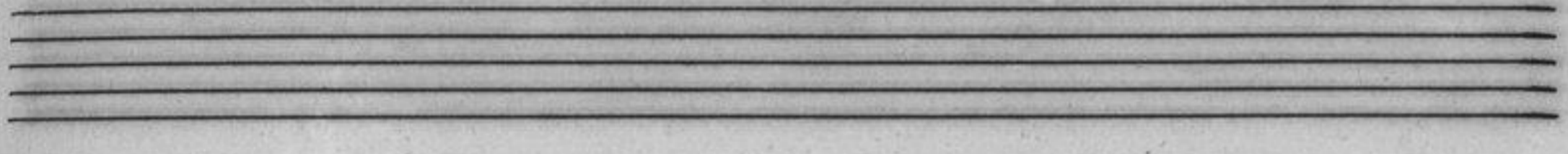
Le Valet d'un Bourgeois.





Premiere Entrée.





Handwritten musical notation on a single staff, featuring a treble clef and a series of eighth and quarter notes.

Handwritten musical notation on a single staff, featuring a bass clef and a series of eighth and quarter notes.

Handwritten musical notation on a single staff, featuring a bass clef and a series of eighth and quarter notes.

Handwritten musical notation on a single staff, featuring a bass clef and a series of eighth and quarter notes.

Handwritten musical notation on a single staff, featuring a treble clef. The number "43" is written above the first measure. The notation includes eighth and quarter notes.

Empty musical staff.

Handwritten musical notation on a single staff, featuring a treble clef and a series of eighth and quarter notes.

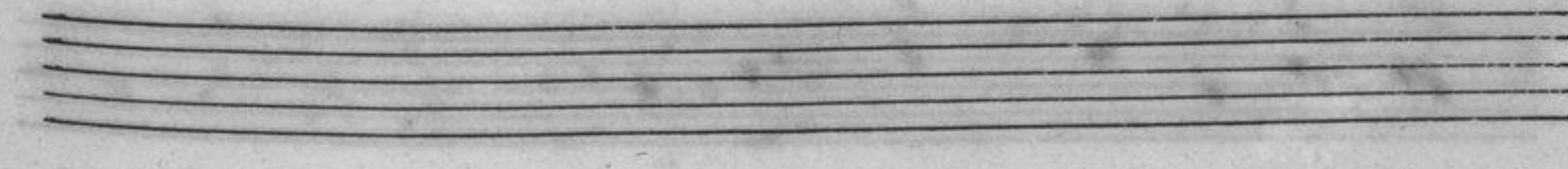
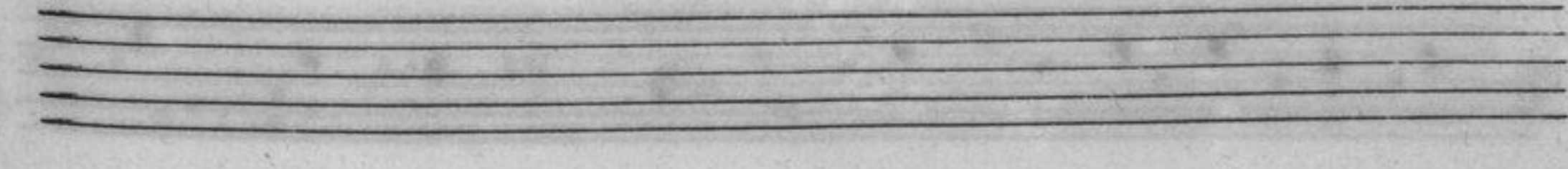
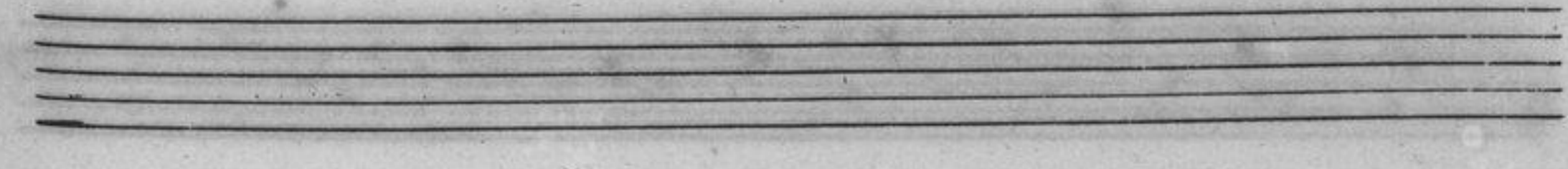
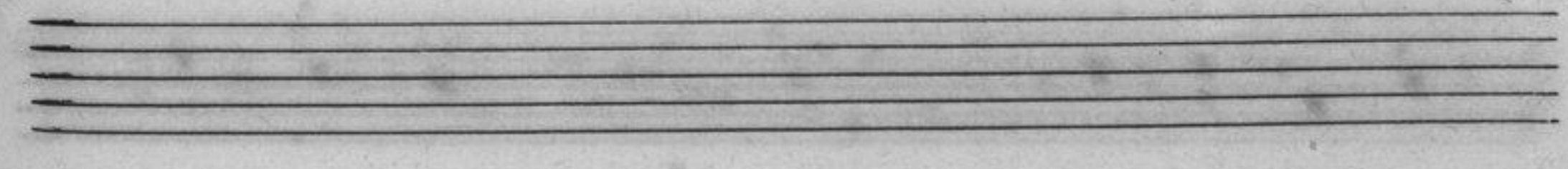
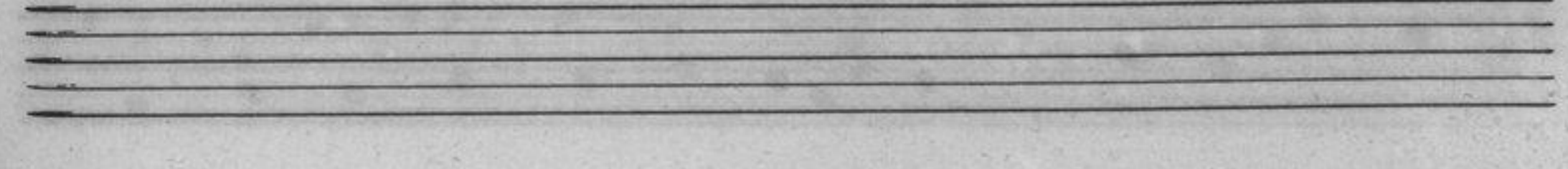
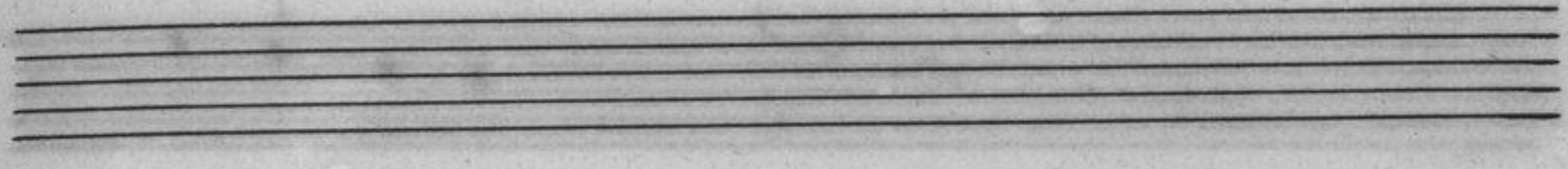
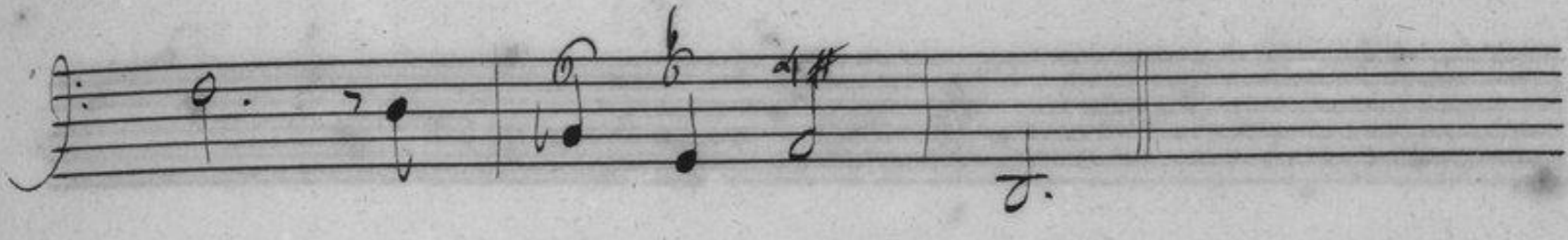
Handwritten musical notation on a single staff, featuring a bass clef and a series of eighth and quarter notes.

Handwritten musical notation on a single staff, featuring a bass clef and a series of eighth and quarter notes.

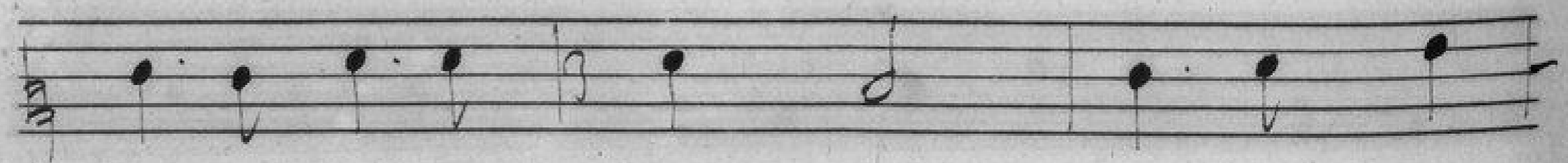
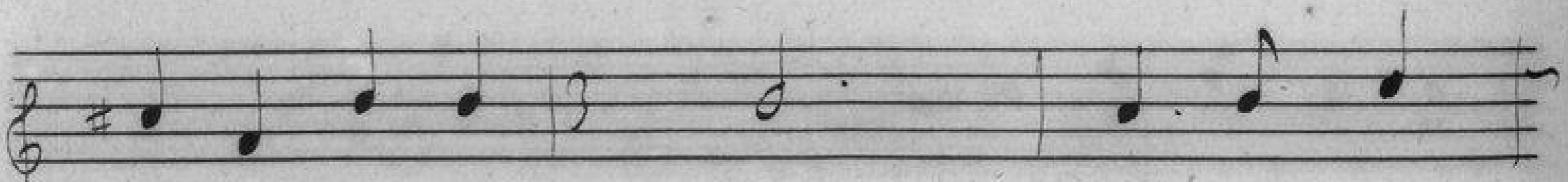
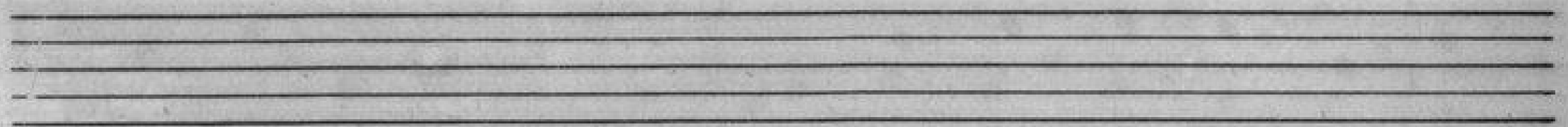
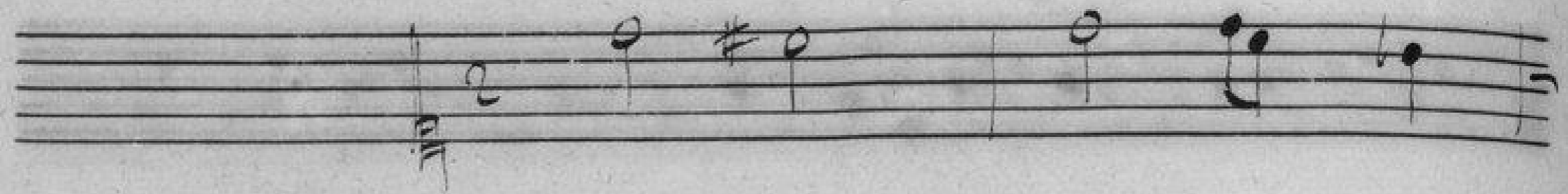
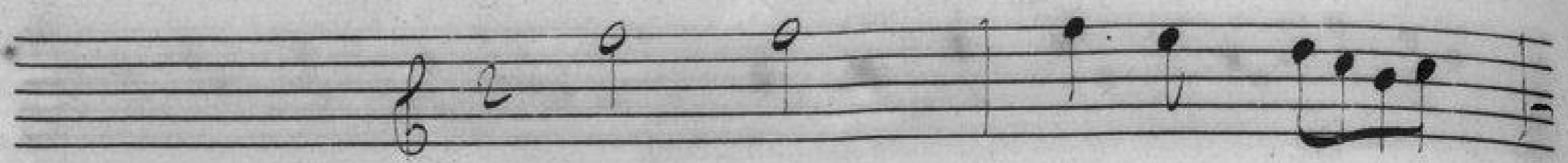
Handwritten musical notation on a single staff, featuring a bass clef and a series of eighth and quarter notes.

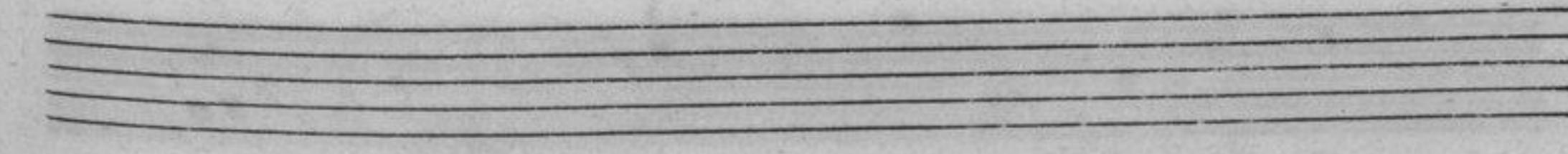
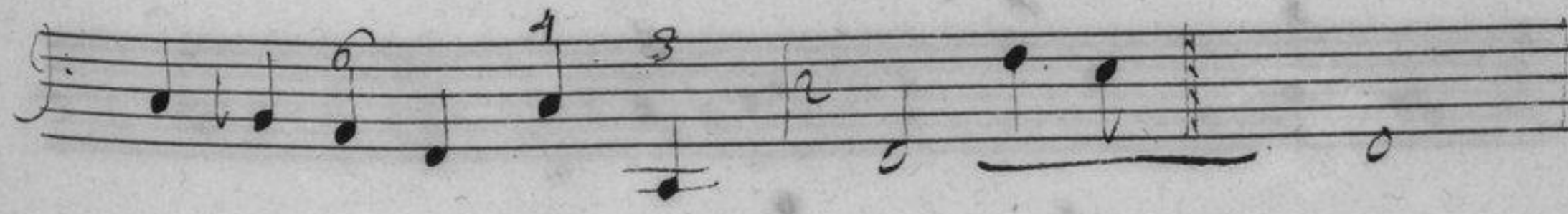
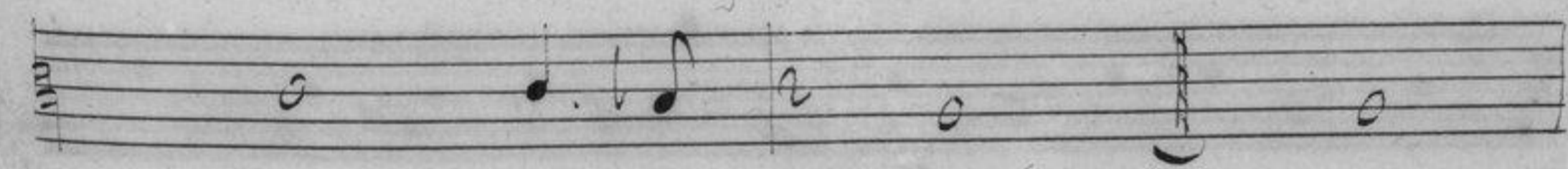
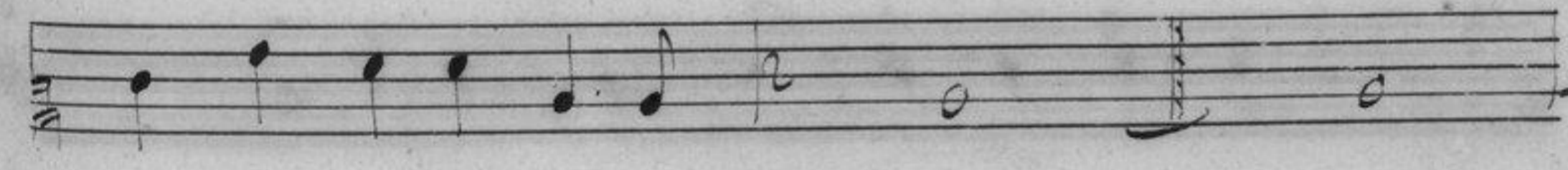
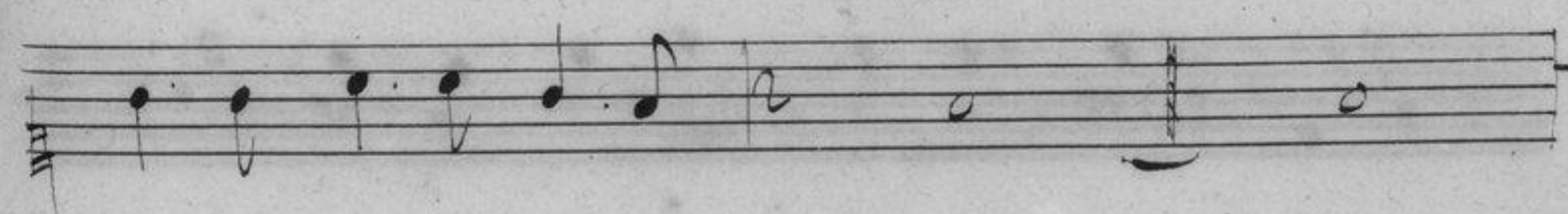
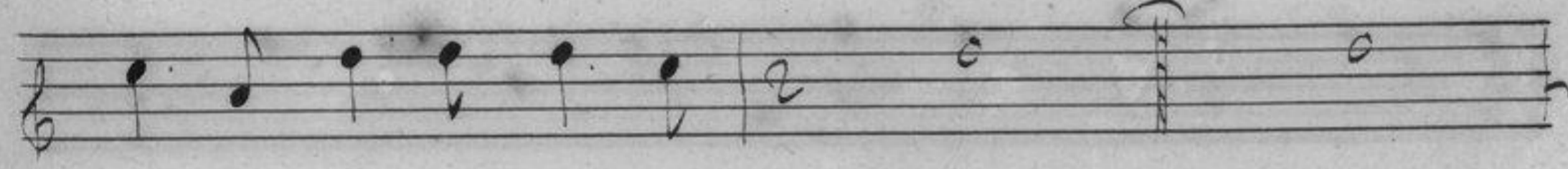
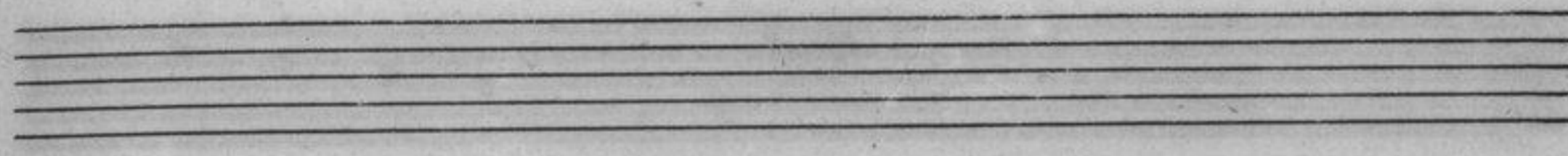
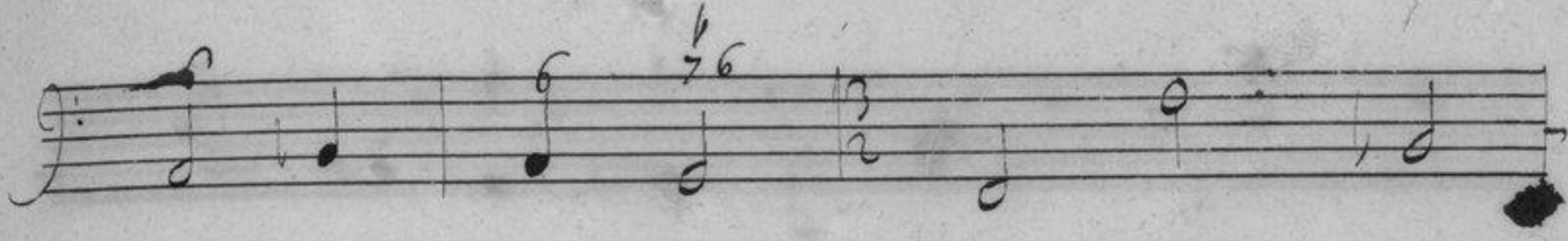
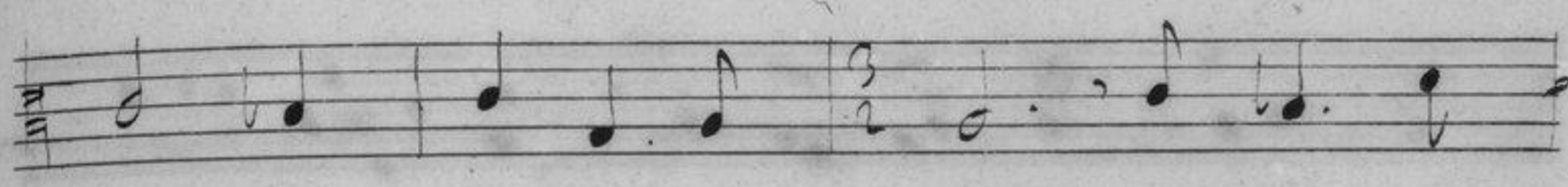
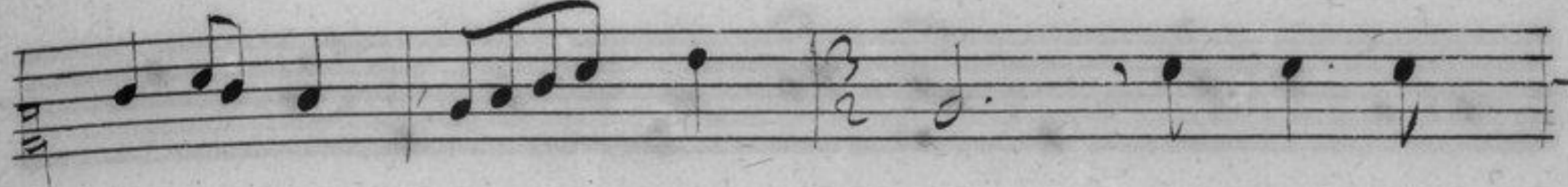
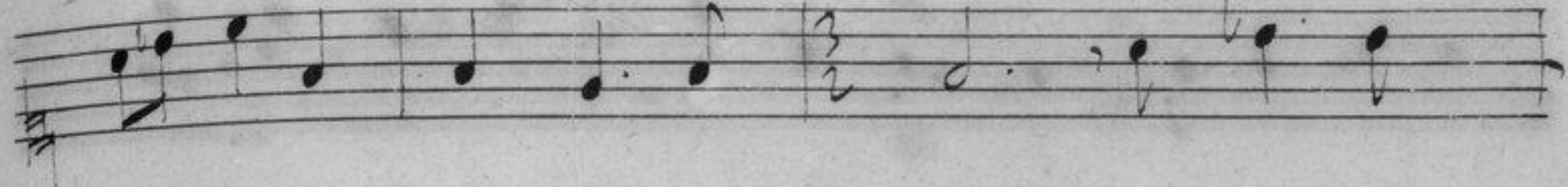
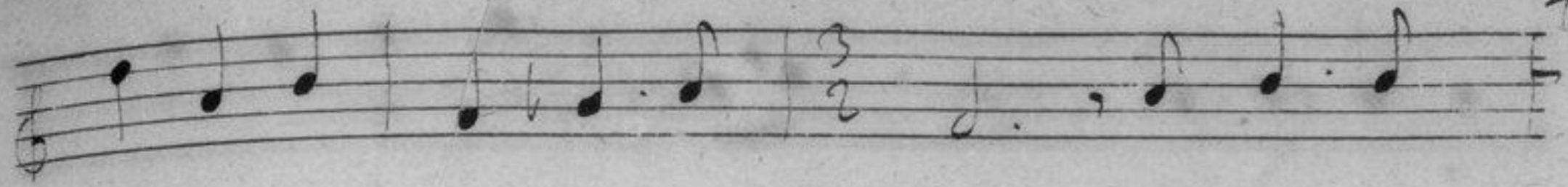
Handwritten musical notation on a single staff, featuring a treble clef. The number "46" is written above the first measure. The notation includes eighth and quarter notes.

Empty musical staff.



Quatre Medecina





The first system of handwritten musical notation consists of five staves. The top staff is a treble clef staff with a key signature of one sharp (F#) and a common time signature (C). It contains a melodic line with notes and rests. The second staff is a bass clef staff with a key signature of one sharp (F#) and a common time signature (C), containing a bass line. The third and fourth staves are also bass clef staves with a key signature of one sharp (F#) and a common time signature (C), containing bass lines. The fifth staff is a bass clef staff with a key signature of one sharp (F#) and a common time signature (C), containing bass lines and some handwritten annotations above the notes.

Two empty musical staves, one above the other, with no notation.

A single staff of handwritten musical notation with a treble clef, a key signature of one sharp (F#), and a common time signature (C). It contains notes and rests.

A single staff of handwritten musical notation with a bass clef, a key signature of one sharp (F#), and a common time signature (C). It contains notes and rests.

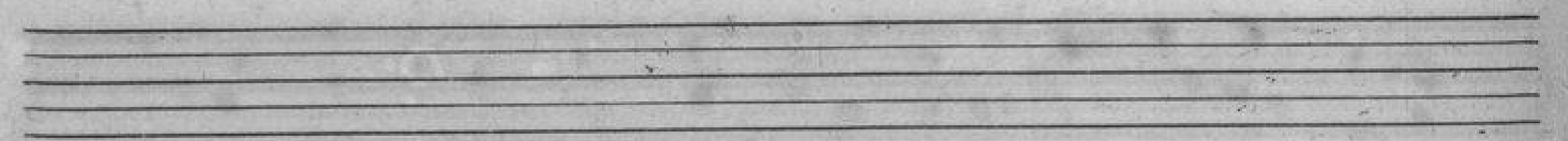
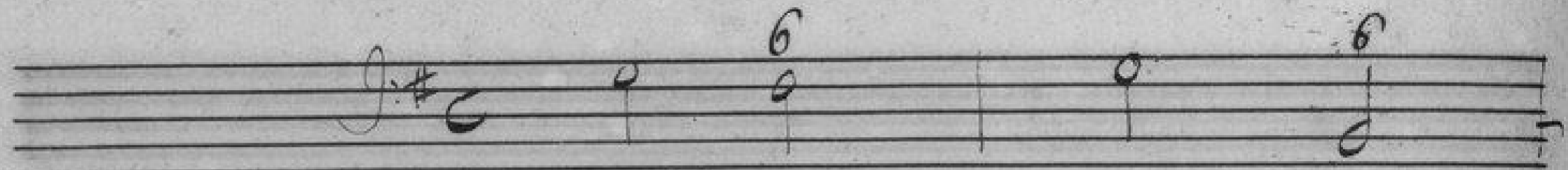
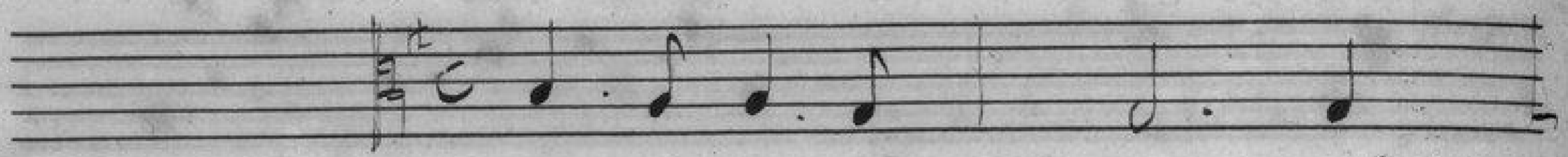
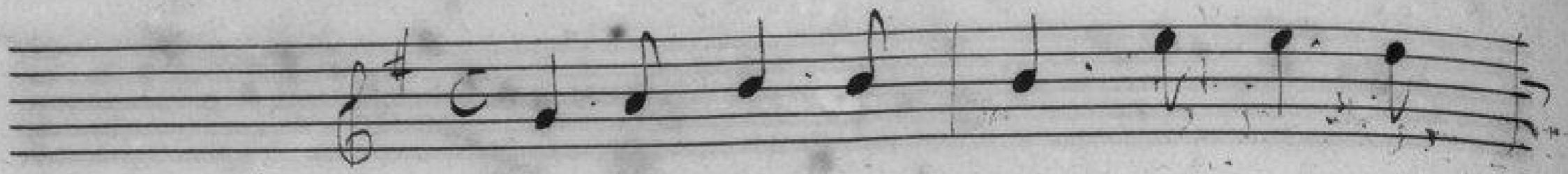
A single staff of handwritten musical notation with a bass clef, a key signature of one sharp (F#), and a common time signature (C). It contains notes and rests.

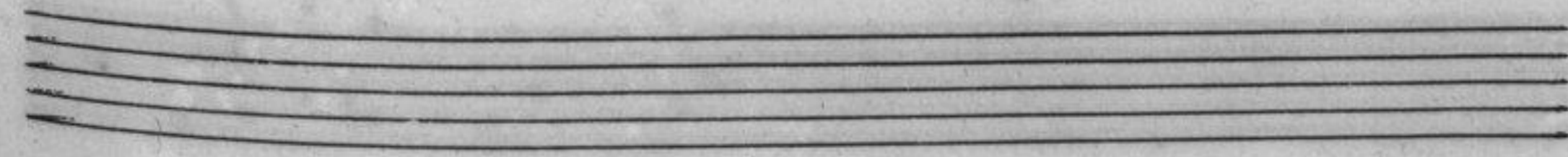
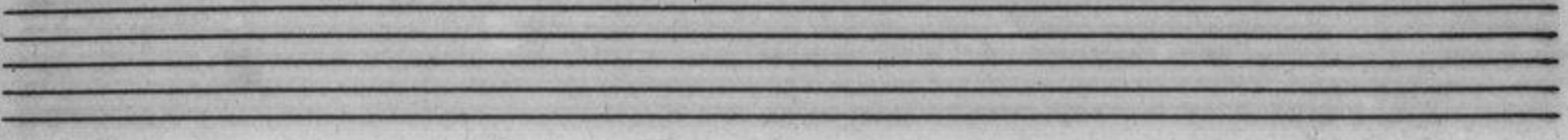
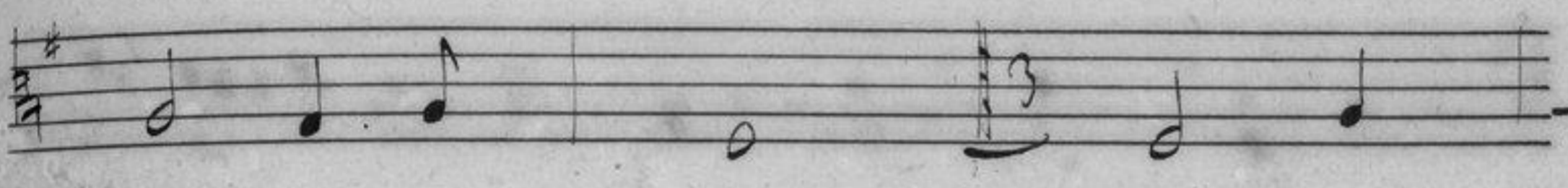
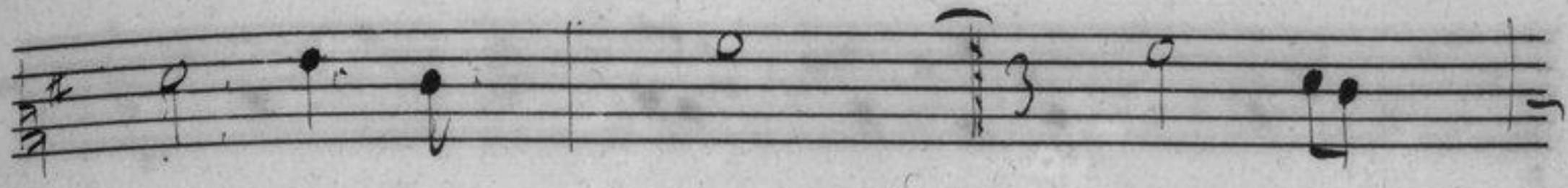
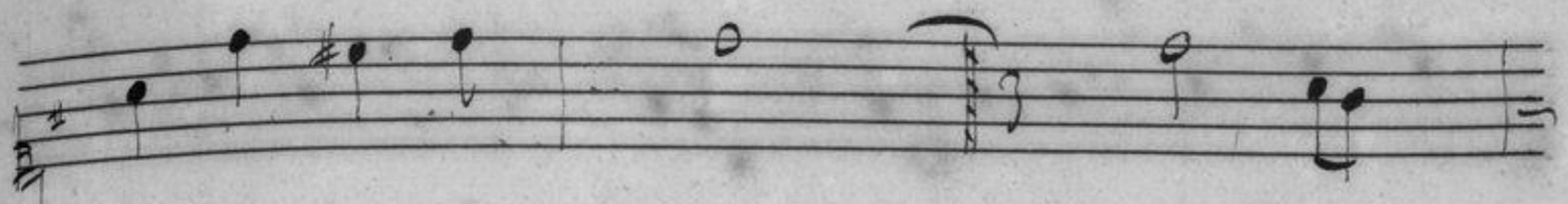
A single staff of handwritten musical notation with a bass clef, a key signature of one sharp (F#), and a common time signature (C). It contains notes and rests.

A single staff of handwritten musical notation with a bass clef, a key signature of one sharp (F#), and a common time signature (C). It contains notes and rests.

Two empty musical staves, one above the other, with no notation.

Les Triuetins & Scaramouches.





Handwritten musical score consisting of ten systems of staves. Each system contains a treble clef staff, a bass clef staff, and a grand staff. The music is in G major and 4/4 time. The first system includes a treble staff with a key signature of one sharp (F#) and a bass staff with a key signature of one sharp (F#). The second system includes a treble staff with a key signature of one sharp (F#) and a bass staff with a key signature of one sharp (F#). The third system includes a treble staff with a key signature of one sharp (F#) and a bass staff with a key signature of one sharp (F#). The fourth system includes a treble staff with a key signature of one sharp (F#) and a bass staff with a key signature of one sharp (F#). The fifth system includes a treble staff with a key signature of one sharp (F#) and a bass staff with a key signature of one sharp (F#). The sixth system includes a treble staff with a key signature of one sharp (F#) and a bass staff with a key signature of one sharp (F#). The seventh system includes a treble staff with a key signature of one sharp (F#) and a bass staff with a key signature of one sharp (F#). The eighth system includes a treble staff with a key signature of one sharp (F#) and a bass staff with a key signature of one sharp (F#). The ninth system includes a treble staff with a key signature of one sharp (F#) and a bass staff with a key signature of one sharp (F#). The tenth system includes a treble staff with a key signature of one sharp (F#) and a bass staff with a key signature of one sharp (F#).

The first system of handwritten musical notation consists of five staves. The top staff is a treble clef with a key signature of one sharp (F#) and a 2/4 time signature. It contains a sequence of notes: a quarter note G4, a quarter note A4, a quarter note B4, a quarter note C5, a quarter note D5, a quarter note E5, a quarter note D5, a quarter note C5, a quarter note B4, a quarter note A4, and a quarter note G4. The second staff is an alto clef with a key signature of one sharp (F#) and a 2/4 time signature, containing a sequence of notes: a quarter note G4, a quarter note A4, a quarter note B4, a quarter note C5, a quarter note D5, a quarter note E5, a quarter note D5, a quarter note C5, a quarter note B4, a quarter note A4, and a quarter note G4. The third staff is a bass clef with a key signature of one sharp (F#) and a 2/4 time signature, containing a sequence of notes: a quarter note G3, a quarter note F3, a quarter note E3, a quarter note D3, a quarter note C3, a quarter note B2, a quarter note A2, a quarter note G2, a quarter note F2, a quarter note E2, and a quarter note D2. The fourth staff is a bass clef with a key signature of one sharp (F#) and a 2/4 time signature, containing a sequence of notes: a quarter note G2, a quarter note F2, a quarter note E2, a quarter note D2, a quarter note C2, a quarter note B1, a quarter note A1, a quarter note G1, a quarter note F1, a quarter note E1, and a quarter note D1. The fifth staff is a bass clef with a key signature of one sharp (F#) and a 2/4 time signature, containing a sequence of notes: a quarter note G2, a quarter note F2, a quarter note E2, a quarter note D2, a quarter note C2, a quarter note B1, a quarter note A1, a quarter note G1, a quarter note F1, a quarter note E1, and a quarter note D1. There are also some handwritten annotations above the notes, including the numbers '4' and '3'.

A set of five empty musical staves, consisting of five horizontal lines each, with no notes or markings.

The second system of handwritten musical notation consists of five staves. The top staff is a treble clef with a key signature of one sharp (F#) and a 2/4 time signature. It contains a sequence of notes: a quarter note G4, a quarter note A4, a quarter note B4, a quarter note C5, a quarter note D5, a quarter note E5, a quarter note D5, a quarter note C5, a quarter note B4, a quarter note A4, and a quarter note G4. The second staff is an alto clef with a key signature of one sharp (F#) and a 2/4 time signature, containing a sequence of notes: a quarter note G4, a quarter note A4, a quarter note B4, a quarter note C5, a quarter note D5, a quarter note E5, a quarter note D5, a quarter note C5, a quarter note B4, a quarter note A4, and a quarter note G4. The third staff is a bass clef with a key signature of one sharp (F#) and a 2/4 time signature, containing a sequence of notes: a quarter note G3, a quarter note F3, a quarter note E3, a quarter note D3, a quarter note C3, a quarter note B2, a quarter note A2, a quarter note G2, a quarter note F2, a quarter note E2, and a quarter note D2. The fourth staff is a bass clef with a key signature of one sharp (F#) and a 2/4 time signature, containing a sequence of notes: a quarter note G2, a quarter note F2, a quarter note E2, a quarter note D2, a quarter note C2, a quarter note B1, a quarter note A1, a quarter note G1, a quarter note F1, a quarter note E1, and a quarter note D1. The fifth staff is a bass clef with a key signature of one sharp (F#) and a 2/4 time signature, containing a sequence of notes: a quarter note G2, a quarter note F2, a quarter note E2, a quarter note D2, a quarter note C2, a quarter note B1, a quarter note A1, a quarter note G1, a quarter note F1, a quarter note E1, and a quarter note D1. There are also some handwritten annotations above the notes, including the numbers '4' and '3'.

Fin. ~~~~~

