

Cantata à Soprano con Viola d'Amore.

*Aria andante.*

Ho-ri-solto ho-ri=

Soltto di = lasciarmi crude= rai crude rai per non mi



vir ho risolto ho=ri=solto di lasciar

= vi crude rai per non morir, per non morir, crude rai per

non= morir, crude rai per non= morir, per non morir

V.S.



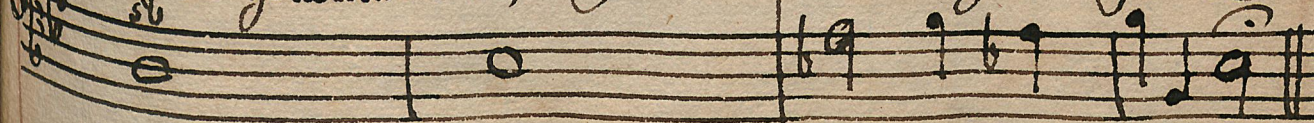
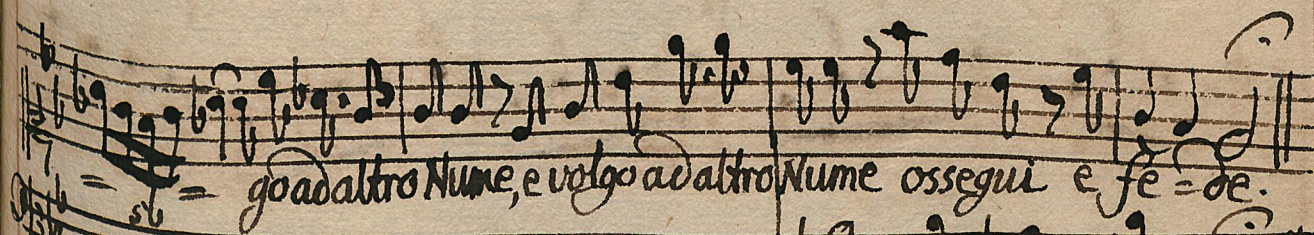
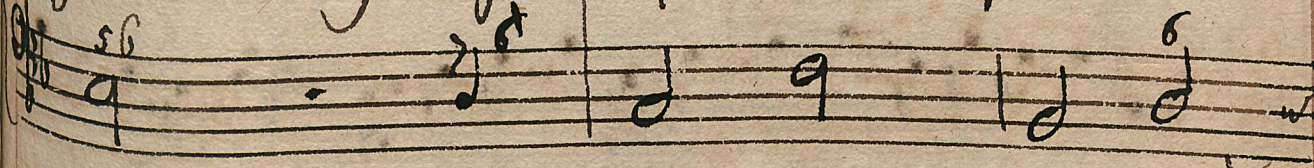
Handwritten musical notation for the first system. The top staff is a treble clef staff with a key signature of one sharp (F#) and a common time signature (C). The bottom staff is a bass clef staff with figured bass notation, including figures such as 43 6 and 6. The music consists of several measures of notes and rests.

Handwritten musical notation for the second system. The top staff is a treble clef staff. The bottom staff is a bass clef staff with figured bass notation, including figures such as 6, 4#, and 6. The lyrics "e pur = meglio = a = ban = do = no =" are written across the bottom staff.

Handwritten musical notation for the third system. The top staff is a treble clef staff. The bottom staff is a bass clef staff with figured bass notation, including figures such as 6, 5b, 6, 4, and 6. The lyrics "narvi che sprezzato ogni or lan," are written across the bottom staff.

Handwritten musical notation for the fourth system. The top staff is a treble clef staff. The bottom staff is a bass clef staff with figured bass notation, including figures such as 6, 6, and 6. The lyrics "Iguire = pur = meglio a = ban = do = narvi che = sprezzato" are written across the bottom staff.







*Aria*

Handwritten musical notation for the first system. The top staff is a vocal line in treble clef with a key signature of one sharp (F#) and a common time signature (C). The bottom staff is a keyboard accompaniment line in bass clef, featuring sixteenth-note patterns and various ornaments (6, #, sb) and accidentals.

Handwritten musical notation for the second system. The top staff is a vocal line with several rests. The bottom staff is a keyboard accompaniment line with sustained notes and some ornamentation.

Handwritten musical notation for the third system. The top staff is a vocal line. The bottom staff is a keyboard accompaniment line. The lyrics "altre labra altre pupille" are written between the two staves.

Handwritten musical notation for the fourth system. The top staff is a vocal line with several rests. The bottom staff is a keyboard accompaniment line with sustained notes.

Handwritten musical notation for the fifth system. The top staff is a vocal line. The bottom staff is a keyboard accompaniment line. The lyrics "men severe piu tranquille men severe = e piu tranquille il mio" are written between the two staves.



Handwritten musical notation for the first system. The vocal line begins with a rest, followed by the lyrics "cor retrouve-ra" and "altre labra". The piano accompaniment features a 6/4 time signature and includes a forte (f) dynamic marking.

Handwritten musical notation for the second system. The vocal line continues with the lyrics "altre pupille men se-vere e-più tran- quille-men se-vere e-più tran,". The piano accompaniment continues with a steady rhythmic pattern.

Handwritten musical notation for the third system. The vocal line concludes with the lyrics "quille il mio cor ritrovera" and "altre". The piano accompaniment features a complex rhythmic structure with a key signature change to one sharp.



labra altre pupille men severe e piu tranquille il mio cor il mio

cor ri-trovera altre labra, altre pupille men severe e piu tran

quille il mio cor il mio cor ritrovera



*fine.*

Musical staff with notes and rests, part of the first system.

Musical staff with notes and rests, part of the first system.

*Vibre-ran più cari a,,*

Musical staff with notes and rests, part of the first system.

*fine.*

Musical staff with notes and rests, part of the second system.

dori più cari adori, mi da-ran più dolci a mori più dolci amo,

Musical staff with notes and rests, part of the second system.

Musical staff with notes and rests, part of the second system.

ri, novi preggi di-bel-tà = = = =

Musical staff with notes and rests, part of the second system.

Musical staff with notes and rests, part of the second system.

novi preggi di-bel-tà.

*Da Capo.*

Musical staff with notes and rests, part of the second system.

