

SCARLATTI

ARIE

DEL PUPPIERI

...Cope
...ve.

L. Conservatorio
di Musica-Napoli
BIBLIOTECA

L. Conservatorio

03.5
39

R. Conservatorio
di Musica-Napoli
BIBLIOTECA
R. 3.5
39
Flauto



BIBLIOTECA DEL R. CONSERVATORIO
DI MUSICA DI NAPOLI

Sala _____

Scaffale 33 Pluteo 5

N. di Scaffale (Volume) / 34

N. dei Manoscritti in copia _____

N. di biblioteca _____

W. 8

p. 14

Rived^{to} base
Rov

Arie del

Pupieno

(S. Bartolomeo 1695
74 libi stam nel vol: 14 lettera M

Penelope (S. Bartolomeo 1696

34 libretto stam nel vol: 14 lettera P

Nerone

Clav

571



Faint, illegible handwriting, possibly bleed-through from the reverse side of the page.



Scelta d'ariettine

del Puppieno

Opera del Sig.^{or}

Alessandro Scarlatti

Massimo Puppieno

Melodramma rappresentato

Nel Teatro S. Bartolomeo l'anno 1695

Il libretto sta nel vol. 14 lettera M
Rond



Piu no uoglio

Piu no uoglio al cor sospetti no no uoglio al cor

no no uoglio al cor sospetti no no uoglio al-

2
2

cor ni nò uoglio al cor sospetti

The first system of the handwritten musical score consists of two staves. The upper staff is a vocal line with a treble clef, and the lower staff is a piano accompaniment with a bass clef. The lyrics are written in a cursive hand below the vocal line.

col suo stral mi sueni amore

The second system of the handwritten musical score consists of two staves. The upper staff is a vocal line with a treble clef, and the lower staff is a piano accompaniment with a bass clef. The lyrics are written in a cursive hand below the vocal line.

se più lascio dal timore per turbar i miei

The third system of the handwritten musical score consists of two staves. The upper staff is a vocal line with a treble clef, and the lower staff is a piano accompaniment with a bass clef. The lyrics are written in a cursive hand below the vocal line.

2

diletta
se più lascio dal timore per tur-

The fourth system of the handwritten musical score consists of two staves. The upper staff is a vocal line with a treble clef, and the lower staff is a piano accompaniment with a bass clef. The lyrics are written in a cursive hand below the vocal line. The word "diletta" is written on the first line of the vocal staff, and "se più lascio dal timore per tur-" is written on the second line.

3

bar i miei diletti

Da Capo

Aria

Voglio sperar si

si si si voglio spe-

rar voglio sperar - si si voglio sperar voglio spe-

-rar si si

Forse il destin placato Del mio infelice

stato haurà pietade u di Forse il destin pla-

cato Del mio infelice stato haurà pie-

fate un di *Da Capo*

minuet:

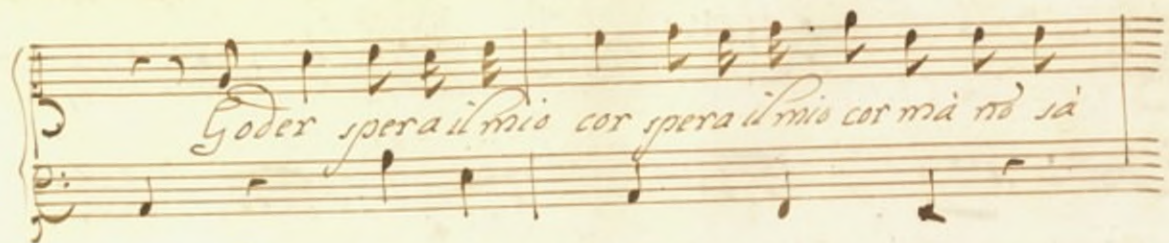
Se mi gradisce il mio te-

sor più no ambisce questo mio cor

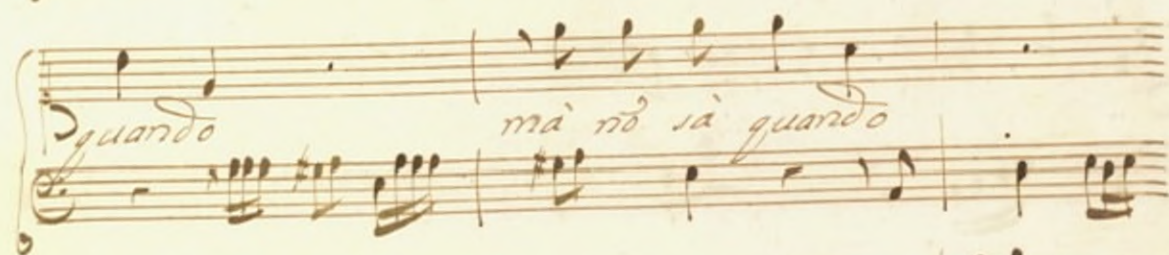
sarò contento sarò felice che me lo
dice nel sen amor da Capo

Aria

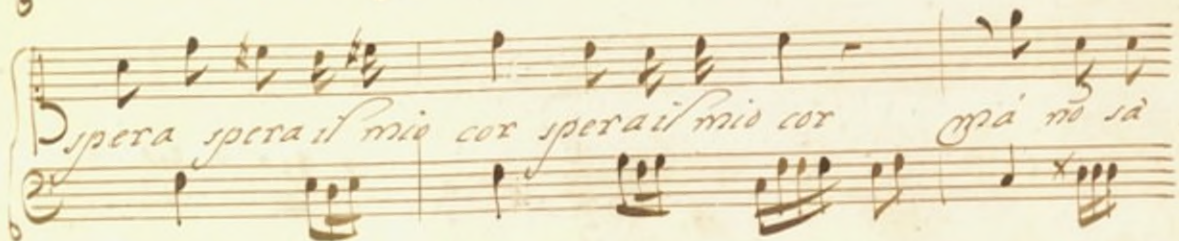
7



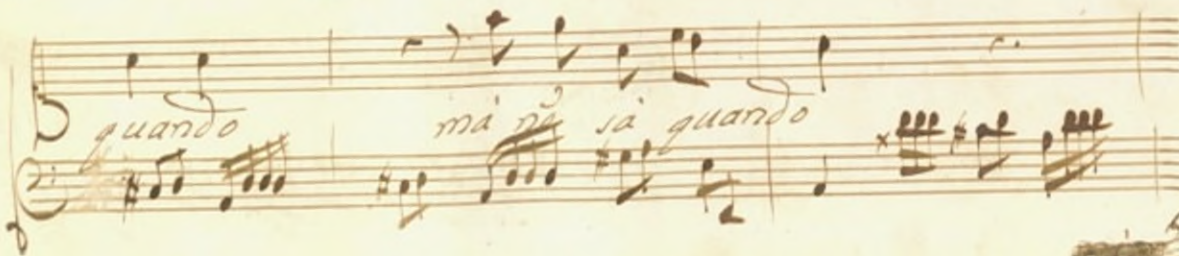
Goder spera il mio cor spera il mio cor ma nò sa



quando ma nò sa quando



spera spera il mio cor spera il mio cor ma nò sa



quando ma nò sa quando

così

cosi mi uà in amor la speme luringar

gar Do co-

si mi uà in amor la speme luringar

Handwritten musical score for the first system. The top staff is a vocal line with lyrics: *Do la speme lusingan*. The bottom staff is a piano accompaniment. The music is written in a historical style with a treble clef and a common time signature.

Handwritten musical score for the second system. The top staff is a vocal line with lyrics: *Do da capo*. The bottom staff is a piano accompaniment. The music is written in a historical style with a treble clef and a common time signature.

Handwritten musical score for the third system. The top staff is a vocal line. The bottom staff is a piano accompaniment. The music is written in a historical style with a treble clef and a common time signature.

Handwritten musical score for the fourth system. The top staff is a vocal line. The bottom staff is a piano accompaniment. The music is written in a historical style with a treble clef and a common time signature. The system concludes with the letter *A-*.

mor che saetta col dardo d'un sguardo

il cor il cor mi feri il

cor il cor mi se-

ri resisto ma in vano

*f*anguire morire mi' forga co-

si resisto ma' mi uano *f*an-

quire morire mi' forga cosi

Da Capo

Aria

Handwritten musical notation for the first system, featuring a treble clef and a bass clef with a 5/4 time signature. The notation includes a key signature of one flat and various rhythmic values.

Handwritten musical notation for the second system, featuring a treble clef and a bass clef with a 5/4 time signature. The notation includes a key signature of one flat and various rhythmic values.

Handwritten musical notation for the third system, featuring a treble clef and a bass clef with a 5/4 time signature. The notation includes a key signature of one flat and various rhythmic values.

No no so uiuere lontano

Handwritten musical notation for the fourth system, featuring a treble clef and a bass clef with a 5/4 time signature. The notation includes a key signature of one flat and various rhythmic values.

no so uire lontano da quel bel che mi se-

ri che mi feri che mi feri da quel

del che mi feri che mi fe-

ri se vicino a me non miro io deliro sospi-

rando sospirando notte e di sospiran -

do notte è

di sospirando notte è di *Capo*

Aria

mi mi no no

credo infida al

riso d'un uostro ingannator infida no

credo no credo infida al riso d'un uostro inganna-

for no credo infida no credo infida al-

riso d'un uostro ingannator che mostra u para-

Cito



16

diso che mostra il paradiso et ha l'Inferno al

cor et ha l'Inferno al cor che

mostra il paradiso et ha l'Inferno al cor

no Da Capo

Aria

Sperò che la speranza con-

Sforzo è d'ogni cor

spera che la speranza

sollie

uo e' d'ogni cor sollicito e' d'ogni

10

cor e' gode alla costanza sol-

licuo del Dolor

sol-

Pieno e del Dolor spera da Cap

Aria

Sotto finta e raggia ueste

lascio il bosco e fuggo il solco

11

abbandonno le foreste e pal

bergo del bifolco

sotto finta e roggia uerte

Lascio il bosco e fuggo il solco

Aria

Per servirli ho balma

forte

per servirli hò l'anima forte pe a-

marci hò pronto hò pronto il cor per a-

mar

Handwritten musical score for the first system. The vocal line (treble clef) contains the lyrics "ti ho pronto il cor per a-". The piano accompaniment (bass clef) features a rhythmic pattern of eighth and sixteenth notes.

Handwritten musical score for the second system, featuring a piano accompaniment (bass clef) with the word "mar" written below the first measure.

Handwritten musical score for the third system. The vocal line (treble clef) contains the lyrics "ti ho pronto il cor già nò semo". The piano accompaniment (bass clef) continues with rhythmic patterns.

Handwritten musical score for the fourth system. The vocal line (treble clef) contains the lyrics "d'empia sorte se uicende ed il rigor". The piano accompaniment (bass clef) continues with rhythmic patterns.

già

gia no' sono d'empia sorte te ui-

cende ed, il rigor

ed, il rigor. Ad Cap.

Ed. Volbi

Aria

Speranze

speranze speranze del core no

mi tradite no mi tra-

Dite no speranze no mi tradite no no

mi tradite no se scher-

nite questo core fuor del sen ui scacciero

se schermite questo

Handwritten musical notation for the first system. The vocal line (treble clef) contains the lyrics "core fuor dal sen ui scacciero". The piano accompaniment (bass clef) provides harmonic support.

Handwritten musical notation for the second system. The vocal line continues with the lyrics "ui scacciero" and "ui scacciero speranze". The piano accompaniment continues with a similar rhythmic pattern.

Handwritten musical notation for the third system. The word "Aria" is written across the staves. The vocal line (treble clef) begins with a whole note, and the piano accompaniment (bass clef) starts with a series of eighth notes.

Handwritten musical notation for the fourth system. This system shows the continuation of the piano accompaniment from the previous system, with the vocal line remaining empty.

Piangi la tua sventura

piangi la tua sventura misero misero af

flitto cor misero afflito cor

cor uaggi di sirena la

sorte mi a petto ma poscia in uil catena il

serto mi cangiò con barbaro rigor il petto

mi cangiò con barbaro rigor *Da Capo*



Aria

Cieca *forte*

il giro instabile di tuo

ro - ta quanto fa quanto fa quanto

fa piu mu-

tabile del vento al mortale in un momento

tutto muola e tutto da piu mu-

tabile

tabile del vento al mortale in un momento tutto in

uola e tutto da

Aria

Pur che resti fra le pene sempre intatta la mia

fi fra le pene pur che

resti sempre intatta fra le pe -

ne sempre intatta

La mia fe' bacerò quelle ca-

lene che tu fai cin -

-germi cingermi al piè bacerò quelle ca-

lene bacerò quelle catene

3)

che tu fai cin

- germi al piè bacerò quelle catene che tu fai

cin germi al piè



Aria

Faccia amore quanto può

Faccia amore

Handwritten musical score for a piece with lyrics. The score is written on four systems of two staves each, with a treble clef on the upper staff and a bass clef on the lower staff. The lyrics are written below the staves.

Lyrics: *quanto* *puo* *quan* *to* *puo* *quan*

The music is written in a single system of two staves per system, with a treble clef on the upper staff and a bass clef on the lower staff. The lyrics are written below the staves.

ei s'adopri

quanto sa hami adeschi ordisha

frodi speppers legami e nodi e il mio cor no

perdero speppers legami e

39

Handwritten musical score for a vocal line. The music is written on a single staff with a treble clef and a key signature of one flat. The lyrics are written below the notes. The text is: *nodi e il mio cor no perderò*. The word *Da Capo* is written in a decorative, cursive hand at the end of the line.

Handwritten musical score for an instrumental section. The word *Aria* is written in a large, decorative cursive hand across the first two staves. The music is written on two staves with a treble clef and a key signature of one flat. The notation includes various rhythmic values and rests.

Handwritten musical score for a second instrumental section. The music is written on two staves with a treble clef and a key signature of one flat. The notation includes various rhythmic values and rests.

Handwritten musical score for a third instrumental section. The music is written on two staves with a treble clef and a key signature of one flat. The lyrics *son guerrie* are written below the notes. The section ends with a decorative flourish.

Handwritten musical score for the first system. The vocal line (treble clef) contains the lyrics: "--ra" followed by a long dash, then "è sono amante" followed by a long dash, and finally "e sono aman". The piano accompaniment (bass clef) features a steady bass line with chords and some sixteenth-note passages.

Handwritten musical score for the second system. The vocal line (treble clef) contains the lyrics: "te" followed by a long dash, then "sona guerriera" followed by a long dash, and finally "te". The piano accompaniment (bass clef) features a steady bass line with chords and some sixteenth-note passages.

Handwritten musical score for the third system. The vocal line (treble clef) contains the lyrics: "è sono aman" followed by a long dash, and finally "te è sono aman". The piano accompaniment (bass clef) features a steady bass line with chords and some sixteenth-note passages.

Handwritten musical score for the fourth system. The vocal line (treble clef) contains the lyrics: "è sono aman" followed by a long dash, and finally "te è sono aman". The piano accompaniment (bass clef) features a steady bass line with chords and some sixteenth-note passages.

te
quelli or

cier
chè cieco è ignudo
sà ch'io cinga ubergòe

scudo
sequir un bel sembianze
sà ch'io cinga u=

sbergo è
per sequir p sequir un bel sembian

Handwritten musical score for the first system, featuring a treble and bass clef with notes and rests.

so guerriera

22

Handwritten musical score for the second system, including the word "Aria" and the lyrics "Notte cara".

Handwritten musical score for the third system, including the lyrics "e bramata pure al".

Handwritten musical score for the fourth system, including the lyrics "fin pure al fin tu giunge".

feco pur conducesti in hore h'ro ispi-

-ra - i febo a-

scondai suoi bei rai ch'io no' cura i suoi splendo-

ri se ha' foschi e amici orrori godo godo del bel'

solla luce amata la luce amata

nette cara è bramata notte

cara cara cara è bramata cara è brama

ta



Handwritten musical score for the first system, consisting of four staves. The top two staves are for a vocal line and a piano accompaniment. The bottom two staves are for a second vocal line and piano accompaniment. The music is in a common time signature and features various rhythmic patterns and melodic lines.

Handwritten musical score for the second system, consisting of two staves. The top staff is for a vocal line with the lyrics "Di Trombe guerrie" and "re". The bottom staff is for a piano accompaniment. The music is in a common time signature and features various rhythmic patterns and melodic lines.

Handwritten musical score for the third system, consisting of two staves. The top staff is for a vocal line with the lyrics "al suono gradito gioisce il mio". The bottom staff is for a piano accompaniment. The music is in a common time signature and features various rhythmic patterns and melodic lines.

cor

Di Trombe guerriè

re al suono gradi - to gioisce il mio cor

- gioisce gioisce gioisce il mio cor gio

isce il mio cor in meno alle

schiere di marce all'invitto si desta il valor si desta il va-

lor in mezzo alle schiere di marce all'invitto si desta il va-

lor si desta si desta il valor *Da Capo*

Arco

Aria B^c

Anco amor percan do

ua anco amor

pescan do pescando
 ua' pescan do pescando
 ua' Pesca
 Di be sta' tutto uoggi e' tutto ar-



cori preda fa di mille cori



e il di let = to goder fa e il di-



letta - - - to goder fa (D Cap)



Handwritten musical score for the first system, featuring a vocal line and a piano accompaniment. The key signature is G major (one sharp) and the time signature is 3/4. The vocal line begins with the lyrics "All. ar mi d'un bel".

Handwritten musical score for the second system, continuing the vocal line and piano accompaniment. The lyrics are "uolto ceder il cor nò sà".

Handwritten musical score for the third system, concluding the vocal line and piano accompaniment. The lyrics are "- il cor nò sà all'armi d'un bel uolto".

Handwritten musical score for voice and piano, page 52. The score is written in G major and 2/4 time. It consists of six systems of music, each with a vocal line and a piano accompaniment line. The lyrics are written in Italian.

ceder il cor nò sà

il cor nò sà nò sà

il cor nò sà *uoglio dà lacci*

sciolto goder la libertà goder

Da lacci sciolti - to goder la liber-

to goder - da lacci sciolti

- to goder la libertà Da Capo



Aria

Mi sarai sempre fida

ti porterò nel

The image shows a page of handwritten musical notation. At the top right, the page is numbered '54' and '28'. The music is written on six staves. The first two staves are for the vocal line, starting with a treble clef and a key signature of one flat. The word 'Aria' is written in cursive above the first staff. The next two staves are for the piano accompaniment, starting with a bass clef. The vocal line continues on the fifth and sixth staves, with the lyrics 'Mi sarai sempre fida' and 'ti porterò nel' written in cursive below the notes. The notation includes various note values, rests, and bar lines.

Handwritten musical score for the first system. The vocal line (treble clef) contains the lyrics "cor sempre sempre caro caro". The piano accompaniment (bass clef) features a rhythmic pattern of eighth and sixteenth notes.

Handwritten musical score for the second system. The vocal line (treble clef) contains the lyrics "caro sempre mi sarai ti porterò - nel". The piano accompaniment (bass clef) continues with a similar rhythmic pattern.

Handwritten musical score for the third system. The vocal line (treble clef) contains the lyrics "cor caro sempre mi sarai ti porte-". The piano accompaniment (bass clef) continues with a similar rhythmic pattern.

Handwritten musical score for the fourth system. The vocal line (treble clef) contains the lyrics "rò - nel cor in verde e". The piano accompaniment (bass clef) continues with a similar rhythmic pattern.

fa si uaga *Raudacia tua miaggata*

ammiro il tuo valor *il tuo ua-*

por Raudacia tua miaggata *ammiro il tuo ua-*

por *il tuo valor* *Da Capo*

59
Fria

Handwritten musical notation for the first system, including a treble clef, a 2/8 time signature, and a series of notes on a five-line staff.

Handwritten musical notation for the second system, including a bass clef and a series of notes on a five-line staff.

Handwritten musical notation for the third system, including a treble clef and a series of notes on a five-line staff.

Se mi auste Pa for -

Handwritten musical notation for the fourth system, including a treble clef and a series of notes on a five-line staff.

fund

si uedrà si uedrà ciò che farà

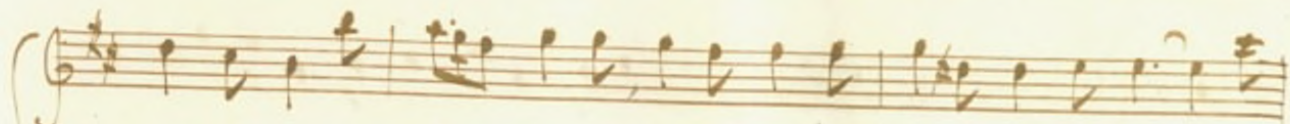
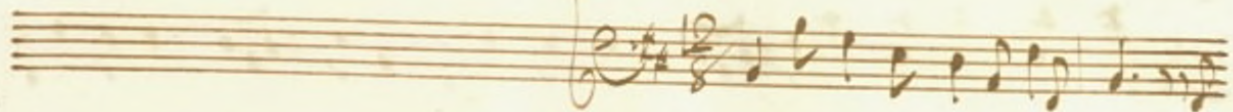
si uedrà ciò che farà

si uedrà si uedrà ciò

che farà

per serbar co' rege al regno
 scaltra frode ardire è in - regno
 in quest' alma unir saprò in quest'
 alma unir - saprò

Da Capo



61

Handwritten musical score for the first system, measures 1-4. The system consists of three staves. The top staff is in treble clef with a key signature of two sharps (F# and C#). The middle staff is in alto clef. The bottom staff is in bass clef. The music is written in a common time signature. The first measure contains a whole note chord. The second measure contains a half note chord. The third measure contains a half note chord. The fourth measure contains a half note chord. The notation includes various note values and rests.

Handwritten musical score for the second system, measures 5-8. The system consists of three staves. The top staff is in treble clef with a key signature of two sharps (F# and C#). The middle staff is in alto clef. The bottom staff is in bass clef. The music is written in a common time signature. The first measure contains a half note chord. The second measure contains a half note chord. The third measure contains a half note chord. The fourth measure contains a half note chord. The notation includes various note values and rests. The word "Ardo" is written in cursive above the bottom staff in the second measure.

Handwritten musical score for the first system, featuring three staves. The top staff is in treble clef, the middle in alto clef, and the bottom in bass clef. The music consists of several measures of notes and rests. A handwritten *Ando* marking is present above the bottom staff, and a *10-* marking is visible to its right.

Handwritten musical score for the second system, featuring three staves. The top staff is in treble clef, the middle in alto clef, and the bottom in bass clef. The music consists of several measures of notes and rests. The lyrics *spiro è peno gelo* are written below the middle staff. A handwritten *gelo* marking is present above the bottom staff.

63

Pausato

a un tempo fra tormentosi tormen-
tosi

Handwritten musical score for the first system. It consists of three staves: a vocal line in treble clef and two piano accompaniment staves (treble and bass clefs). The music is in 4/4 time and G major. The lyrics are written below the vocal line.

fosi ardori fra' tormentosi tormen

Handwritten musical score for the second system. It consists of three staves: a vocal line in treble clef and two piano accompaniment staves (treble and bass clefs). The music continues from the first system. The lyrics are written below the vocal line.

fosi ardori ma chi penar no' vuol

Handwritten musical score for the first system. It consists of three staves: a vocal line in treble clef and two piano accompaniment staves (treble and bass clefs). The music is in 4/4 time and G major. The lyrics are written below the vocal line.

nò nò s'innamori mà chi penar nò uost

Handwritten musical score for the second system. It consists of three staves: a vocal line in treble clef and two piano accompaniment staves (treble and bass clefs). The music continues in 4/4 time and G major. The lyrics are written below the vocal line.

nò nò nò s'innamori

Handwritten musical score for the first system, consisting of three staves. The top staff is a treble clef with a key signature of one sharp (F#) and a 4/4 time signature. The middle staff is a bass clef with a key signature of one sharp (F#) and a 4/4 time signature. The bottom staff is a bass clef with a key signature of one sharp (F#) and a 4/4 time signature. The lyrics are written below the middle staff.

nò nò nò s'innamori ma chi penar nò



Handwritten musical score for the second system, consisting of three staves. The top staff is a treble clef with a key signature of one sharp (F#) and a 4/4 time signature. The middle staff is a bass clef with a key signature of one sharp (F#) and a 4/4 time signature. The bottom staff is a bass clef with a key signature of one sharp (F#) and a 4/4 time signature. The lyrics are written below the middle staff.

uol nò uol nò uol penar nò s'innamo



The first system of the handwritten musical score consists of three staves. The top staff is in treble clef with a key signature of one sharp (F#) and a 3/8 time signature. It begins with a whole note chord (F#4, A4, C5) followed by a half note chord (G4, B4, D5) and a quarter note chord (E5, G5, B5). The middle staff is in alto clef and contains a whole note chord (F#4, A4, C5) followed by a half note chord (G4, B4, D5). The bottom staff is in bass clef and contains a whole note chord (F#4, A4, C5) followed by a half note chord (G4, B4, D5) and a quarter note chord (E5, G5, B5). A small 'r.' is written above the first note of the bottom staff.

A set of five empty musical staves, likely reserved for a second system of music.

The second system of the handwritten musical score consists of three staves. The top staff is in treble clef with a key signature of one sharp (F#) and a 3/8 time signature. It begins with a whole note chord (F#4, A4, C5) followed by a half note chord (G4, B4, D5) and a quarter note chord (E5, G5, B5). The middle staff is in alto clef and contains a whole note chord (F#4, A4, C5) followed by a half note chord (G4, B4, D5). The bottom staff is in bass clef and contains a whole note chord (F#4, A4, C5) followed by a half note chord (G4, B4, D5) and a quarter note chord (E5, G5, B5). The word "Violino solo" is written above the top staff, and "Cresc" is written below the middle staff.

A set of five empty musical staves, likely reserved for a third system of music.

Handwritten musical score for the first system. It consists of a vocal line and a piano accompaniment. The vocal line is written on a single staff with a treble clef and a key signature of two sharps (F# and C#). The piano accompaniment is written on two staves (treble and bass clefs) with a grand staff bracket. The music is in 4/4 time. The lyrics are written below the vocal line.

Le trombe suo - nino mentr' a com -

Handwritten musical score for the second system. It consists of a vocal line and a piano accompaniment. The vocal line is written on a single staff with a treble clef and a key signature of two sharps (F# and C#). The piano accompaniment is written on two staves (treble and bass clefs) with a grand staff bracket. The music is in 4/4 time. The lyrics are written below the vocal line.

bat - tere uolo per te

61

Respere tuo nino p farni ab

bat tere Pringuo Re

Assistimi o Des- tino

assistimi o Destino nō mi mancar o

Handwritten musical score for the first system. It consists of three staves. The top staff is a vocal line with a treble clef and a key signature of one sharp (F#). The middle and bottom staves are piano accompaniment, with the middle staff using a treble clef and the bottom staff using a bass clef. The lyrics are written below the middle staff.

cor assistmi o Destino nō mi mancare o

Handwritten musical score for the second system. It consists of three staves, continuing the vocal line and piano accompaniment from the first system. The lyrics are written below the middle staff.

cor nō mi maneat — — — nō

mi mancare o cor nã mi mancar

The first system of the handwritten musical score consists of three staves. The top staff is a vocal line with a treble clef and a key signature of one sharp (F#). It contains three measures of music. The middle staff is a piano accompaniment with a treble clef, also in one sharp, and contains three measures of music. The bottom staff is a piano accompaniment with a bass clef, also in one sharp, and contains three measures of music. The lyrics "mi mancare o cor nã mi mancar" are written below the middle staff.

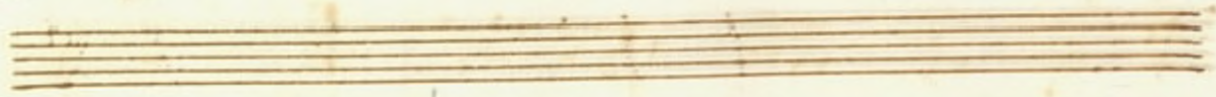
nã mi mancar o cor

The second system of the handwritten musical score consists of three staves. The top staff is a vocal line with a treble clef and a key signature of one sharp (F#). It contains three measures of music. The middle staff is a piano accompaniment with a treble clef, also in one sharp, and contains three measures of music. The bottom staff is a piano accompaniment with a bass clef, also in one sharp, and contains three measures of music. The lyrics "nã mi mancar o cor" are written below the middle staff.

cederà perirà chi armato d'orgoglio vuol su-

perbo in campidoglio usurpari il sacro allor peri-

-ra chi armato armato d'orgoglio vuol superbo in campi



Orgoglio usurparsi il sacro altar usurpar



Handwritten musical score for the first system. It consists of a grand staff with piano accompaniment on the left and a vocal line on the right. The piano part features dense chordal textures in the first measure, followed by more rhythmic patterns. The vocal line begins with a rest, then enters with a melodic phrase. The key signature has one sharp (F#) and the time signature is common time (C).

si il sacro allor da capo

Aria

Handwritten musical score for the second system, starting with the section labeled 'Aria'. It features a grand staff with piano accompaniment and a vocal line. The piano part has a more rhythmic and melodic character compared to the first system. The vocal line is more prominent. The key signature remains one sharp (F#) and the time signature is common time (C).

77

Ti darò la libertà la libertà

ti darò la libertà la libertà

caderà dal Regno soglio il ti-

ran e il campo oglio haurà fin haurà fin la crudel-

fa haurà fin haurà fin la crudeltà De Deo

Chi mi spoglia il regio crine Deo

mani e uerdi all'ori

Chè mi spaglia il regio crime de romani e

uerdi all'ori entro ai bell'ici fragori entro ai

bell'ici fragori cadra estinto alle mie piante e-

stinto

Intto alle mie piante

Drammi triopfante De bello il campo doglio

sup cadavere suo salt al soglio

e vedrammi triopfante De bello

Tato il cammidoglio sul cadavere suo talis

- al soglio al soglio

ad Cap



Aria

Questo globo chero-

fon - do forma

base a questo pie questo

globo che roton - do forma base a questo

pie noto fa' ch'io son del mondo tra i monar

- chi eccel - so eccelso Re' noto

fa' ch'io son del mondo tra i monarchi eccelso Re' ec-

cel - so eccelso Re'

Handwritten musical notation for the first system, consisting of four staves. The top two staves are in treble clef, and the bottom two are in bass clef. The notation includes various note values and rests.

alba lucida che dal gance
porti al mondo il nuovo giorno

Handwritten musical notation for the second system, consisting of four staves. The top two staves are in treble clef, and the bottom two are in bass clef. The lyrics are written below the notes.

sù prim' crin di Lauri adorno

or che cade il liquor - di sue ru -

giade già ch'il sol co suoi splen -

dori in si bel di se mie vit -

forie mdo ri

co suoi splendori in si bel di le mie ult-

to rie mdo

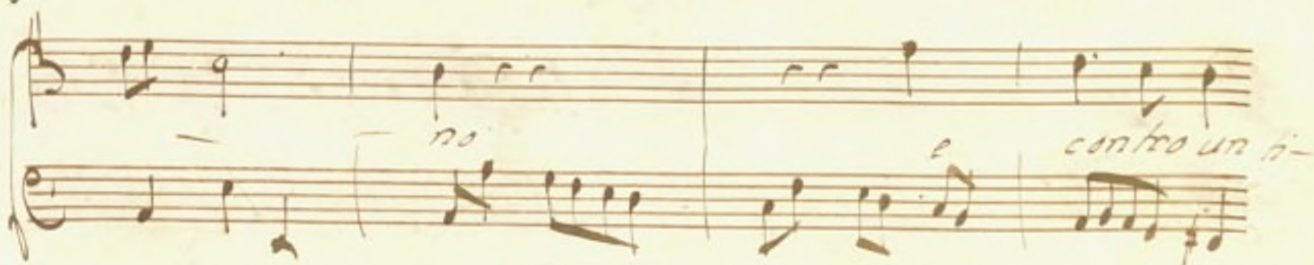
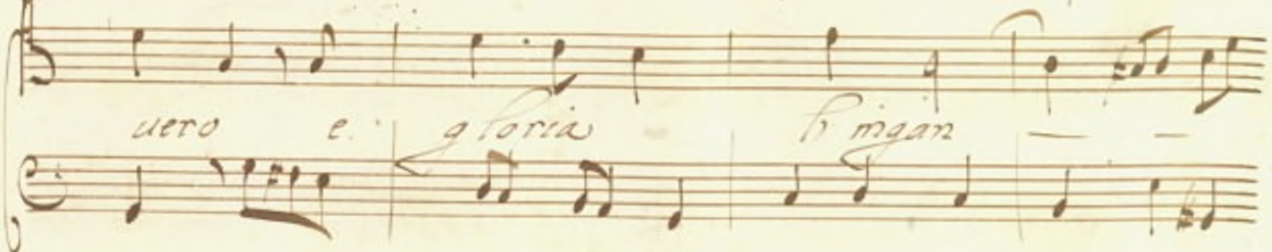
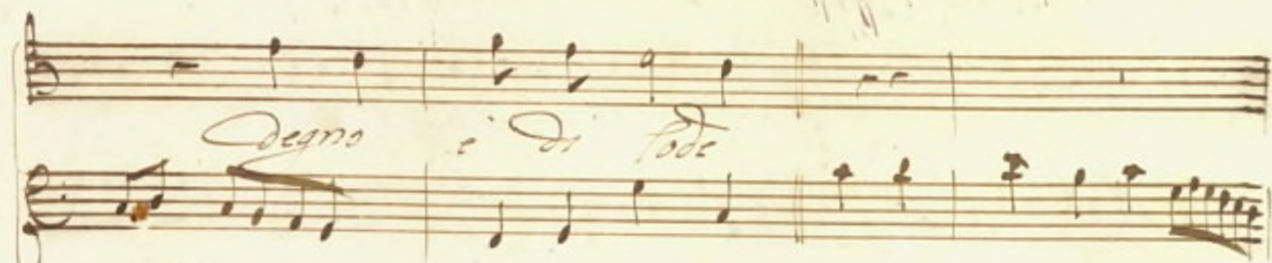
ri le mie vittorie mdo ri

Ch. 1. 2.

patria è fedel

Dignosi di fede

Digno



Handwritten musical score for the first system. The top staff is a vocal line with lyrics: *ranno uir tude i ta fro*. The bottom staff is a piano accompaniment. The music is written in a single system with a treble clef and a common time signature.

Handwritten musical score for the second system. The top staff is a vocal line with lyrics: *De ad Cap*. The bottom staff is a piano accompaniment. The music is written in a single system with a treble clef and a common time signature.

Handwritten musical score for the third system. The top two staves are empty. The bottom staff contains a piano accompaniment. The music is written in a single system with a treble clef and a common time signature.

Handwritten musical score for the fourth system. The top two staves are empty. The bottom staff contains a piano accompaniment. The music is written in a single system with a treble clef and a common time signature.

O summi sacer - ni

This system contains a vocal line and a piano accompaniment. The vocal line begins with a whole rest followed by a half note 'O', then a quarter note 'summi', a quarter note 'sacer', a half note 'ni', and a final quarter note. The piano accompaniment consists of a treble clef with a key signature of one flat and a 4/4 time signature. It features a series of chords and moving lines in both hands.

ch' in uoi si confida peccite no

This system continues the musical piece with a vocal line and piano accompaniment. The vocal line starts with a whole rest, followed by a half note 'ch', a quarter note 'in', a quarter note 'uoi', a half note 'si', a quarter note 'confida', a half note 'peccite', and a final quarter note 'no'. The piano accompaniment continues with similar harmonic and melodic patterns.

può perire no può

a voi signorari o dei tutelarari

This system contains two staves. The upper staff is a vocal line with a treble clef and a common time signature. The lower staff is a basso continuo line with a bass clef. The lyrics are written in a cursive hand below the notes.

ch' in voi si confida perire no

fumi eterni arder farò

This system contains two staves. The upper staff is a vocal line with a treble clef and a common time signature. The lower staff is a basso continuo line with a bass clef. The lyrics are written in a cursive hand below the notes.

pus

sumi eter - ni anser fari

This system contains three staves. The top staff is a vocal line with a treble clef and a key signature of one flat. The second and third staves are piano accompaniment staves, with the second staff in treble clef and the third in bass clef. The lyrics are written below the vocal staff.

numi super ni ch'in uoi si confida perire no

This system contains three staves. The top staff is a vocal line with a treble clef and a key signature of one flat. The second and third staves are piano accompaniment staves, with the second staff in treble clef and the third in bass clef. The lyrics are written below the vocal staff.

Handwritten musical score for the first system. It consists of three staves. The top staff is a vocal line with lyrics: "qui petire no[n] qui". The middle staff is a vocal line with lyrics: "lumi[n]e eter[n]i arderi fari". The bottom staff is a piano accompaniment. The music is written in a cursive hand on aged paper.

Handwritten musical score for the second system. It consists of three staves. The top two staves are empty. The bottom staff contains piano accompaniment. The music is written in a cursive hand on aged paper.

Handwritten musical notation on four staves. The top two staves are mostly blank with some faint notes. The third staff contains a melodic line with various note values and rests. The fourth staff is empty.

Handwritten musical notation on two staves. The top staff is a vocal line with lyrics: *Dalle poma di quel seno dra*. The bottom staff is a piano accompaniment with chords and moving lines. The notation is in brown ink on aged paper.

Handwritten musical score for the first system. The system consists of two staves. The upper staff is a vocal line with lyrics written below it. The lower staff is a piano accompaniment. The lyrics are: "go uigile sarò dalle poma di quel".

Handwritten musical score for the second system. The system consists of two staves. The upper staff is a vocal line with lyrics written below it. The lower staff is a piano accompaniment. The lyrics are: "seno Ira go uigile sarò". The word "fanno" is written at the end of the system, possibly indicating the end of a phrase or section.

haurò il cor liet e sereno se modesto io ti ve-

The first system consists of a vocal line on a single staff and a piano accompaniment on two staves. The vocal line begins with a treble clef and a common time signature. The lyrics are written below the notes. The piano accompaniment starts with a bass clef and a common time signature, featuring a rhythmic pattern of eighth and sixteenth notes.

Drò io ti vedrò haurò il

dra - go uigile sarò

The second system continues the musical piece. The vocal line is on a single staff, and the piano accompaniment is on two staves. The lyrics are split across the vocal line and the piano part. The piano accompaniment continues with a similar rhythmic pattern to the first system.

Handwritten musical notation for the first system. The top staff is a vocal line with lyrics written below it. The bottom staff is a piano accompaniment. The lyrics are: *cor lieto e sereno se modesto io ti uedro id ti ue-*

Handwritten musical notation for the second system, featuring a piano accompaniment. The top staff contains several measures of music, including chords and single notes. The bottom staff is empty.

Handwritten musical notation for the third system. The top staff is a vocal line with lyrics written below it. The bottom staff is a piano accompaniment. The lyrics are: *ori*

a e:

a tanto onore → *quello mio*

Handwritten musical score for voice and piano. The score is written on two systems of staves. The first system consists of a vocal line (treble clef) and a piano accompaniment line (bass clef). The second system also consists of a vocal line (treble clef) and a piano accompaniment line (bass clef). The lyrics are written in cursive below the vocal lines.

core giu-bi-la in sen a

tanto onore questo mio core giubila in

sen a tanto onore que-

sto mio core giu-bia in son

uò

Handwritten musical score for the first system. It consists of three staves. The top staff is a vocal line in G major (one sharp) and 4/4 time, with a treble clef. The middle staff is the piano accompaniment, also in G major and 4/4 time, with a treble clef. The bottom staff is the piano accompaniment in bass clef. The lyrics are written in cursive below the vocal line.

si quel labro di fin cinabro mille è più

Handwritten musical score for the second system. It consists of three staves. The top staff is a vocal line in G major (one sharp) and 4/4 time, with a treble clef. The middle staff is the piano accompaniment, also in G major and 4/4 time, with a treble clef. The bottom staff is the piano accompaniment in bass clef. The lyrics are written in cursive below the vocal line.

oaci tutti morda - ci darti mio

questo mio core giubila in sen
 ben suo su quel

The first system of the handwritten musical score consists of two staves. The upper staff is a vocal line in G major, starting with a treble clef and a key signature of one sharp (F#). The lower staff is a piano accompaniment in G major, starting with a bass clef and a key signature of one sharp (F#). The lyrics are written below the vocal staff. The music is in 4/4 time. The first measure of the vocal line contains the lyrics 'questo mio core' and the first measure of the piano accompaniment contains the lyrics 'ben suo su quel'. The system concludes with a double bar line.

fabro di fin cina - bro mille e più baci

The second system of the handwritten musical score consists of two staves. The upper staff is a vocal line in G major, starting with a treble clef and a key signature of one sharp (F#). The lower staff is a piano accompaniment in G major, starting with a bass clef and a key signature of one sharp (F#). The lyrics are written below the vocal staff. The music is in 4/4 time. The first measure of the vocal line contains the lyrics 'fabro di fin cina' and the first measure of the piano accompaniment contains the lyrics 'bro mille e più baci'. The system concludes with a double bar line.

ulti mordaci danti mis cor

Fine



206161