

Scelta di diverse Ariettine

della Penelope

Opera del Sig: ^{1^o}

Alessandra

Scarlatti



Teatro S. Bartolomeo

1696



Violino solo

Aria

Handwritten musical score for Violino solo, labeled "Aria". The score is written on two systems of staves. The first system consists of three staves: the top staff is for the Violino solo (treble clef), the middle staff is empty, and the bottom staff is for the basso continuo (bass clef). The second system also consists of three staves: the top staff is for the Violino solo (treble clef), the middle staff is empty, and the bottom staff is for the basso continuo (bass clef). The music is written in a single system with a common time signature (C). The notation includes various rhythmic values, including eighth and sixteenth notes, and rests. The paper shows signs of age, including discoloration and a faint purple circular stamp on the left side.

Parla piano piano piano col mio core Dio d'a-

mor
parla piano

Handwritten musical score for the first system. It consists of three staves. The top staff is a vocal line with a treble clef. The middle and bottom staves are for piano accompaniment, with a grand staff (treble and bass clefs). The lyrics "col mid co" are written under the piano part, and "re il" is written under the vocal line. The music is in a single system with a repeat sign at the end.

Handwritten musical score for the second system. It consists of three staves. The top staff is a vocal line with a treble clef. The middle and bottom staves are for piano accompaniment, with a grand staff (treble and bass clefs). The lyrics "die d'amor" are written under the piano part, and "col mid cor" is written under the vocal line. The music is in a single system with a repeat sign at the end.

Handwritten musical score for the first system. It consists of a vocal line on a single staff and piano accompaniment on two staves. The vocal line begins with a treble clef and contains several measures of music. The piano accompaniment starts with a bass clef and includes chords and melodic lines. The lyrics "re Dio d'amor" are written in cursive below the vocal line.

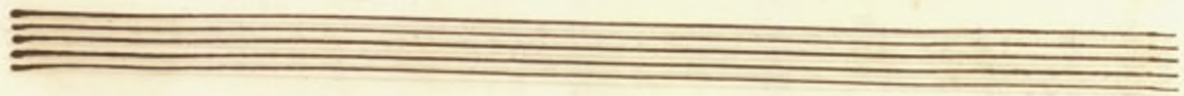
Handwritten musical score for the second system. It continues the vocal and piano parts from the first system. The vocal line has a treble clef and contains the lyrics "e mi dice ama un giorno e i parai deli". The piano accompaniment continues on two staves with a bass clef.

Handwritten musical score for the first system. The top staff is a treble clef staff containing complex chords and melodic lines. The bottom staff is a bass clef staff with lyrics: *re* and *forza*.

Handwritten musical score for the second system. The top staff is a treble clef staff with complex chords. The bottom staff is a bass clef staff with lyrics: *core gli risponde gli risponde*.

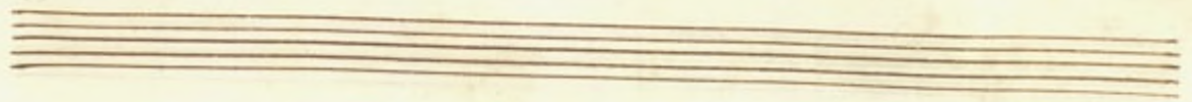
qui face e si confonde

This system contains three staves. The top staff is a vocal line in G-clef. The middle and bottom staves are piano accompaniment in C-clef and F-clef respectively. The lyrics 'qui face e si confonde' are written across the middle staff.



si si ripiglia amar uorrei a

This system contains three staves. The top staff is a vocal line in G-clef. The middle and bottom staves are piano accompaniment in C-clef and F-clef respectively. The lyrics 'si si ripiglia amar uorrei a' are written across the middle staff.



mar amar uorrei ma' ma' fu sei pume infido nume in -

fido traditor ma' fu sei nume infido pume in -

fido

Handwritten musical score for the first system. It consists of two staves. The upper staff is a vocal line with a treble clef and a key signature of one flat. The lower staff is a piano accompaniment with a bass clef. The lyrics "fido è traditor" are written in cursive below the vocal line.

Handwritten musical score for the second system. It consists of two staves. The upper staff is a vocal line with a treble clef and a key signature of one flat. The lower staff is a piano accompaniment with a bass clef. The lyrics "Aria Si arrivi a di a go-" are written in cursive below the vocal line.

Handwritten musical score for the third system. It consists of two staves. The upper staff is a vocal line with a treble clef and a key signature of one flat. The lower staff is a piano accompaniment with a bass clef. The lyrics "Der" and "fa" are written in cursive below the vocal line.

pur le tue uendette col faretrato arcier s'ar-

riu u undi a goder sa pur le tue uendette col

faretrato arcier sa pur le tue uendette col

faretrato arcier insegnali a dar peno e a'

stringer fra catena un anima fedel in -

segnali a dar pena e a stringer fra catena

un anima fedel da capo

Aria

The first system of the manuscript consists of four staves. The top two staves are for a vocal line, with the word "Aria" written in a decorative script across the first staff. The bottom two staves are for a piano accompaniment, showing a complex rhythmic pattern with many beamed notes.

Amor che mi tormenta il
cor che mi tormenta il cor col tuo rigor col tuo ri-

The second system of the manuscript consists of four staves. The top two staves are for a vocal line, with the word "Amor" written in a decorative script across the first staff. The bottom two staves are for a piano accompaniment. The lyrics "che mi tormenta il cor che mi tormenta il cor col tuo rigor col tuo ri-" are written in a cursive hand across the bottom two staves.

gor ar

ma adun'or sarà mia fedelta di sofferen

ga mia fedelta di sofferen - ga se'nd mi'

uoi pazienza



pagienza da Capl.
 No' nò prender spòso
 nò se' nò uoi pene al
 cor nò prender spòso nò se' nò uoi pene al

cor nd prender sposo no se nd uoi pene al

cor Dal huom disciolto uà se l'altro prende-

ra stara in tormenti ogn'or dal huò chi sciolto

uà se l'altro prenderà stara in tormenti ogn'

or -

Ho no no piangere

no sospirar

no piangere no no no sospirar

no

nd piangere nd ni nd sospirar

del tuo dolor mi sento frangere

pel petto il cor mi rendi esanime e

sanime mi rendi col tuo penar mi rendi e-

sanime esanime mi rendi col tuo penar

Aria Jari felice

Palma lo cre - de sa -

ro felice si sarò felice si Palma lo

cre - De sarò felice si sa

ro felice si Palma lo cre De

i dolce lo sperare a

chi sa ben amare contenti amor promette al fin for

Ode contenti amor promette al fin co

ce Ode si si concede si bonce De Dal Cap

Da Cap

for

Fria

and

sibil che no sente pietà del mio dolor quel

crudo traditor quel crudo traditor

Suo

tanto lagrimar uo tanto ispirar

fin che di quell'anima si spezza il suo rigor

fin che di quell'anima si spezza il suo rigor si

spazza il suo rigon *da Cap)*

Aria

5

Aprò

sapró ben come stringere chi
pena al mio martir chi pena sapró
stringere chi pena al mio martir chi pe
na al mio martir

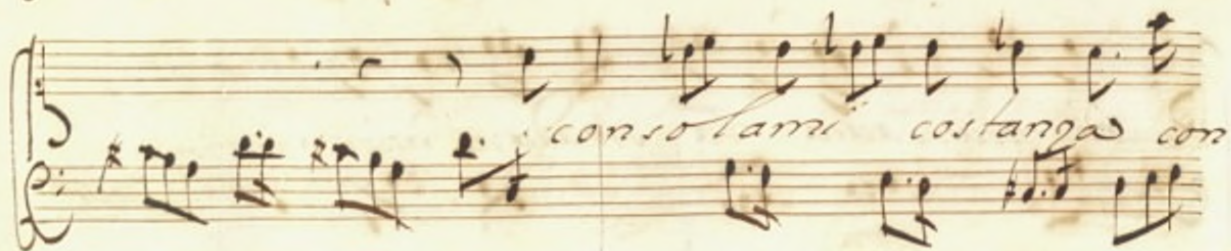
se

Se carta più nd

hò la manche la uergò ben aprira più

cauta la strada al mio gioir ben apri-

ra più cauta la strada al mio marim



solami nel Duol

l'inganno adoprerò già mai no' tradi-

ro l'ombra del mio bel sol l'ombra del mio bel

sol l'inganno adoprerò già mai no'

tradiziona ro l'ombra del mio bel sol

Coel mio, bel sol

Aria Piu piu na credo mio cordi

piangere

Crede ridere crede rider

e di pianger più nò crede nò nò

più di pian -

ger nò crede nò nò nò più di -

cord.

pian — — — — — *ger no' crede no'*
ridero' no' piangero' no' piangero' e' can —
giato il pianto il riso in ri — — — — — *so gioiro' ride* —
ro' gioiro' — — — — — *ni no' no' piange'*

rd e' cangiato il pianto in riso il pianto in riso

gioiri e' cangiato il pianto in riso il pianto in

riso gioiri da Capo

re-

Aria In me confida e
spera
si spera spera si si spera spera si

si in me confida e spera ni

ni no lacrimar = no no no lacrimar in

me confidate spera no no no lacri

mar - no no no lacrimar

si

i debolezza il pianto del

fuo gran cor sia uanto l'ingiuria uendicar del

fuo gra cor sia uanto l'ingiuria uendicar uendi

car uendicar

