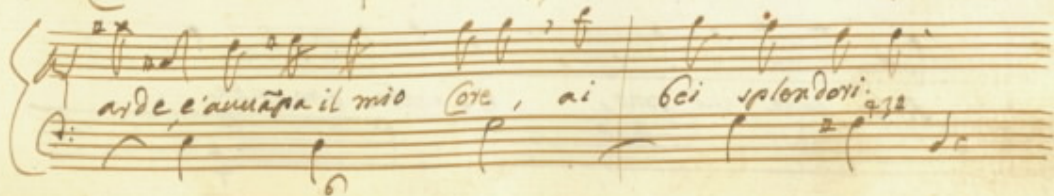
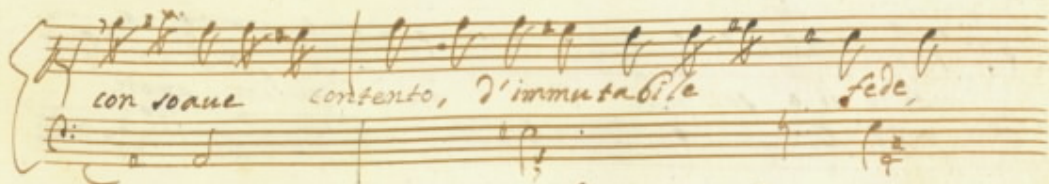
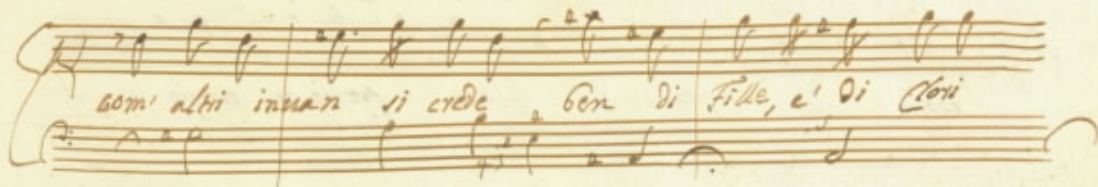
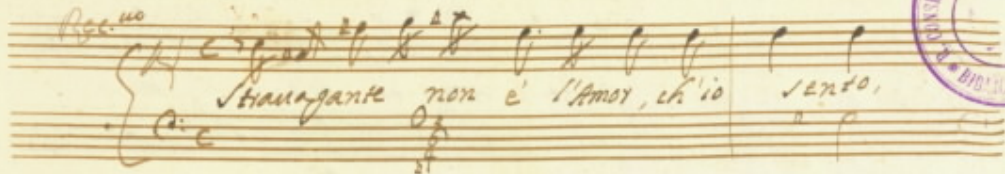


Incompleta (mancano tre pagine) 79
74

Cantata 12

Del Sig. Cavaliere Alessandro Scarlatti

Rec. 100



il bel volto di Cori illustra il giorno

di Fide il guardo presta i raggi al sole; del'

Figlio, e della Noia il bel colore perde ogni pregio, se ri-

parti in verno son delle belle ove è il giardin d'amore

Ambe care mi sono, e d'ambe amante

petto chi non ama chi l'adora e chi siegue

chi lo fugge onde ha duob pe - na e mar =

ti pe

na pe - na e mar =

ti.

Ma ugan - te ha il Cois in petto

chi non ama chi l'adora c' chi siegue

chi lo fugge onde ha Duol pena' mara'

tir pe

na pe =

na e' martir. onde ha Duol pena

na

e' martir pe - na pena e' martir.

De! mio

Or il doppio affanno fide stimo e lo-
 ri ono - ra egual fiamma il cor ne stuy-
 ge e in Amoy ci fa gioir e in Amoy ci
 fa gioir. e in Amoy ci fa

Musical notation includes treble and bass clefs, a key signature of one flat (B-flat), and a 2/4 time signature. The score features various note values (quarter, eighth, sixteenth notes), rests, and dynamic markings such as 'p' (piano) and 'f' (forte). There are also some numerical annotations like '43' and '73' near specific notes.

Handwritten musical notation on two staves. The top staff begins with a treble clef and a key signature of two sharps (F# and C#). The notes are: a quarter note F#, a quarter note A, a quarter note G, and a half note F#. The bottom staff begins with a bass clef and contains two whole notes: an F# and an A. The lyrics "fa" and "gior." are written below the notes in the first measure.

Seven empty musical staves on the page.

