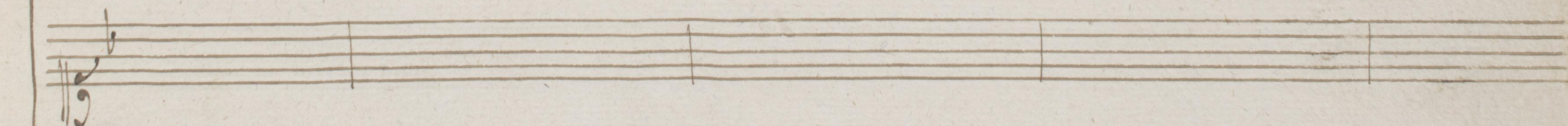
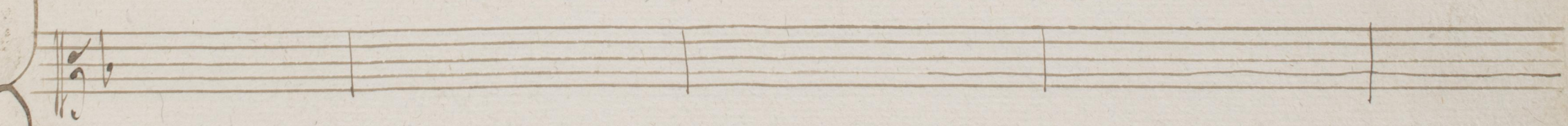
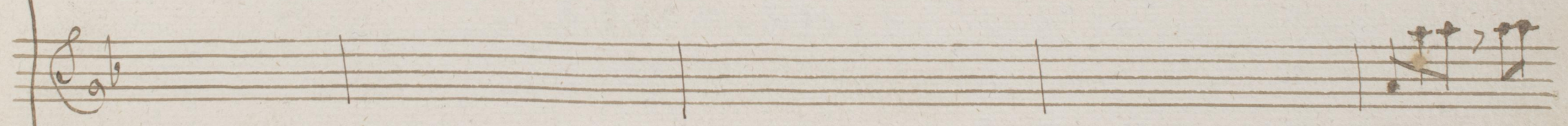
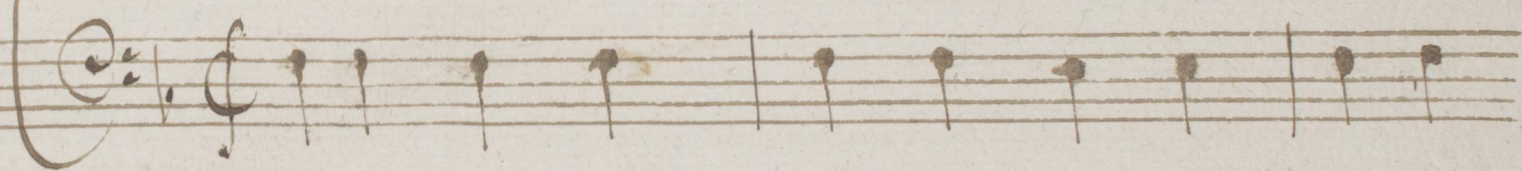
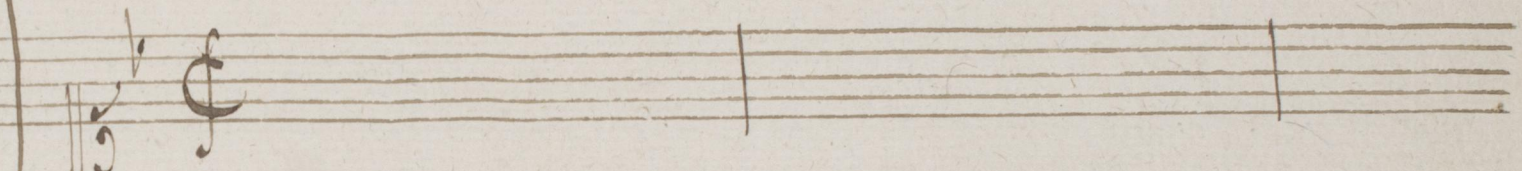
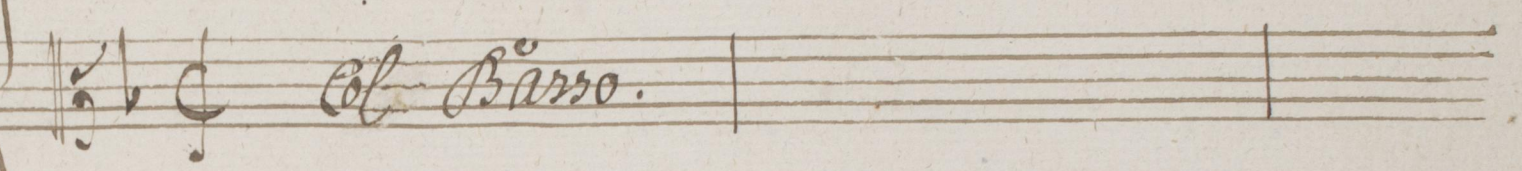
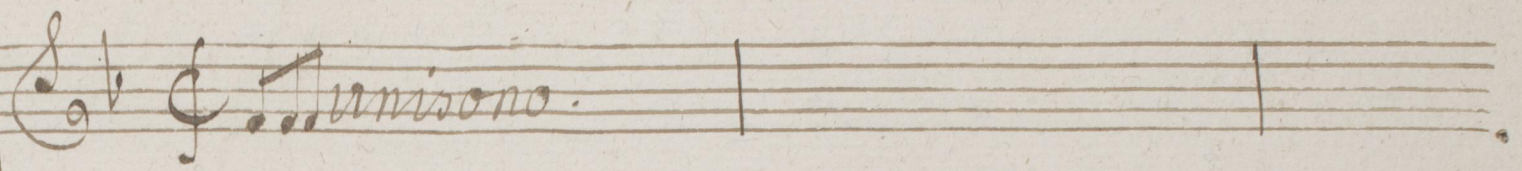
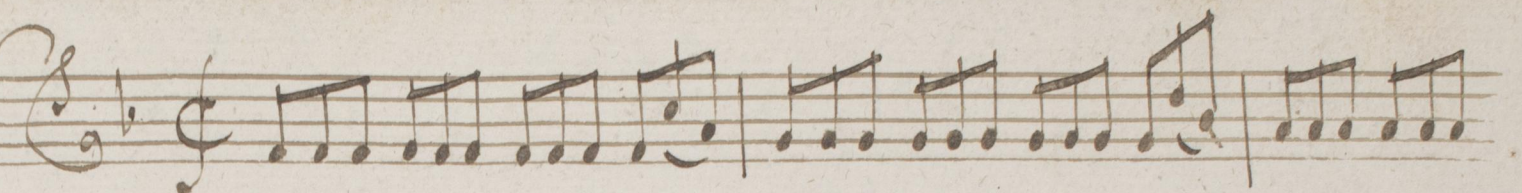
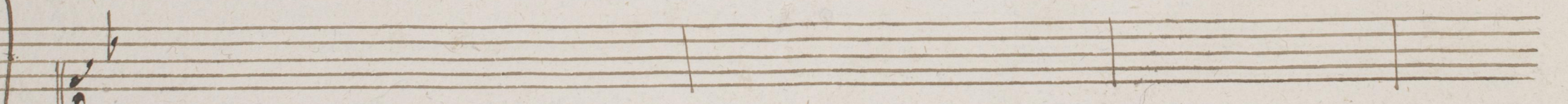
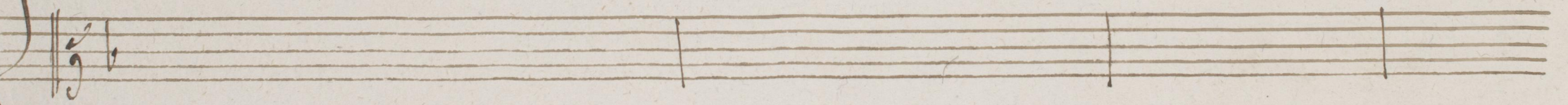
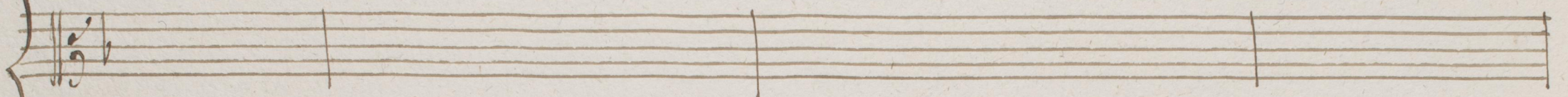


N.º 50

Aria del
Signore
Bernasconi
Con Sordini

Andante.





Handwritten musical notation on a single staff, featuring a treble clef and a key signature of one flat. The notation includes a series of eighth notes, followed by a measure with a fermata and the word "tu" written above it. The staff concludes with a whole note.

Handwritten musical notation on a single staff, featuring a treble clef. The word "vni." is written across the first measure. The staff concludes with a whole note.

Handwritten musical notation on a single staff, featuring a treble clef. The staff is mostly empty, with only a few notes visible at the beginning.

Handwritten musical notation on a single staff, featuring a treble clef. The staff is mostly empty, with only a few notes visible at the beginning.

Handwritten musical notation on a single staff, featuring a treble clef. The word "Parto" is written across the middle of the staff. The notation includes several notes and rests.

Handwritten musical notation on a single staff, featuring a treble clef. The notation consists of a continuous sequence of eighth notes, some beamed together.

Handwritten musical notation on a single staff, featuring a treble clef. The word "vni." is written across the first measure. The staff concludes with a whole note.

Handwritten musical notation on a single staff, featuring a treble clef. The staff is mostly empty, with only a few notes visible at the beginning.

Handwritten musical notation on a single staff, featuring a treble clef. The word "Parto" is written across the first measure, followed by "ti", "Lascio", and "ca = = ra" across subsequent measures. The notation includes notes and rests.

Handwritten musical notation on a single staff, featuring a treble clef. The notation consists of a series of eighth notes.

Handwritten musical score for the first system. It consists of five staves. The top two staves are for the vocal line, and the bottom three are for the piano accompaniment. The lyrics are written in cursive below the vocal line.

Ma nel partir io sento Trop = = = po crudel tor =

Handwritten musical score for the second system. It consists of five staves. The top two staves are for the vocal line, and the bottom three are for the piano accompaniment. The lyrics are written in cursive below the vocal line.

mento trop = = = po crudel tormento non sarà

Handwritten musical score for the first system. It consists of five staves. The top two staves are for the vocal line, and the bottom three are for the piano accompaniment. The lyrics are written below the vocal line.

Tanto ama = ra La = = = pe = = na del mo = = lir

Handwritten musical score for the second system. It consists of five staves. The top two staves are for the vocal line, and the bottom three are for the piano accompaniment. The lyrics are written below the vocal line.

non Sara' Tanto ama = = = = =

A handwritten musical score on aged paper, featuring multiple staves of music. The score is organized into three systems, each with a grand staff (treble and bass clefs) and a single bass clef staff. The first system consists of five staves. The second system consists of four staves. The third system consists of four staves. The lyrics "ra" and "La' = = pen = na" are written below the notes in the third system. The music includes various note values, rests, and dynamic markings such as *ff* and *f*. There are some stains on the paper, particularly in the middle and right sections.

ra

La' = = pen = na

Two staves of handwritten musical notation in treble clef. The first staff contains a series of eighth notes, and the second staff contains a series of sixteenth notes, both spanning across several measures.

Musical notation for a vocal line in treble clef. The lyrics are "Del = mo = = rir La = = pen = na". The notes are written in a cursive, handwritten style, with some notes being beamed together.

Two staves of handwritten musical notation in treble clef. The first staff contains a series of eighth notes, and the second staff contains a series of sixteenth notes, both spanning across several measures.

Musical notation for a vocal line in treble clef. The lyrics are "Del = = mo = = rir La pe = = na Del = = = mo = =". The notes are written in a cursive, handwritten style, with some notes being beamed together.

Handwritten musical score for the first system. It consists of five staves. The top staff is a vocal line with a treble clef and a key signature of one flat. It contains several measures of music with various note values and rests. The second staff is a vocal line with a treble clef, starting with the word "vivo." in cursive. The third and fourth staves are piano accompaniment, with the fourth staff starting with the word "vivo" in cursive. The fifth staff is a bass line with a bass clef. The system concludes with a fermata over a note in the top staff.

Handwritten musical score for the second system. It consists of five staves. The top two staves are vocal lines with treble clefs. The bottom three staves are piano accompaniment, with the middle staff starting with the words "Presto Ti Lascio Ti" in cursive. The system concludes with a fermata over a note in the top staff.

Handwritten musical score for the first system. It consists of five staves. The top two staves are vocal lines in treble clef. The bottom three staves are piano accompaniment in bass clef. The lyrics are written in the bass clef staff.

La = = = scioo' Cara *Ma' nel partir io*

Handwritten musical score for the second system. It consists of five staves. The top two staves are vocal lines in treble clef. The bottom three staves are piano accompaniment in bass clef. The lyrics are written in the bass clef staff.

Sen-to Trop = = = = po crudel tormento

non Sara Tanto ama = = = = =

ra La = = pe = = na Del = = mo =

rir , La = = pe = = na Del = = mo =

rir La pe-na del-mo-ri-r

Senza Sordini.

La pena del-mo-ri-r

Handwritten musical score for the first system, featuring two staves with treble clefs and two staves with bass clefs. The notation includes complex rhythmic patterns and chordal structures. A '9' with a 't' above it is written above the second staff.

Handwritten musical score for the second system, including vocal lines and piano accompaniment. The lyrics "Perfide Belle in-grate Se non vo-lete ok" are written in cursive. The tempo "Presto" is indicated at the bottom left.

Sio a = = ver di me pie = = tate non

date al Idol = = mio Si barba = = ro mar =

Handwritten musical score for the first system. It consists of five staves. The top two staves are for the vocal line, and the bottom three are for piano accompaniment. The lyrics are: *tir no' no' si barba = ro Martir*. There are two fermatas above the notes for *si* and *barba = ro*. A *rit.* marking is present above the piano accompaniment staff.

Handwritten musical score for the second system. It consists of five staves. The top two staves are for the vocal line, and the bottom three are for piano accompaniment. The lyrics are: *si barba = ro Mar = tir si barba = = = ro*. There are two fermatas above the notes for *si* and *barba = = = ro*. A *rit.* marking is present above the piano accompaniment staff.

Handwritten musical score for five staves. The first four staves are grouped by a brace on the left. The first staff has a treble clef and a key signature of one flat. The second staff has a treble clef and a key signature of one flat. The third staff has a bass clef and a key signature of one flat. The fourth staff has a bass clef and a key signature of one flat, with the handwritten text "Mar-tir." written below it. The fifth staff has a bass clef and a key signature of one flat. Each staff contains musical notation including notes, rests, and a final cadence symbol.

Seven empty musical staves, each consisting of five horizontal lines, arranged vertically on the page.