

Musical score system 1, measures 1-4. The system consists of five staves. The top four staves are vocal staves, each with a treble clef, a key signature of three sharps (F#, C#, G#), and a common time signature (C). All four vocal staves contain whole rests for the first four measures. The fifth staff is a grand staff (treble and bass clefs) with a common time signature (C). It contains a melodic line in the treble clef and a bass line in the bass clef. The melodic line features a half note G#4, followed by quarter notes A4, B4, and C5, then a half note B4, followed by quarter notes A4, G#4, and F#4. The bass line features a half note G#3, followed by quarter notes A3, B3, and C4, then a half note B3, followed by quarter notes A3, G#3, and F#3. The system concludes with a repeat sign.

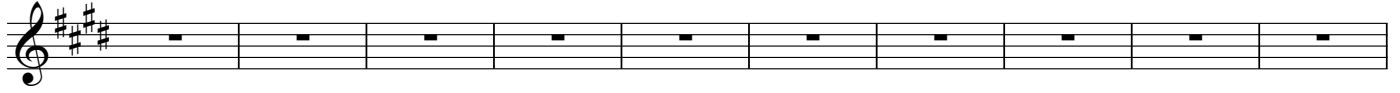
5

Musical score system 2, measures 5-11. The system consists of five staves. The top four staves are vocal staves, each with a treble clef, a key signature of three sharps (F#, C#, G#), and a common time signature (C). All four vocal staves contain whole rests for measures 5-11. The fifth staff is a grand staff (treble and bass clefs) with a common time signature (C). It contains a melodic line in the treble clef and a bass line in the bass clef. The melodic line features a half note G#4, followed by quarter notes A4, B4, and C5, then a half note B4, followed by quarter notes A4, G#4, and F#4. The bass line features a half note G#3, followed by quarter notes A3, B3, and C4, then a half note B3, followed by quarter notes A3, G#3, and F#3. The system concludes with a repeat sign.

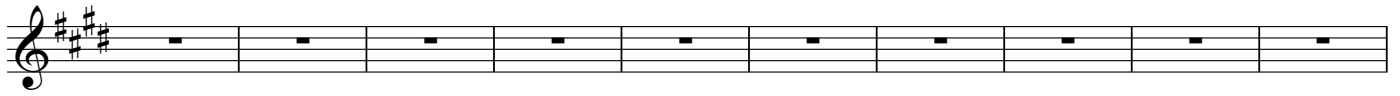
12

Musical score system 3, measures 12-19. The system consists of a single staff with a treble clef, a key signature of three sharps (F#, C#, G#), and a common time signature (C). The staff contains whole rests for measures 12-19.

22



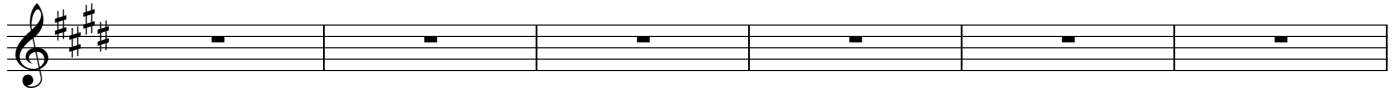
32



42



52



58

