

D'esser felice un di si spera

spera





si si spera un di d'esser fe-lice spera spe=



Handwritten musical notation for the first system. The top staff is a vocal line with lyrics: "= va si' si' si' si' spera un di - d'esser fe:". The bottom staff is a bass line. The music is written in a single system with a treble clef and a common time signature.

Handwritten musical notation for the second system. The top staff continues the vocal line with lyrics: "- lice spera spe: - va". The bottom staff continues the bass line. The music is written in a single system with a treble clef and a common time signature.



Handwritten musical notation for the first system. The top staff is a vocal line with a treble clef and a key signature of one flat. The bottom staff is a basso continuo line with a bass clef and a key signature of one flat. The lyrics are written between the staves.

ch' amor per te così non sarà erudo ogn' or

Handwritten musical notation for the second system. The top staff is a vocal line with a treble clef and a key signature of one flat. The bottom staff is a basso continuo line with a bass clef and a key signature of one flat. The lyrics are written between the staves.



*e la tua stella ancor risplenderà più bella, e meno al-*

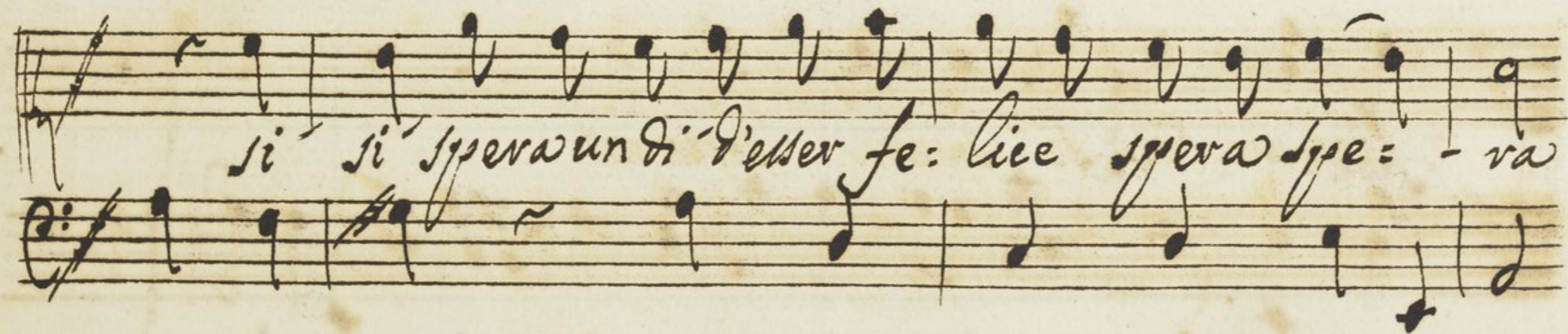
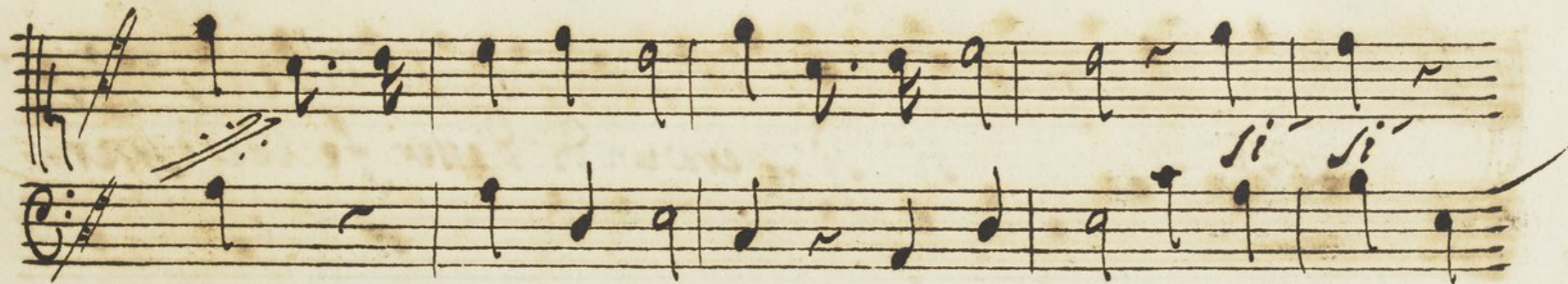
*= vera risplenderà più bella, e meno albe = = ra*



*D'esser fe:*

*lice un di' si' spera spera*







Handwritten musical notation for the first system. The treble staff contains a melodic line with various note values and rests. The bass staff contains a corresponding bass line. The lyrics are written in a cursive hand between the staves: *si' si' si' si' spera un di d'esser felice spera'*. The paper shows signs of age and staining.

Handwritten musical notation for the second system. The treble staff contains a melodic line with various note values and rests. The bass staff contains a corresponding bass line. The lyrics are written in a cursive hand between the staves: *spe = ra*. The paper shows signs of age and staining.